



18 Horley Road.

Redhill

Guide Price **£450,000**



Presenting an immaculately presented and stylish three double bedroom semi detached family home, this property seamlessly blends original features with contemporary design to create a truly inviting living space. The heart of the home is a beautiful dual aspect lounge, complete with a charming wood burner, which offers a warm and welcoming atmosphere for relaxing or entertaining guests. The spacious dining room features a striking fireplace and a thoughtfully designed under stairs work space, perfect for those who work from home or require additional storage. The impressive kitchen is flooded with natural light thanks to its vaulted ceiling and is equipped with integrated appliances, dual ovens, and a sleek quartz worktop, making it a delight for any culinary enthusiast. Completing the ground floor is a stunning bathroom, finished to a high standard. Upstairs, the property continues to impress with three generously proportioned double bedrooms. The master suite, created from a recent loft conversion, benefits from an adjoining wetroom, offering a luxurious and private retreat. Throughout the house, original character details are complemented by modern updates, providing the perfect balance of comfort and style. The location is exceptionally convenient, being only a short walk from Earlswood Lakes and within easy reach of local amenities, the train station, and East Surrey Hospital. Residents will also appreciate the proximity to the bustling towns of Redhill and Horley, both of which offer a fantastic range of shops, cafes, and leisure facilities. Excellent transport links are available nearby, with fast train services to London from both mainline stations, making this an ideal location for commuters. Whether you are seeking a family home with space to grow or a property that offers a blend of period charm and modern living, this house is sure to exceed expectations. Early viewing is highly recommended to fully appreciate the quality and versatility of accommodation on offer.

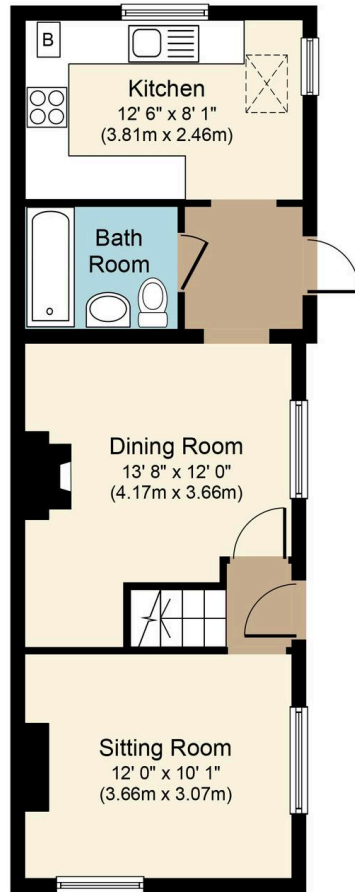
Council Tax band: D

Tenure: Freehold

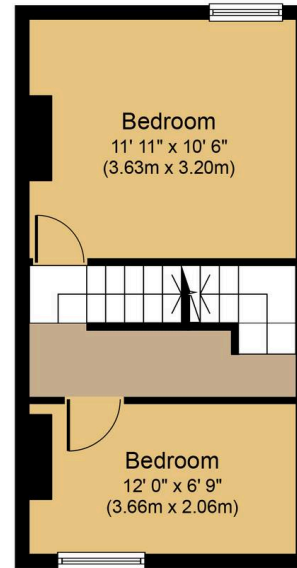
- A Stunning And Stylish Three Double Bedroom Family Home



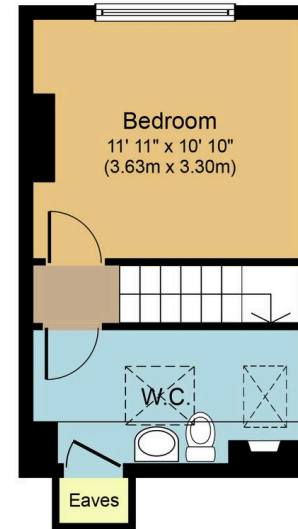




Ground Floor
Approximate Floor Area
470 sq. ft.
(43.7 sq. m.)



First Floor
Approximate Floor Area
288 sq. ft.
(26.8 sq. m.)



Second Floor
Approximate Floor Area
240 sq. ft.
(22.3 sq. m.)

Horley Road, RH1



Approx. Gross Internal Floor Area 999 sq. ft. (92.8 sq. m.)

Whilst every attempt has been made to ensure the accuracy of the floor plan contained here, measurements of doors, windows, rooms and any other items are approximate and no responsibility is taken for any error, omission, or mis-statement. This plan is for illustrative purposes only and should be used as such by any prospective purchaser or tenant. The services, systems and appliances shown have not been tested and no guarantee as to their operability or efficiency can be given.