



2 Woodcrest Walk.

Reigate

Guide Price £500,000



This stunning three bedroom end-of-terrace family home is beautifully presented by the current owners, offering stylish and contemporary accommodation that is perfect for those seeking a move-in ready property. Upon entering, you are greeted by a bright and spacious hallway that sets the tone for the rest of the house. The modern open plan kitchen diner is a true highlight, featuring sleek cabinetry, integrated appliances, and ample space for both cooking and entertaining. Flowing seamlessly from the kitchen, the conservatory provides a versatile space that can be adapted to suit your lifestyle, whether you envision it as a family room, playroom, or a tranquil spot to unwind and enjoy the outlook. Upstairs, the first floor comprises three well-proportioned bedrooms, with the master bedroom positioned at the front of the house and the second double bedroom to the rear, both benefitting from fitted wardrobes for convenient storage. The third bedroom provides a flexible option for a nursery, home office, or guest room. The property sits on a generous double width plot, offering excellent scope to extend to the side (subject to the necessary consents) and further enhance the already impressive living space. Additional features include a garage en-bloc and the potential for off road parking for several cars, providing practical solutions for families and commuters alike with Redhill station being a comfortable walk away offering trains to London in around 35 minutes. Reigate town centre is also within walking distance with its wide range and shops, cafes and restaurants. Gatton park and Wray Common are also within a 10 minute walk. The home is finished to a high standard throughout, with thoughtful touches and a cohesive design that creates a welcoming and comfortable environment. With its versatile layout, modern finishes, and potential to grow with your needs, this fabulous three bedroom home represents an exceptional opportunity to secure a property that combines immediate comfort with future possibilities. Early viewing is highly recommended to fully appreciate all that this wonderful home has to offer.

Council Tax band: D.. Tenure: Freehold

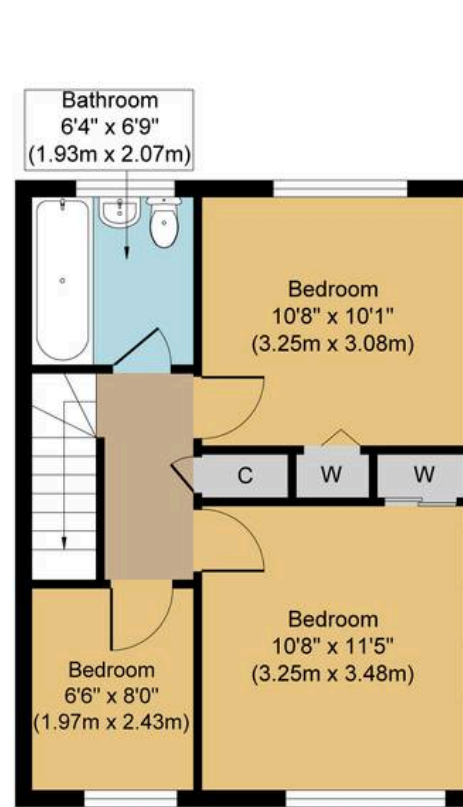
- Stunning Three Bedroom End-of-terrace Family Home







Ground Floor
Approximate Floor Area
624 sq. ft
(57.99 sq. m)



First Floor
Approximate Floor Area
420 sq. ft
(39.01 sq. m)



Woodcrest Walk, RH1
Approx. Gross Internal Floor Area 1044 sq. ft / 97.00 sq. m



Whilst every attempt has been made to ensure the accuracy of the floor plan contained here, measurements of doors, windows, rooms and any other items are approximate and no responsibility is taken for any error, omission, or mis-statement. The measurements should not be relied upon for valuation, transaction and/or funding purposes. This plan is for illustrative purposes only and should be used as such by any prospective purchaser or tenant. The services, systems and appliances shown have not been tested and no guarantee as to their operability or efficiency can be given.