



1 Mostyn Terrace.

Redhill

Guide Price **£450,000**



This immaculately presented three bedroom mid-terraced house offers an inviting and contemporary living environment, ideally situated just 0.6 miles from Earlswood Train Station, 0.7 miles from Redhill Train Station (both are just a 10-15 minute walk away) and within easy reach of Redhill town center, Nutfield, and a range of charming local villages.

This beautiful home is filled with natural light, enhancing the sense of space and comfort throughout. The ground floor features a welcoming entrance hall that leads to a spacious, separate living room, perfect for relaxing or entertaining guests. The modern kitchen/diner is a standout feature, boasting stylish bifolding doors that open seamlessly to the landscaped rear garden, creating a perfect setting for family meals or gatherings. The kitchen is thoughtfully designed to cater to the needs of contemporary living, offering ample storage and workspace.

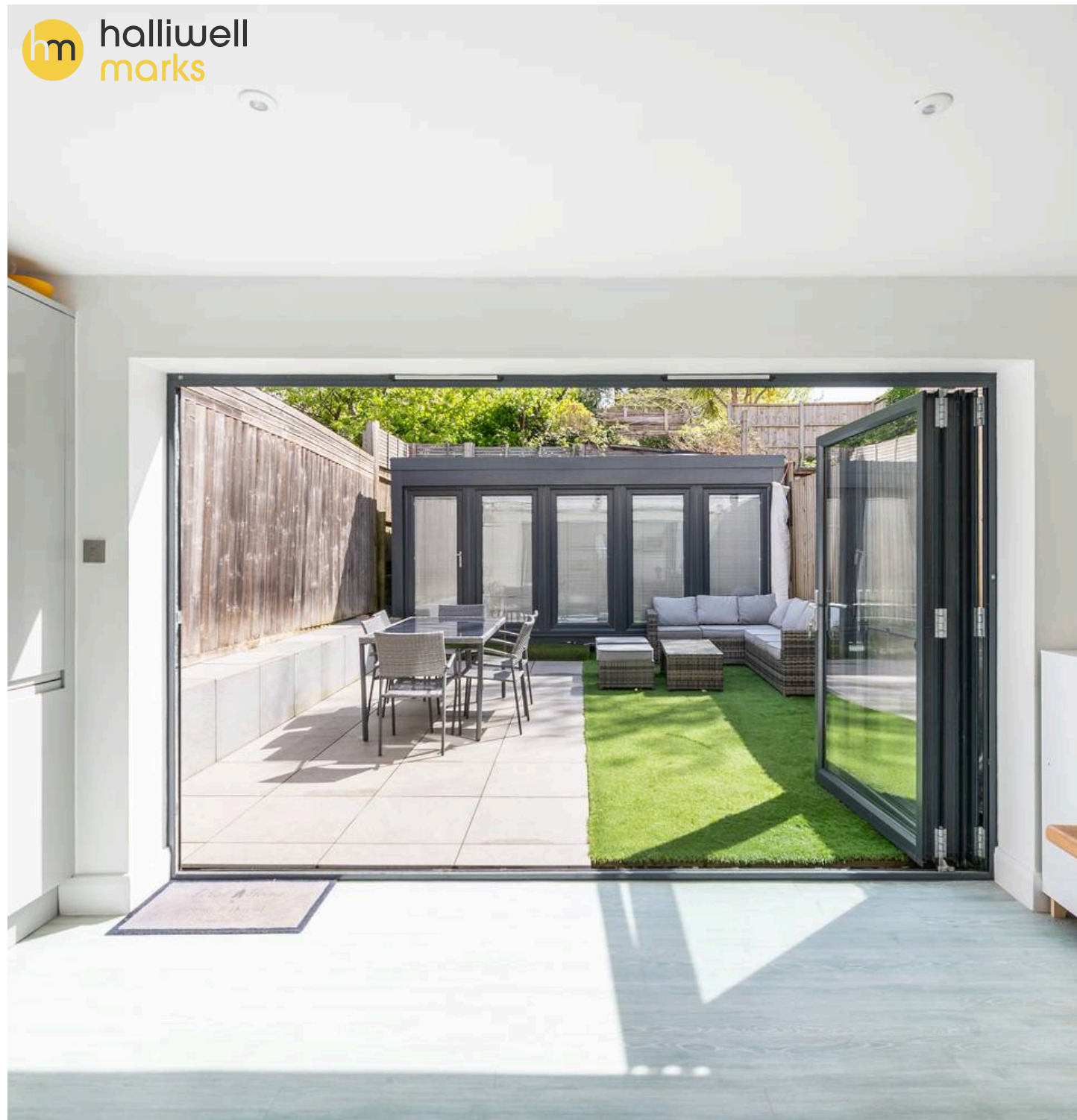
Upstairs, you will find three well-proportioned bedrooms, each providing a peaceful retreat for family members or guests. The recently renovated bathroom is finished to a high standard and features both a separate bath and a walk-in shower, ensuring practicality and comfort for busy mornings or relaxing evenings.

The property also benefits from a versatile outbuilding, complete with its own WC, offering endless possibilities as a home office, gym, studio, or additional storage space to suit your lifestyle needs. With a nearby convenience store and excellent transport links, this location is ideal for commuters and families alike, providing easy access to local amenities and the wider area. One other notable feature is a portion of land to the rear of the garden which could serve a multitude of purposes. Whether you are looking for a stylish family home or a property with flexible living options, this beautifully maintained house in Earlswood offers a rare opportunity to secure a home that combines comfort, convenience, and contemporary style in a sought-after location.

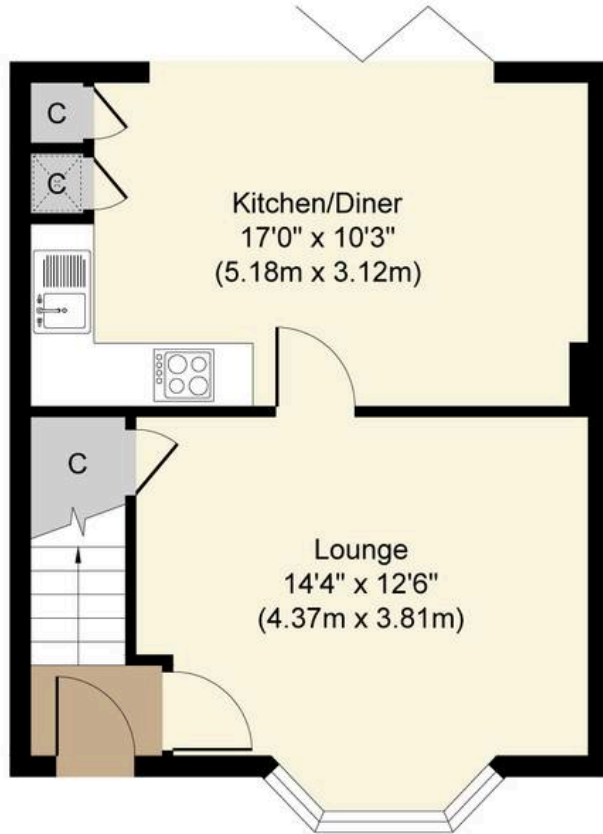
Council Tax band: C

Tenure: Freehold

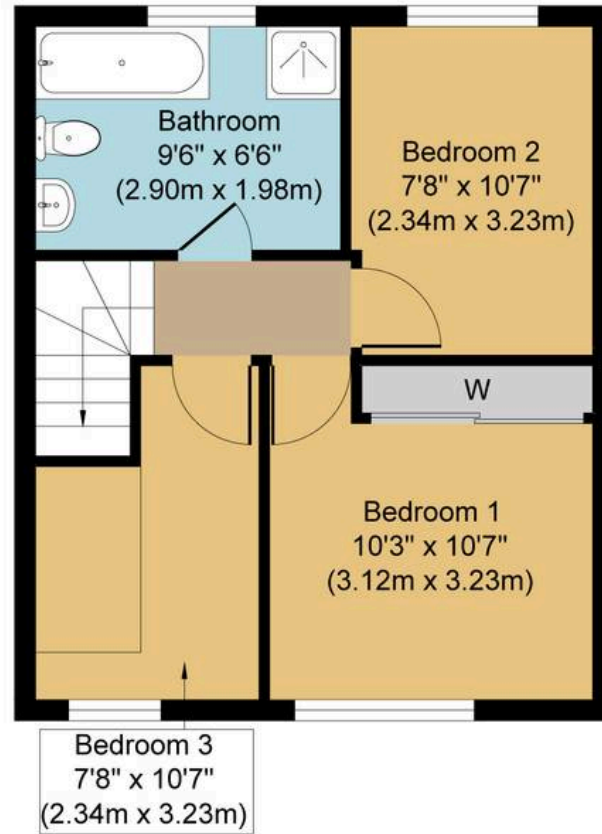
- Beautiful Three Bedroom Terrace Family Home
- Great transport links - located just 0.7 miles from



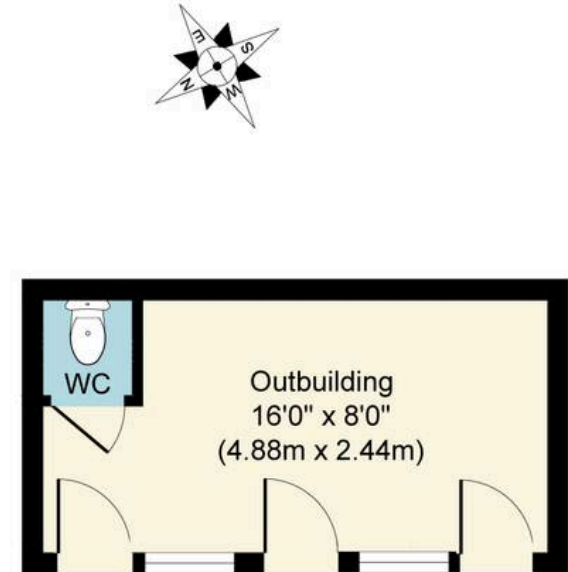




Ground Floor
Approximate Floor Area
386 sq. ft
(35.86 sq. m)



First Floor
Approximate Floor Area
377 sq. ft
(35.02 sq. m)



Outbuilding
Approximate Floor Area
128 sq. ft
(11.89 sq. m)

Mostyn Terrace, RH1
Approx. Gross Internal Floor Area 763 sq. ft / 70.88 sq. m
Outbuilding Floor Area 128 sq. ft / 11.89 sq. m



Whilst every attempt has been made to ensure the accuracy of the floor plan contained here, measurements of doors, windows, rooms and any other items are approximate and no responsibility is taken for any error, omission, or mis-statement. The measurements should not be relied upon for valuation, transaction and/or funding purposes. This plan is for illustrative purposes only and should be used as such by any prospective purchaser or tenant. The services, systems and appliances shown have not been tested and no guarantee as to their operability or efficiency can be given.