

Rex Gooding



90 Woolmer Road, Nottingham, NG2 2FD

Guide Price: £225,000

90 Woolmer Road, Nottingham, NG2 2FD

This beautifully presented Victorian terraced house seamlessly blends period charm with contemporary comfort, creating an ideal home for discerning first-time buyers. The property showcases original features including captivating open fireplaces alongside thoughtful modern updates such as stylish new flooring throughout.

Situated in one of the area's most sought-after locations, this delightful home offers exceptional connectivity with the train station, scenic embankment, and vibrant Nottingham City Centre all within comfortable walking distance.

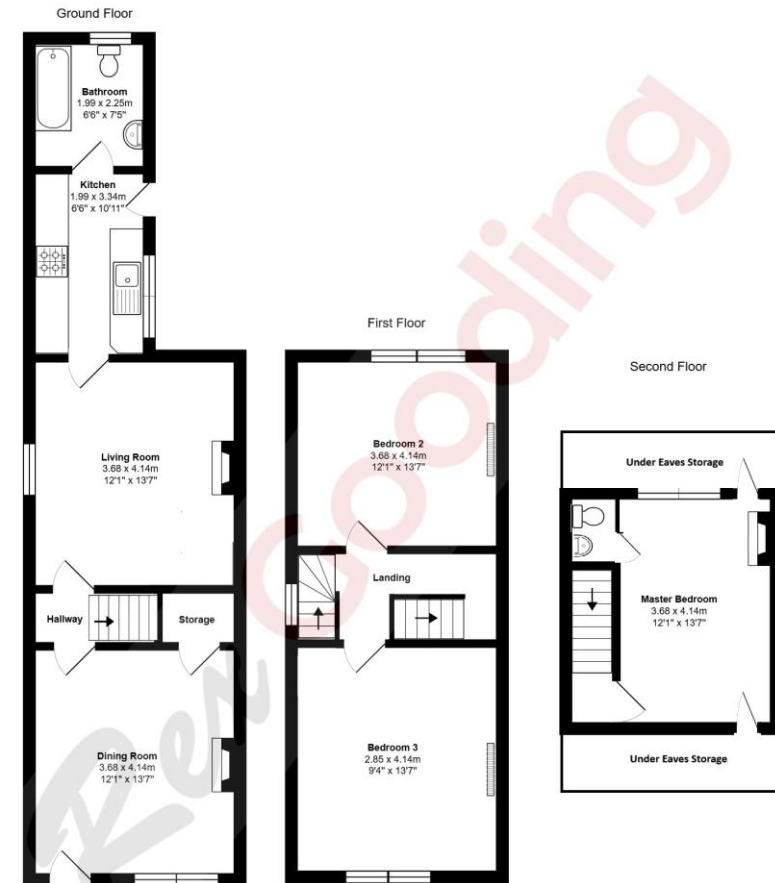
The ground floor accommodation comprises two generously proportioned reception rooms, each featuring beautiful fireplaces and abundant natural light, alongside a contemporary fitted kitchen with integrated appliances and a modern three-piece bathroom suite. The well-designed kitchen provides ample storage and workspace, with convenient access to the rear garden.

The first floor offers two excellent double bedrooms with fitted storage, while the impressive master bedroom on the second floor spans over 230 square feet and features an original fireplace and an en-suite WC with wash basin.

Outside, the property benefits from on-street parking to the front and a delightful low-maintenance rear garden with patio area, ideal for outdoor entertaining without the burden of extensive upkeep.

This exceptional Victorian home represents a rare opportunity to acquire a characterful property with modern convenience in a highly desirable location, perfect for first-time buyers seeking both charm and

90, Woolmer Road, Nottingham, NG2 2FD



Total Area: 96.8 m² ... 1042 ft²

All measurements are approximate and for display purposes only









