



16 Hatfield Drive, West Bridgford, NG2 7SG

Guide Price: £580,000

16 Hatfield Drive, West Bridgford, NG2 7SG

This impressive four-bedroom detached family home sits on a spacious plot, offering excellent potential for extension to the side and rear, subject to planning permission. The generous rear garden is notably larger and more expansive than average, providing a perfect outdoor space for families to enjoy. The property also benefits from gardens to the front, a detached brick-built garage, and driveway parking.

Inside, the accommodation comprises a welcoming entrance hall with a downstairs cloakroom, a bright living room featuring a bay window, a separate dining room, a conservatory, and a kitchen with an adjoining utility room.

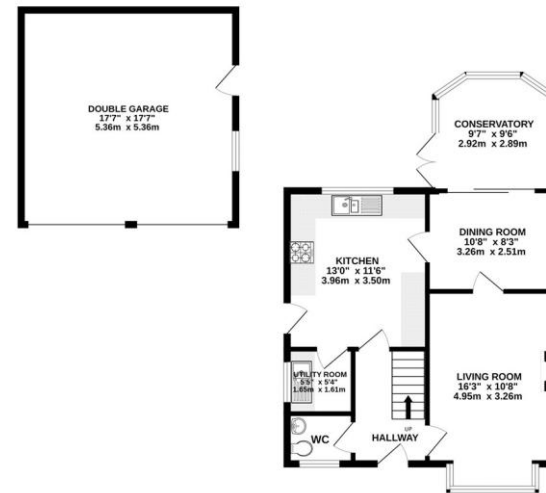
Upstairs, the master bedroom includes an en-suite shower room, while three additional bedrooms are serviced by a family bathroom.

The property is ideally located within the catchment areas for Greythorn Primary School and The West Bridgford School. It also benefits from gas central heating and double glazing throughout, ensuring comfort and energy efficiency.

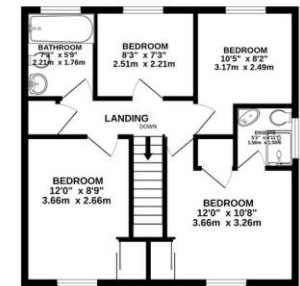
Accommodation & Amenities

- Fabulous Size Plot with Huge Potential
- Popular West Bridgford Location
- Detached Double Garage
- Four Bedrooms & Two Bathrooms
- Three Reception Rooms
- Kitchen with Separate Utility Room
- Downstairs WC
- Large Enclosed Rear Garden
- Within Catchment for the Greythorn Primary & The West Bridgford

GROUND FLOOR
904 sq.ft. (84.0 sq.m.) approx.



1ST FLOOR
497 sq.ft. (46.2 sq.m.) approx.



TOTAL FLOOR AREA: 1401 sq.ft. (130.2 sq.m.) approx.
Whilst every attempt has been made to ensure the accuracy of the floorplans contained herein, measurements of doors, windows, rooms and any other items are approximate and no responsibility is taken for any error, omission or mis-statement. This plan is for illustrative purposes only and should be used as such by any prospective purchaser. The services, systems and appliances shown have not been tested and no guarantee as to their operability or efficiency can be given.
Made with Metapic ©2020.









