



8a Drive Court The Drive, Edgware, HA8 8PP

£1,450 Per Month

Nestled in the desirable area of The Drive, Edgware, this charming flat offers a perfect blend of comfort and convenience. With two well-proportioned bedrooms, this property is ideal for small families, couples, or individuals seeking a peaceful retreat. The flat features a welcoming reception room, providing a lovely space for relaxation or entertaining guests.

The bathroom is thoughtfully designed, ensuring both functionality and style. The layout of the flat maximises space, creating an inviting atmosphere throughout.

Situated in Edgware, residents will benefit from a variety of local amenities, including shops, restaurants, and parks, all within easy reach. The area is well-connected, making commuting to central London straightforward and convenient.

This flat presents an excellent opportunity for those looking to settle in a vibrant community while enjoying the comforts of home. Seeking a rental property, this flat on The Drive is certainly worth considering.

Exterior



Bedroom



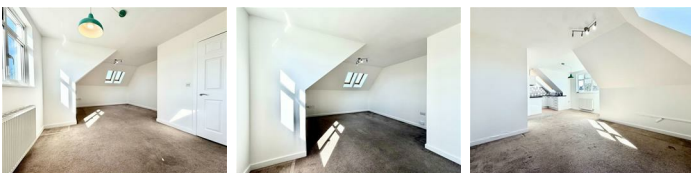
Kitchen



Bathroom



Living Room

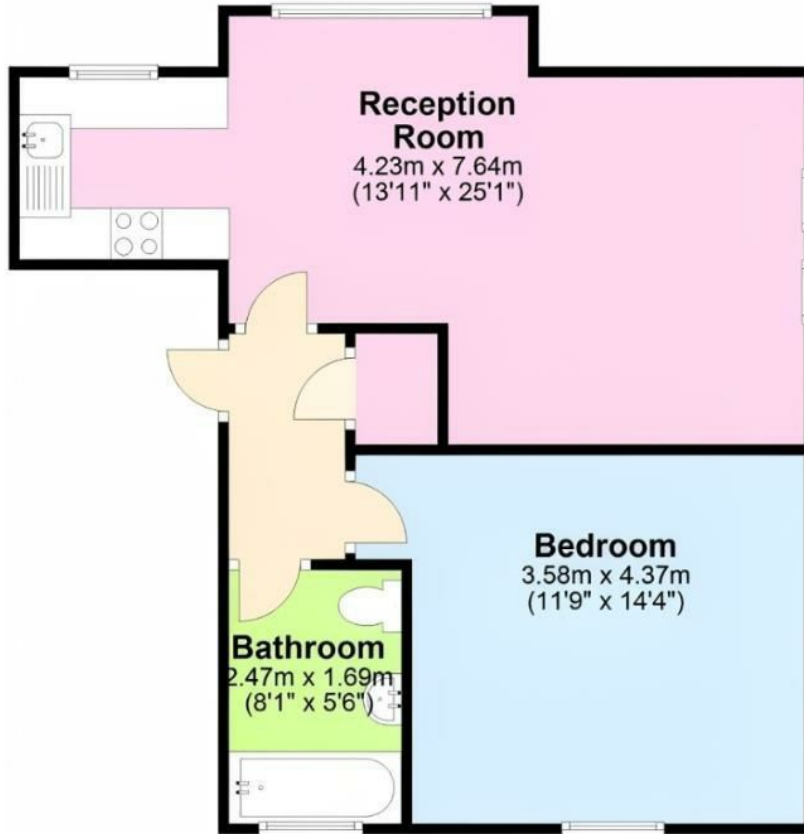


Communal Gardens

Floor Plan

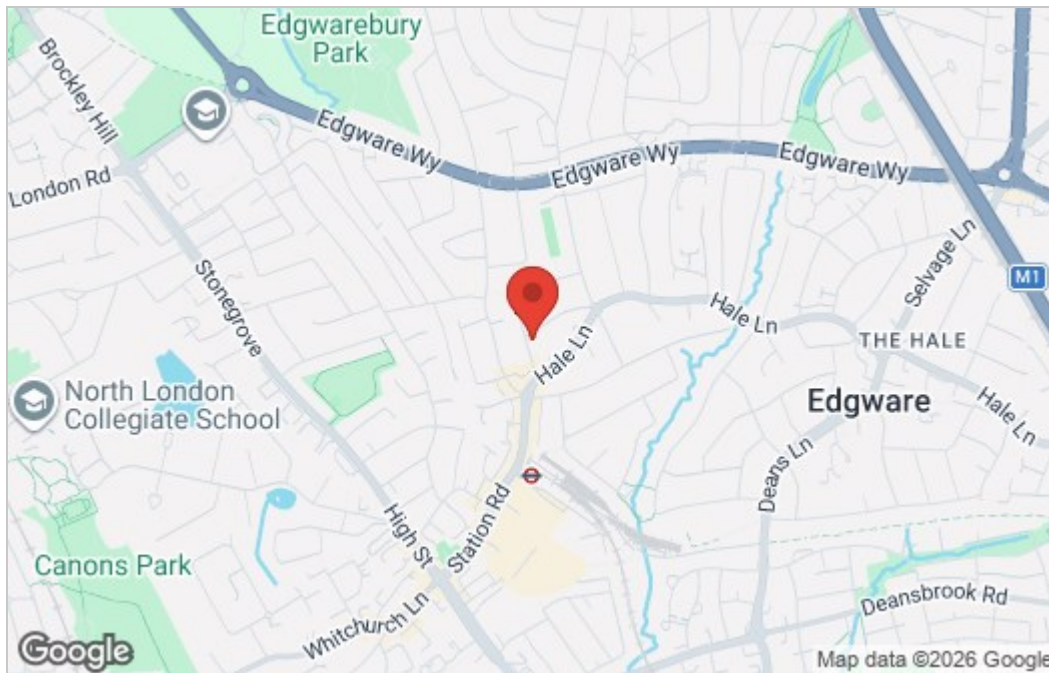
Second Floor

Approx. 46.4 sq. metres (499.5 sq. feet)

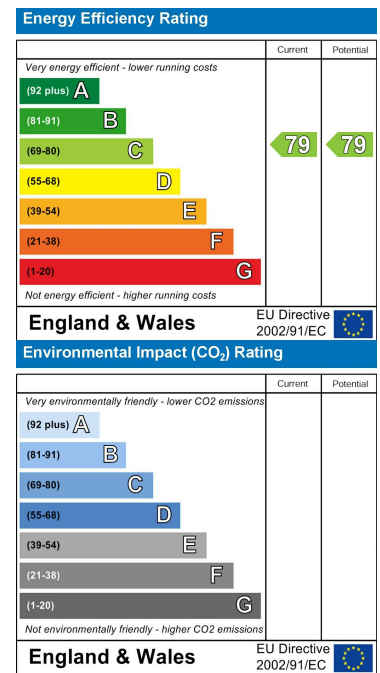


Total area: approx. 46.4 sq. metres (499.5 sq. feet)

Area Map



Energy Efficiency Graph



These particulars, whilst believed to be accurate are set out as a general outline only for guidance and do not constitute any part of an offer or contract. Intending purchasers should not rely on them as statements of representation of fact, but must satisfy themselves by inspection or otherwise as to their accuracy. No person in this firm's employment has the authority to make or give any representation or warranty in respect of the property.



Edgware Office- 194 Station Road, Edgware, HA8 7AT. Tel: 020 8958 1118
Bushey Heath Office- 59 High Road, Bushey, WD23 1EE. Tel: 020 8950 7777
www.benjaminstevens.co.uk