



**BENJAMIN  
STEVENS.**  
estate agents



**Chartridge Close, Bushey WD23 4YF**

**£3,150 PCM**

# Chartridge Close, Bushey WD23 4YF

## Exterior:

## Guest WC:



Low flush WC, hand wash basin, tiled floor and walls.

## Dining Room:

## Kitchen:



Range of wall and base units, electric oven and hob, cooker hood, plumbing for dishwasher, large feature island, speaker system to ceiling, door to garden.

## Utility Room:



Wall and base units, plumbing for washing machine, radiator

## Landing:

## Bedroom One:



Double glazed window to front, fitted wardrobes, radiator, carpet.

## En Suite:



Low flush WC, hand wash basin, tiled walls and floor

## Bedroom Two:



Double glazed window to front, radiator, carpet.

## Bedroom Three:



Double glazed window to rear, fitted wardrobes, radiator, carpet

## Bedroom Four:



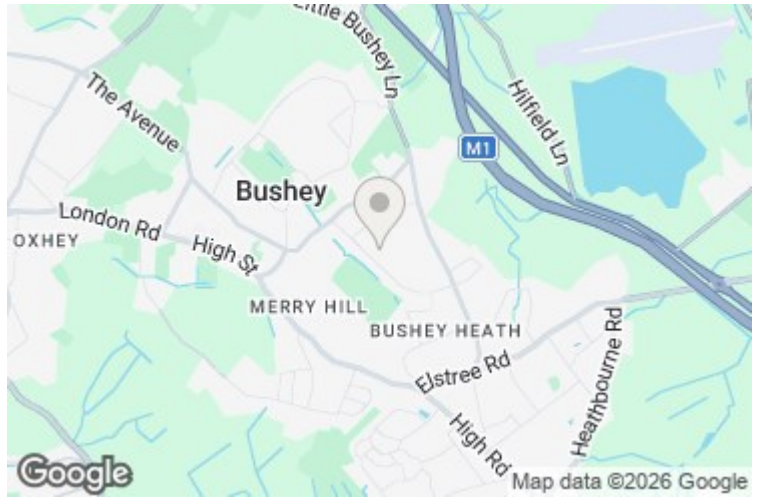
Double glazed window to rear, radiator, carpet.

# Chartridge Close, Bushey WD23 4YF

## Bathroom:



Double glazed window to side, low flush WC, hand wash basin, tiled walls



## Garden:



## Disclaimer:

While every care and effort has been made to ensure these details are correct their accuracy cannot be guaranteed and so should not form part of any contract.

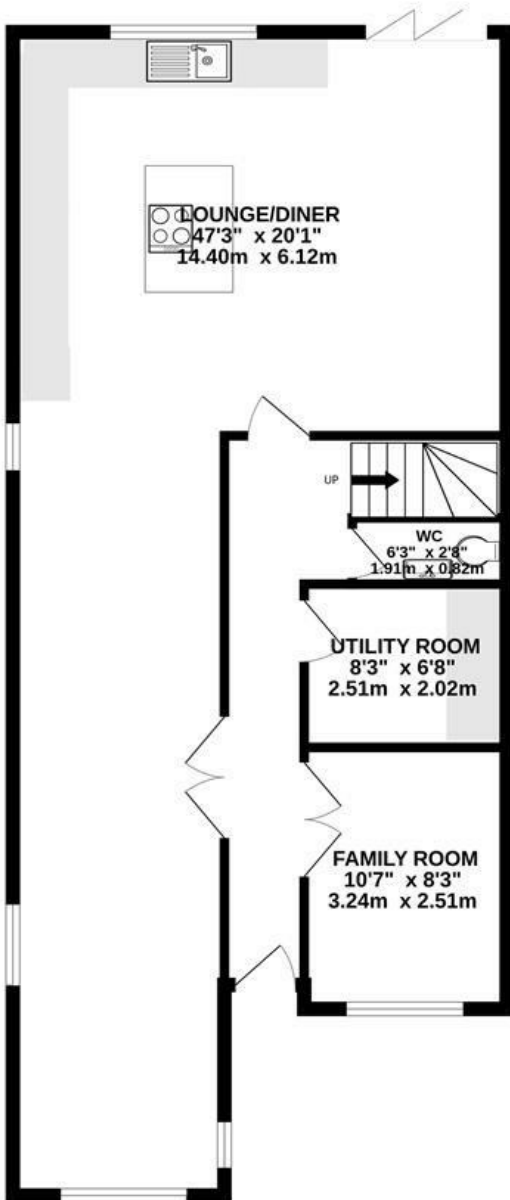
## Living/Dining Room



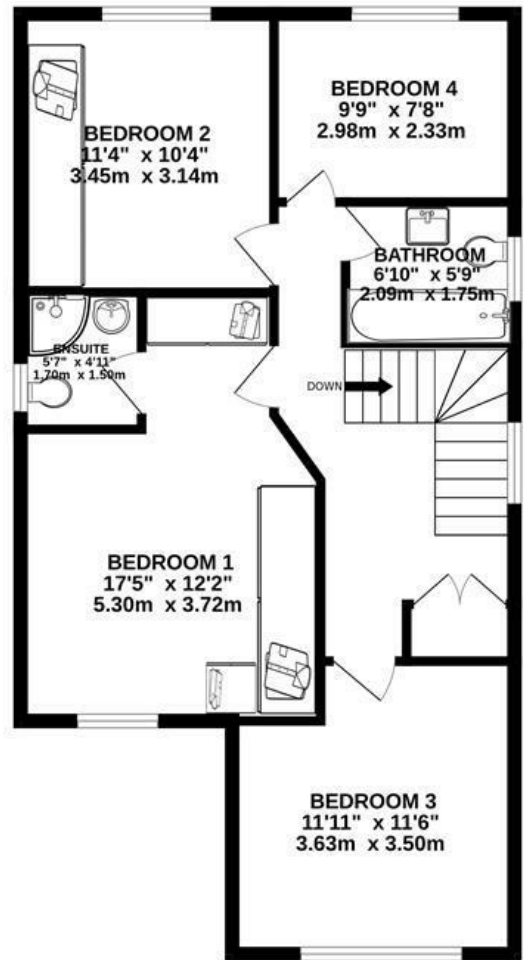
## Kitchen/Diner



GROUND FLOOR  
858 sq.ft. (79.7 sq.m.) approx.



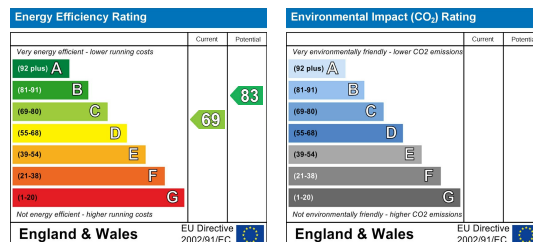
1ST FLOOR  
685 sq.ft. (63.6 sq.m.) approx.



TOTAL FLOOR AREA : 1543 sq.ft. (143.3 sq.m.) approx.

Whilst every attempt has been made to ensure the accuracy of the floorplan contained here, measurements of doors, windows, rooms and any other items are approximate and no responsibility is taken for any error, omission or mis-statement. This plan is for illustrative purposes only and should be used as such by any prospective purchaser. The services, systems and appliances shown have not been tested and no guarantee as to their operability or efficiency can be given.

Made with Metropix ©2025



Edgware Office- 194 Station Road, Edgware, HA8 7AT. Tel: 020 8958 1118  
 Bushey Heath Office- 59 High Road, Bushey, WD23 1EE. Tel: 020 8950 7777  
[www.benjaminstevens.co.uk](http://www.benjaminstevens.co.uk)