



**BENJAMIN  
STEVENS.**  
estate agents



## Walton Road, Bushey WD23 2FE

**£1,700 PCM**

Benjamin Stevens are pleased to offer this Ground Floor floor Two Bedroom Flat to the rental market.

Located on the new development on Walton Road and within a mile of the shopping and transport facilities in Bushey and Watford. Accommodation offers open-plan modern fitted kitchen/lounge, two bedrooms and two bathrooms (one ensuite). Further benefits are allocated parking, communal gardens, double glazing and gas central heating.

To arrange a viewing please call 020 3271 0111

## Walton Road, Bushey WD23 2FE

**Lounge/Diner**

**Bedroom One**



**Bedroom Two**

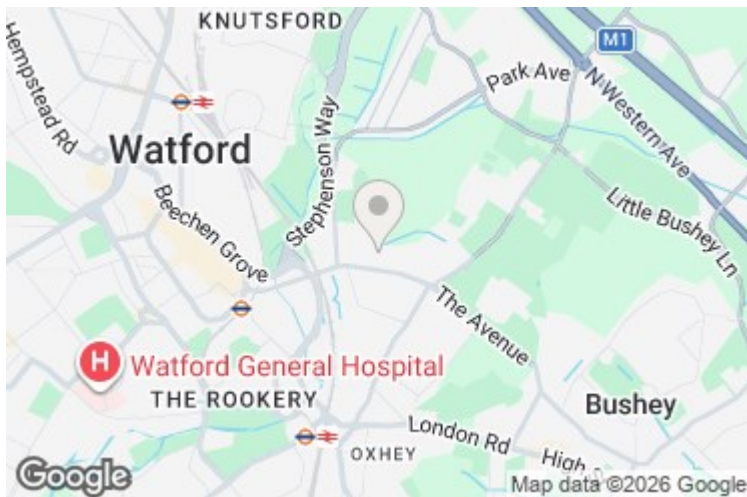


**Bathroom**

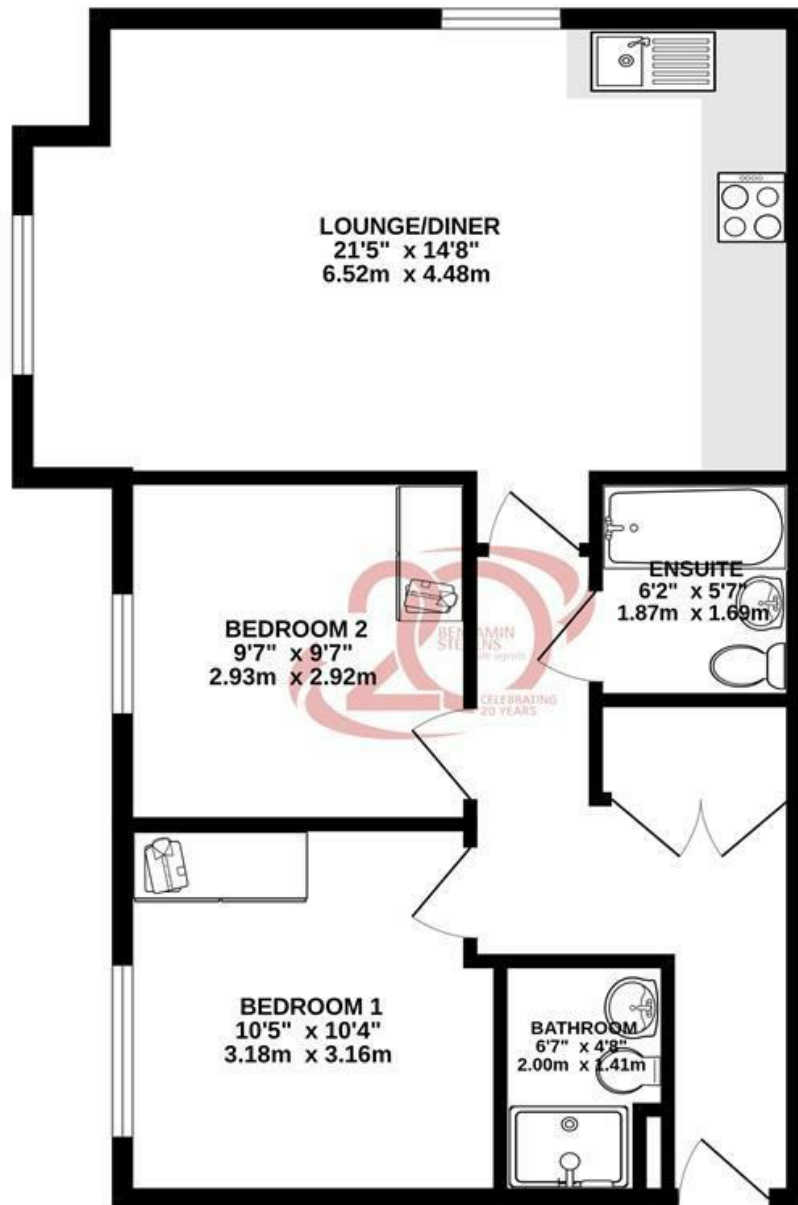
**Ensuite**

**Front Exterior**

**Kitchen**



GROUND FLOOR  
636 sq.ft. (59.1 sq.m.) approx.



TOTAL FLOOR AREA : 636 sq.ft. (59.1 sq.m.) approx.

Whilst every attempt has been made to ensure the accuracy of the floorplan contained here, measurements of doors, windows, rooms and any other items are approximate and no responsibility is taken for any error, omission or mis-statement. This plan is for illustrative purposes only and should be used as such by any prospective purchaser. The services, systems and appliances shown have not been tested and no guarantee as to their operability or efficiency can be given.  
Made with Metropix 5/2024

