



Chiltern Avenue, Bushey, WD23

Bushey

Offers Over
£899,950

Bedrooms: 4

Bathrooms: 2

Receptions: 2

An extended bright and spacious FOUR BEDROOM, TWO BATHROOM, THREE RECEPTION ROOM DETACHED FAMILY HOME situated on a sought after residential road in the heart of Bushey, conveniently located for all local shopping/transport facilities and opposite King George Park. The property is being offered in good decorative order and benefits from: Replacement Double Glazed Windows, Gas Fired Heating To Radiators, Guest Cloakroom, Lounge, Conservatory, Fully Fitted Kitchen/Diner, Utility Room, Bedroom One With En Suite Shower Room, Three Further Bedrooms, Family Bathroom, Secluded Rear Garden, Single Garage Approached Via Own Driveway With Off Street Parking.

POTENTIAL TO EXTEND STPP



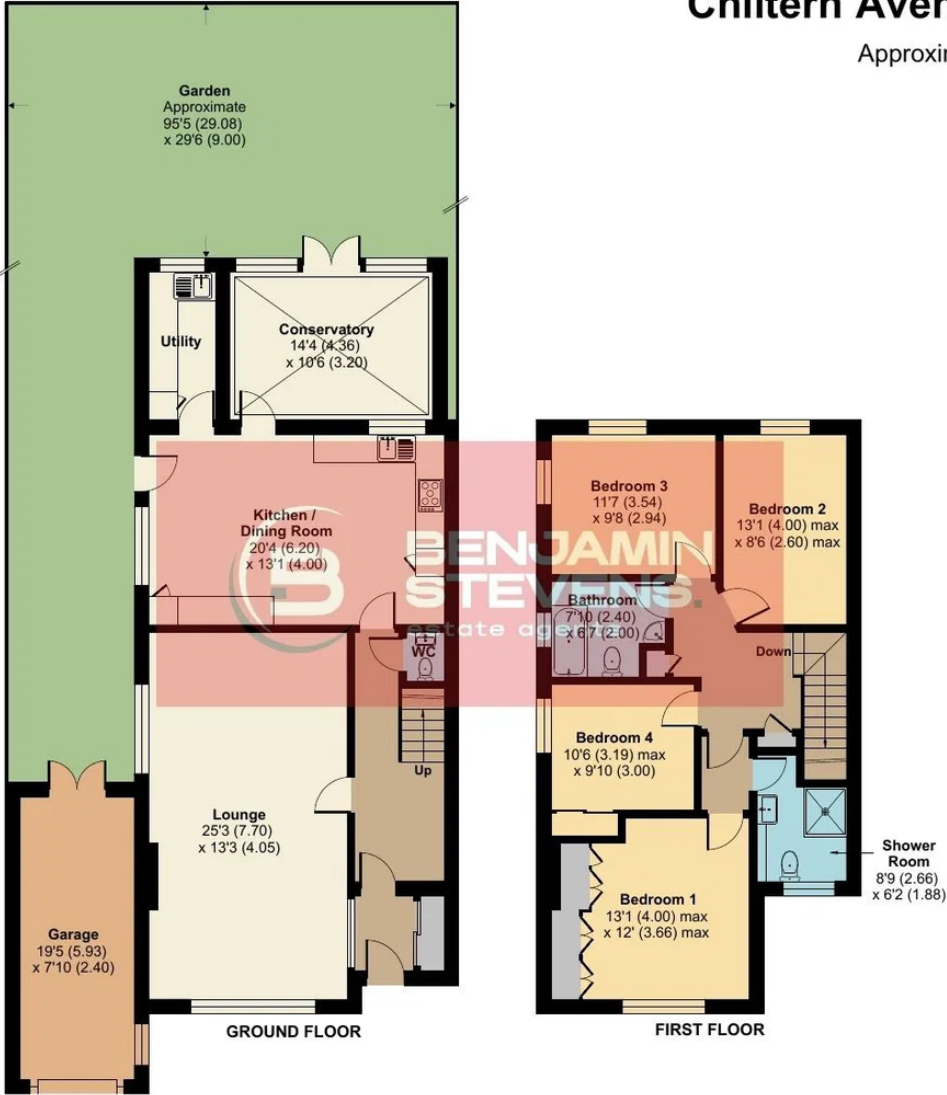




Chiltern Avenue, Bushey, WD23

Approximate Area = 1733 sq ft / 161 sq m
Garage = 153 sq ft / 14.2 sq m
Total = 1886 sq ft / 175.2 sq m

For identification only - Not to scale



Floor plan produced in accordance with RICS Property Measurement 2nd Edition, Incorporating International Property Measurement Standards (IPMS2 Residential). © n1cheom 2026. Produced for Benjamin Stevens. REF: 1485133