



Heathside Court, High Road, Bushey Heath WD23

Bushey

£365,000

Bedrooms: 1

Bathrooms: 1

Receptions: 1

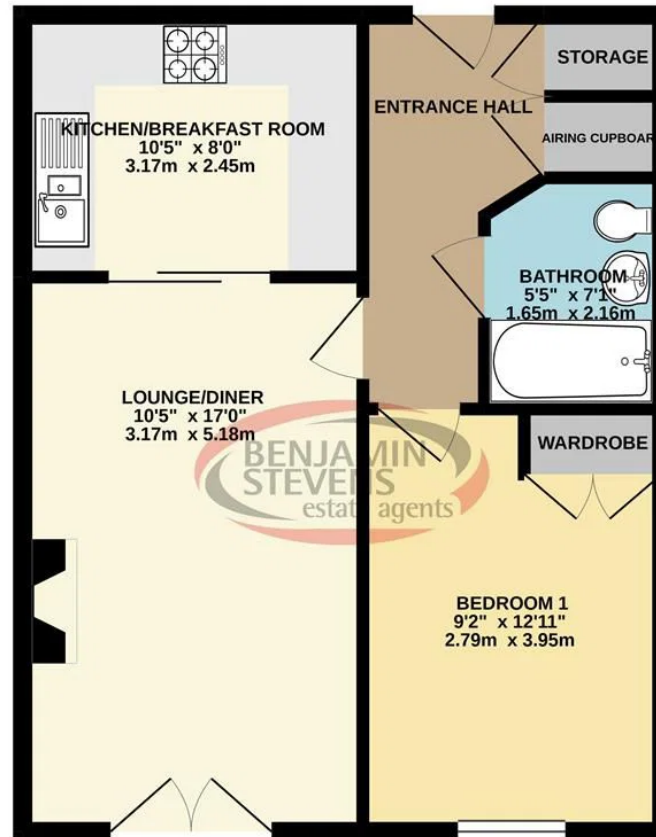
A ONE DOUBLE BEDROOM SECOND FLOOR APARTMENT with lift in the block located in the heart of Bushey Heath in one Bushey's most sought after blocks. Available to over 55's, this property is situated a short stroll from the local High Street shops, Synagogue and excellent local transport links. With a fully fitted modern kitchen, Juliet balcony and secure underground parking, Communal Grounds.

CHAIN FREE





484 sq.ft. (44.9 sq.m.) approx.



TOTAL FLOOR AREA : 484 sq.ft. (44.9 sq.m.) approx.

Whilst every attempt has been made to ensure the accuracy of the floorplan contained here, measurements of doors, windows, rooms and any other items are approximate and no responsibility is taken for any error, omission or mis-statement. This plan is for illustrative purposes only and should be used as such by any prospective purchaser. The services, systems and appliances shown have not been tested and no guarantee as to their operability or efficiency can be given.

Made with Metropix ©2021