



Colman Court, Rosedale Close, Stanmore, HA7

Stanmore

£520,000

Bedrooms: 3

Bathrooms: 2

Receptions: 1

A beautifully presented bright and spacious THREE BEDROOM, TWO BATHROOM SECOND FLOOR APARTMENT forming part of this sought after purpose built block off Gordon Avenue, conveniently located and within walking distance to all local shopping and transport facilities at Stanmore Broadway. The property is being offered in good decorative order and benefits from: Security Entryphone System, Double Glazed Windows, Gas Fired Heating To Radiators, Spacious Entrance Hall, Living Room With Access To Balcony & Panoramic Views Overlooking Stanmore Gold Course, Kitchen, Bedroom With One With Walk In Wardrobe & En Suite Shower Room, Two Further Bedrooms, Family Bathroom, Balcony, Communal Grounds, Garage, Parking.

SHARE OF FREEHOLD



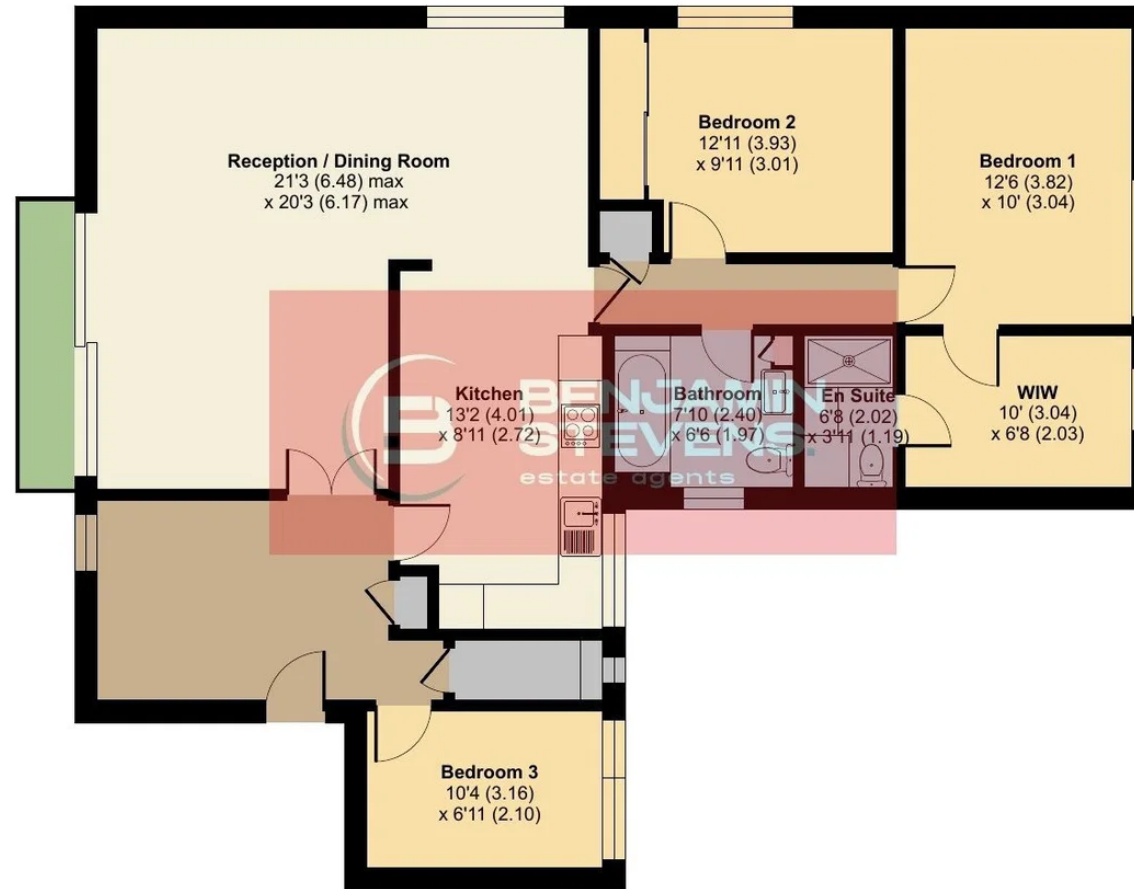




Colman Court, Rosedale Close, Stanmore, HA7

Approximate Area = 1201 sq ft / 111.5 sq m

For identification only - Not to scale



SECOND FLOOR



Floor plan produced in accordance with RICS Property Measurement 2nd Edition, Incorporating International Property Measurement Standards (IPMS2 Residential). © n7checom 2026. Produced for Benjamin Stevens. REF: 1470368