



Parklands Court, 164, Edgware Way, Edgware, HA8
Edgware



**BENJAMIN
STEVENS.**
estate agents **exp**

Guide Price
£425,000

Bedrooms: 2

Bathrooms: 2

Receptions: 1

An immaculate two-bedroom, two-bathroom first floor apartment located within the heart of Edgware, located close to transport links and the M1.

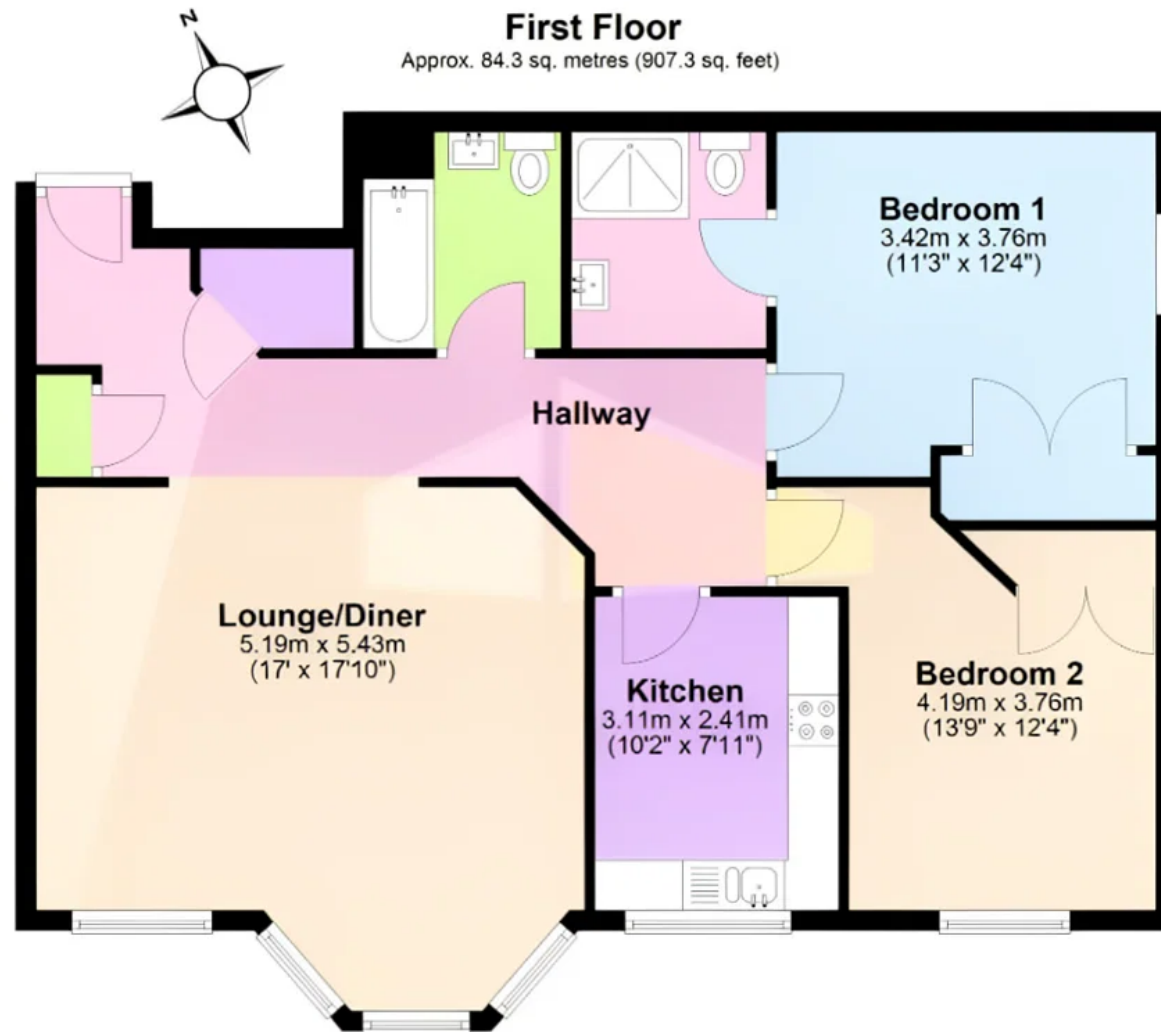
Spanning 900 sq ft, this well-proportioned apartment in a well maintained block features a spacious reception room, perfect for relaxation or entertaining. The layout includes two bedrooms with a separate family bathroom, en-suite to bedroom one and a separate kitchen.

The flat also backs onto the Edgwarebury Park, there is direct access provided near to the building. Further highlights include excellent storage, secure gated parking and beautifully maintained communal gardens, creating an ideal home for professionals, downsizers or investors alike.

Call Benjamin Stevens to view now!







Total area: approx. 84.3 sq. metres (907.3 sq. feet)

benjaminstevens.co.uk

Benjamin Stevens Estate Agents Limited Company Number 15143871 VAT number 464152108
Registered office: 194 Station Road, Edgware, England, HA8 7AT
Frederick George (Management Services) Ltd is an appointed representative of St Giles Insurance and Finance Services Limited which is authorised and regulated by the Financial Conduct Authority.

EDGWARE OFFICE

194 Station Road, Edgware, Middlesex, HA8 7AT

020 8958 1118