

Marlborough Drive, Bushey, WD23

Bushey

£1,100,000

Bedrooms: 3

Bathrooms: 2

Receptions: 2

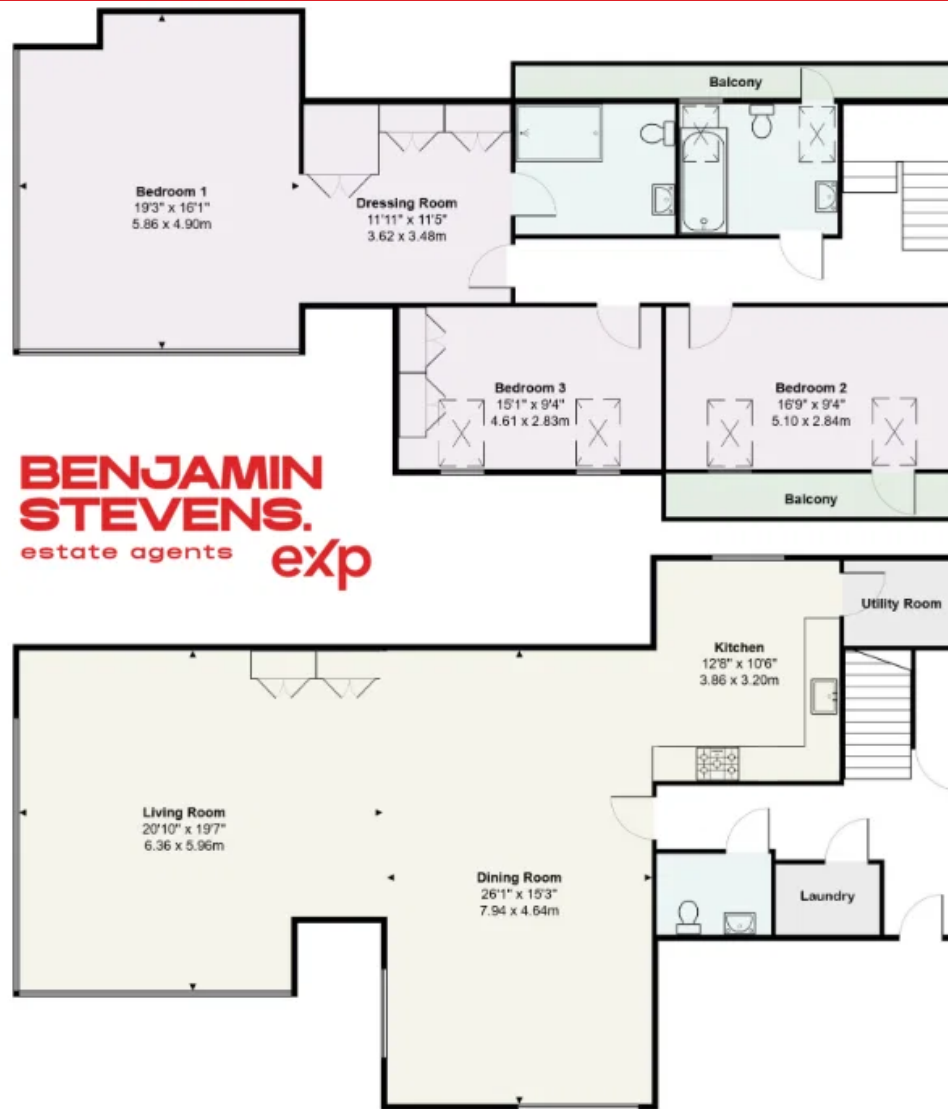
A unique opportunity to acquire this bright and spacious THREE BEDROOM, TWO BATHROOM DUPLEX PENTHOUSE APARTMENT forming part of the exclusive Royal Connaught Park Development in the heart of Bushey, conveniently located and within walking distance to all local shopping and transport facilities. The Property is being offered in excellent decorative order and benefits from: Video Entryphone System, Underfloor Heating, Lift Access, Spacious Living Room/Dining Room, Fully Fitted Modern Kitchen, Guest Cloakroom, Utility Room, Bedroom One With En Suite Shower Room, Two Further Bedrooms, Family Bathroom, Balcony With Views Overlooking Communal Grounds, Leisure Complex With Swimming Pool, Jacuzzi, Steam Room & Sauna Including A Fully Fitted Out Gymnasium, Communal Grounds With The Added Benefit Of A Tennis Court & Allocated Parking For Two Cars Including An Electric Charging Point & Storage Unit, 24 Hour Security.

CHAIN FREE









**BENJAMIN
STEVENS.**
estate agents **exp**

Lancaster House, Bushey

Approximate Gross Internal Area = 2203 Sq Ft / 204.7 Sq M