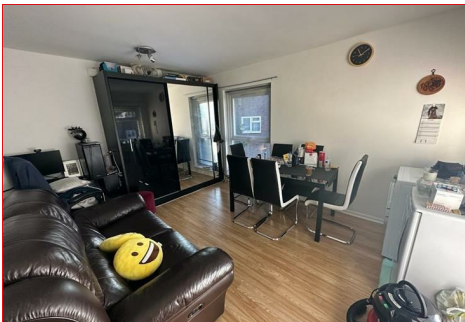
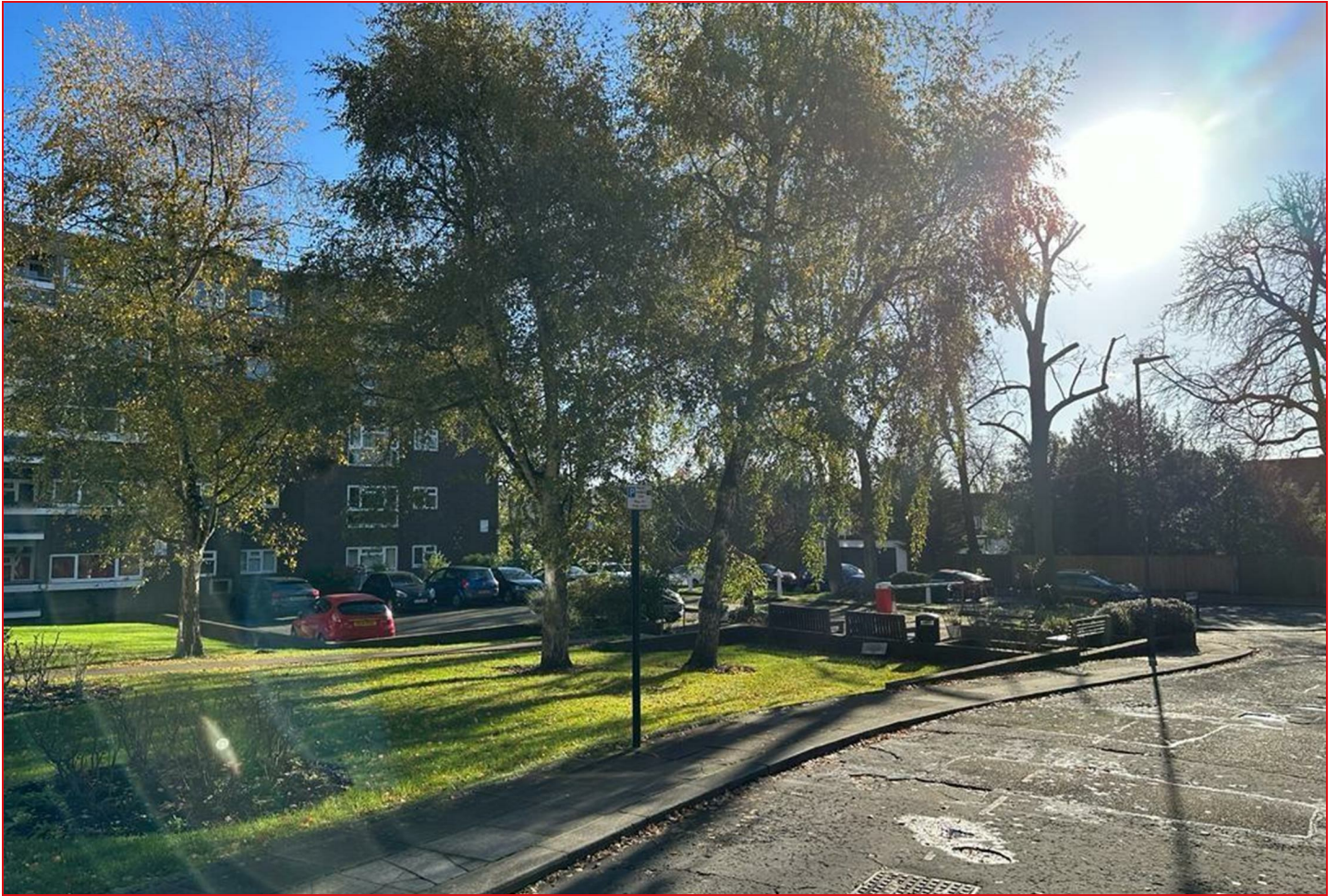




**BENJAMIN  
STEVENS.**  
estate agents



## 64 Lodge Close, Edgware, HA8 7RL

**£1,400 PCM**

Nestled in the charming area of Lodge Close, Edgware, this delightful flat offers a perfect blend of comfort and convenience. With one well-proportioned bedroom, this property is ideal for individuals or couples seeking a cosy living space. The flat features a welcoming reception room, providing a warm atmosphere for relaxation or entertaining guests.

The bathroom is thoughtfully designed, ensuring both functionality and style. One of the standout features of this property is the availability of parking for one vehicle, a valuable asset in this bustling area.

Edgware is known for its vibrant community and excellent transport links, making it easy to access central London and beyond. Local amenities, including shops, restaurants, and parks, are just a stone's throw away, enhancing the appeal of this location.

This flat presents a wonderful opportunity for those looking to establish a home in a sought-after neighbourhood. With its practical layout and prime location, it is sure to attract interest from a variety of renters. Do not miss the chance to make this charming flat your new home.

One parking space is available with a £60 deposit.



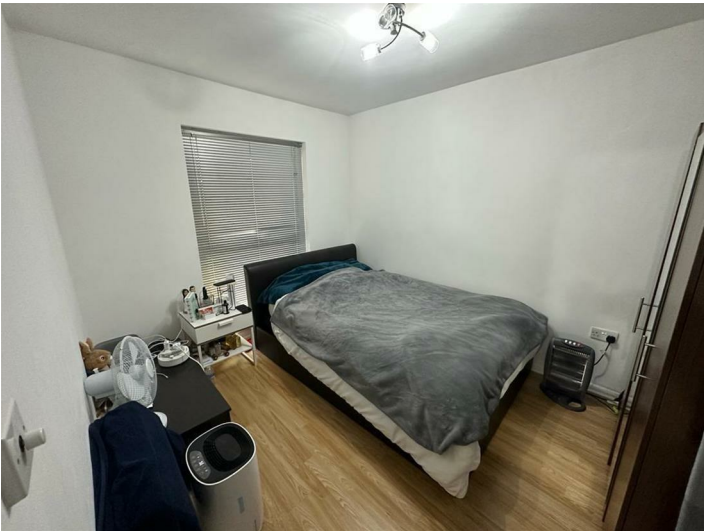
**Living Room**



**Bathroom**



**Bedroom**



**Exterior**



**Kitchen**

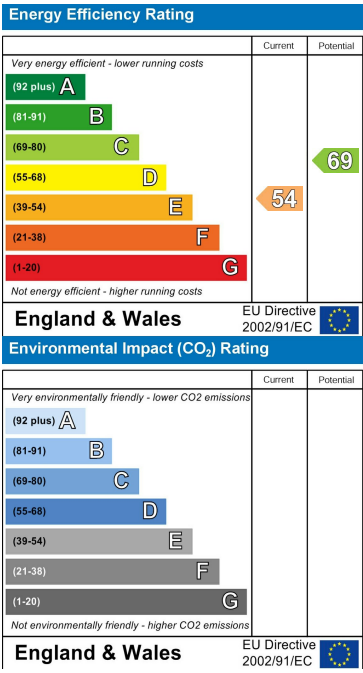


Floor Plan

Area Map



Energy Efficiency Graph



These particulars, whilst believed to be accurate are set out as a general outline only for guidance and do not constitute any part of an offer or contract. Intending purchasers should not rely on them as statements of representation of fact, but must satisfy themselves by inspection or otherwise as to their accuracy. No person in this firms employment has the authority to make or give any representation or warranty in respect of the property.

