



Hayling Road, South Oxhey, Watford
South Oxhey, Watford

£399,995

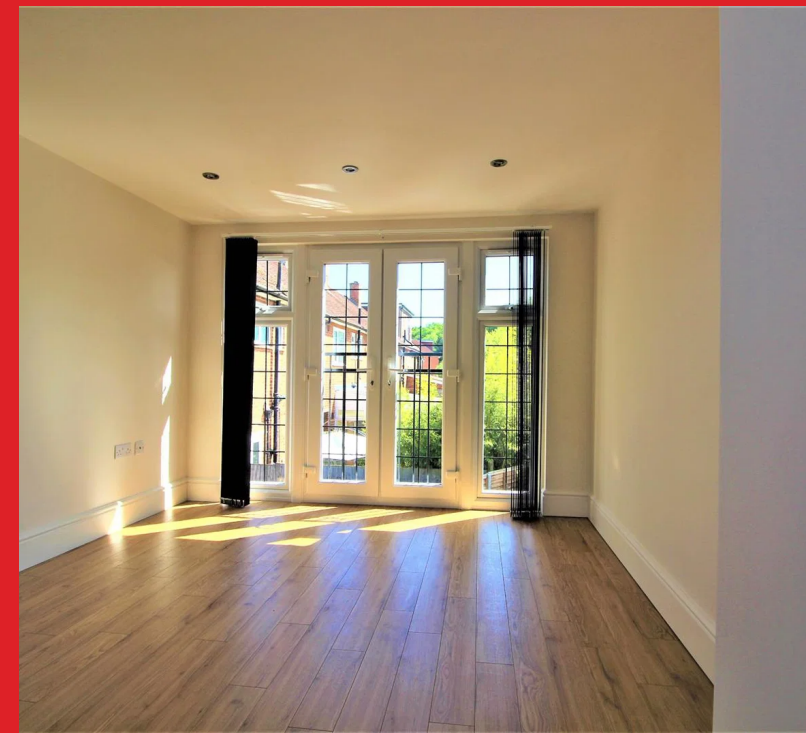
Bedrooms: 2

Bathrooms: 1

Receptions: 1

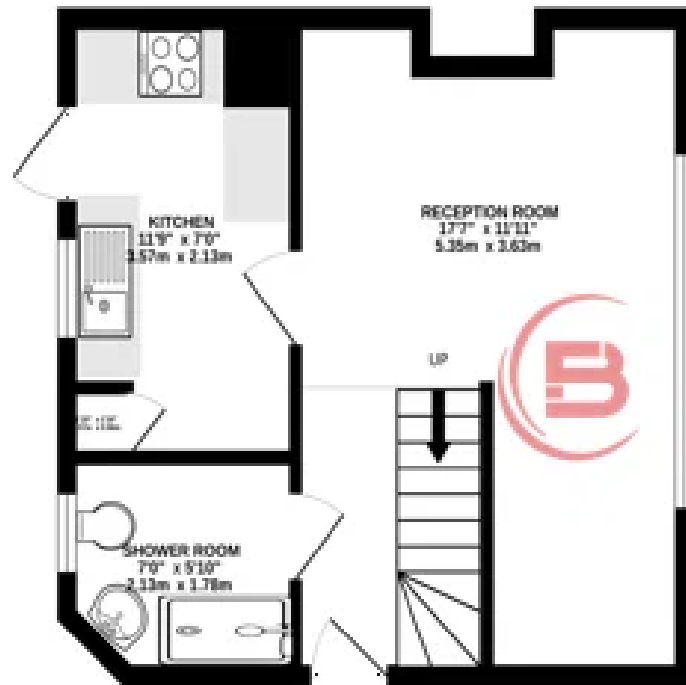
A bright and spacious TWO BEDROOM SEMI DETACHED BUNGALOW situated on a sought after residential road conveniently located for all local shopping and transport facilities. The property is being offered in good good decorative order and benefits from: Replacement Double Glazed Windows, Gas Fired Heating to Radiators, Reception Room, Kitchen, Two Bedrooms, Bathroom, Garden, Off Street Parking.

CHAIN FREE

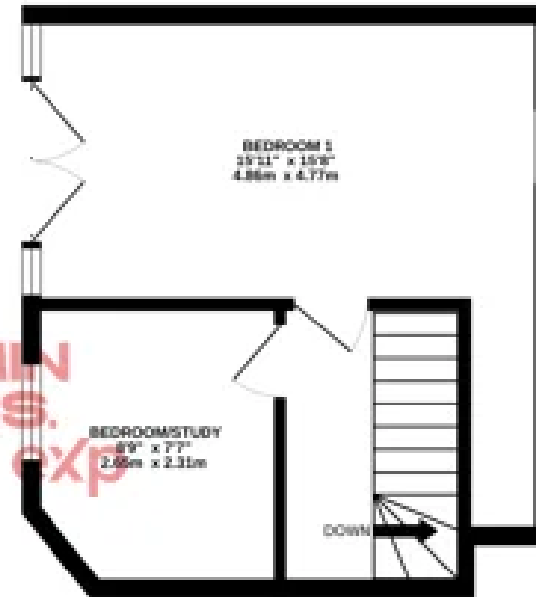




GROUND FLOOR
321 sq.ft. (29.8 sq.m.) approx.



1ST FLOOR
269 sq.ft. (25.0 sq.m.) approx.



BENJAMIN STEVENS.
estate agents **exp**

TOTAL FLOOR AREA : 590 sq.ft. (54.8 sq.m.) approx.

Whilst every attempt has been made to ensure the accuracy of the floorplan contained here, measurements of doors, windows, rooms and any other items are approximate and no responsibility is taken for any error, omission or mis-statement. This plan is for illustrative purposes only and should be used as such by any prospective purchaser. The services, systems and appliances shown have not been tested and no guarantee as to their operability or efficiency can be given.
Made with letroplan ©2025