



Yule House, Bricket Wood, St Albans, AL2

St. Albans

Offers Over £375,000

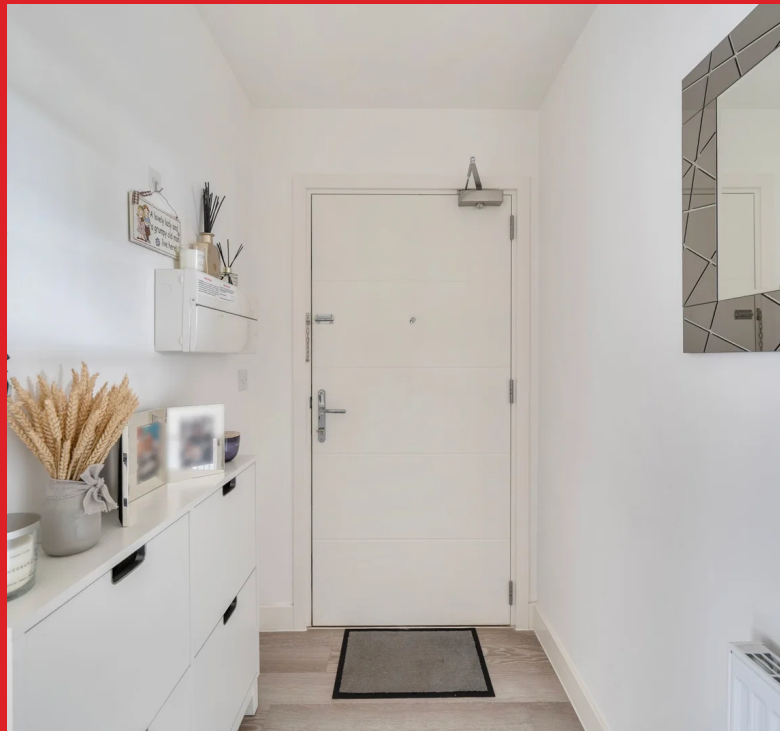
Bedrooms: 2

Bathrooms: 2

Receptions: 1

A bright and spacious TWO DOUBLE BEDROOM, TWO BATHROOM SECOND FLOOR APARTMENT forming part of the exclusive Hanstead Park Development constructed in 2021, Conveniently located for all local shopping and transport facilities. The property is being offered in excellent decorative order and benefits from: Security Entryphone System, Lift, Utility Cupboard, Reception Room With Fully Fitted Open Plan Kitchen, Bedroom One With En Suite Shower Room, Bedroom Two, Family Bathroom, Stunning Communal Grounds & Playground Area Including a Bus Route through The Development Giving Access To All Local Destinations, Allocated Parking.

CHAIN FREE



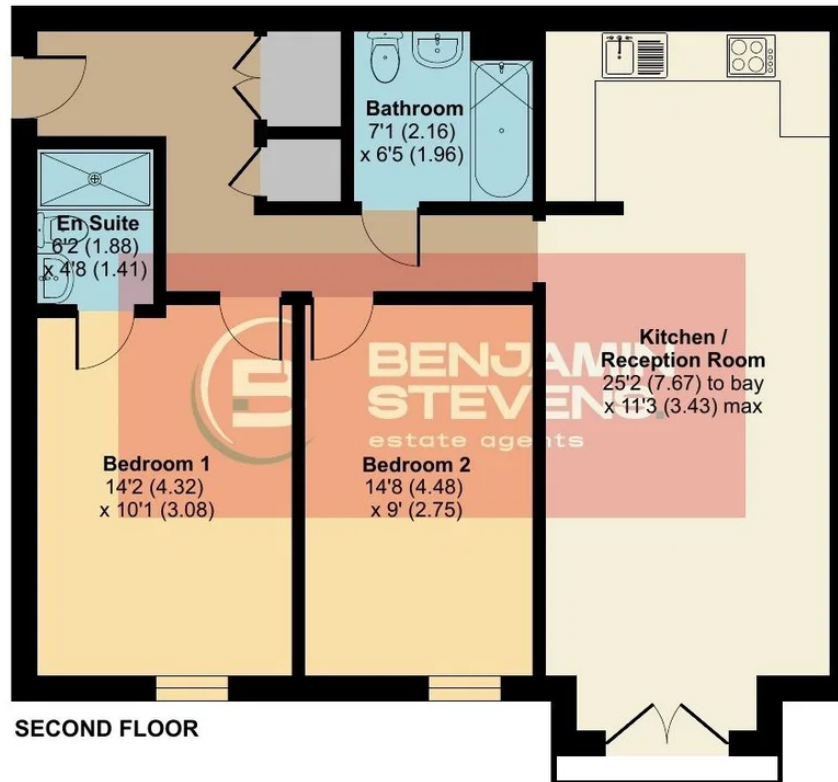




Yule House, Redland Way, Bricket Wood, St. Albans, AL2

Approximate Area = 815 sq ft / 75.7 sq m

For identification only - Not to scale



Floor plan produced in accordance with RICS Property Measurement 2nd Edition,
Incorporating International Property Measurement Standards (IPMS2 Residential). © n̄checom 2026.
Produced for Benjamin Stevens. REF: 1459270