



Ranelagh Drive, Edgware, HA8
Edgware

£750,000

Bedrooms: 3

Bathrooms: 1

Receptions: 1

A Three-bedroom semi-detached home, ideally located on the desirable Ranelagh Drive in Edgware, HA8.

The ground floor features a bright and spacious reception room, offering a welcoming atmosphere perfect for relaxation or entertaining. The well-appointed kitchen provides a functional space for daily living.

Upstairs, you will find three comfortable bedrooms and a well-maintained family bathroom.

The property benefits from a private rear garden, providing an ideal outdoor space, off-street parking and a garage.

Ranelagh Drive offers excellent access to local amenities, including shopping facilities, parks, and convenient transport links.

Call Benjamin Stevens to view now!







Ranelagh Drive, Edgware, HA8

Approximate Area = 1383 sq ft / 128.4 sq m

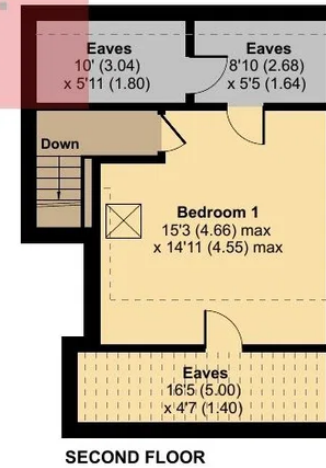
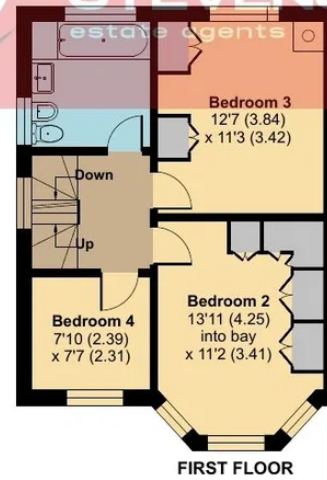
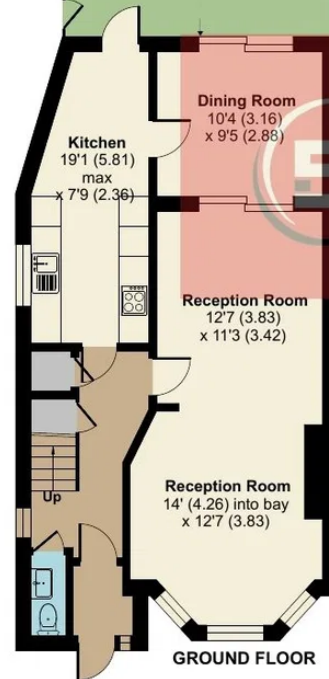
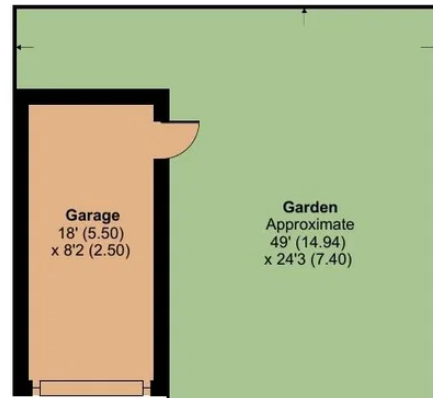
Limited Use Area(s) = 244 sq ft / 22.6 sq m

Garage = 148 sq ft / 13.7 sq m

Total = 1775 sq ft / 164.3 sq m

For identification only - Not to scale

Denotes restricted head height



Floor plan produced in accordance with RICS Property Measurement 2nd Edition, Incorporating International Property Measurement Standards (IPMS2 Residential). © nctecom 2026. Produced for Benjamin Stevens. REF: 1459290