



Primrose Gardens, Bushey, WD23
Bushey

Offers Over £499,950

Bedrooms: 3

Bathrooms: 1

Receptions: 1

A bright and spacious THREE BEDROOM END OF TERRACE HOUSE situated on a popular residential road, conveniently located and within walking distance to all local shopping/transport facilities and within a great catchment area for all local schools. The property is being offered in good decorative order and benefits from: Replacement Double Glazed Windows, Gas Fired Heating To Radiators, Fully Boarded Loft With Velux Window, Reception Room, Kitchen, Three Bedrooms, Bathroom, Rear Garden With Gated Side Access.



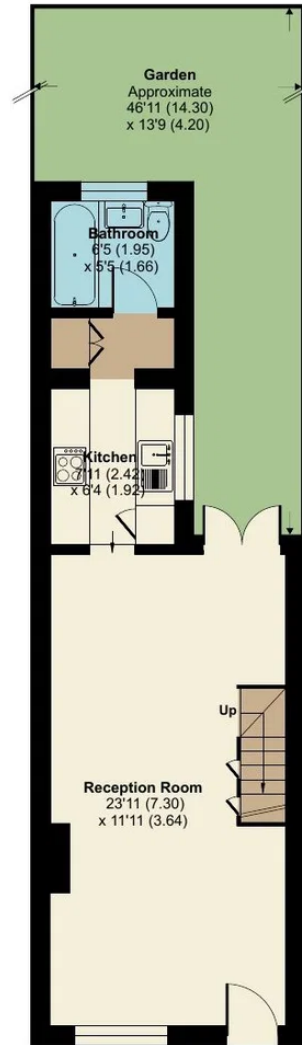




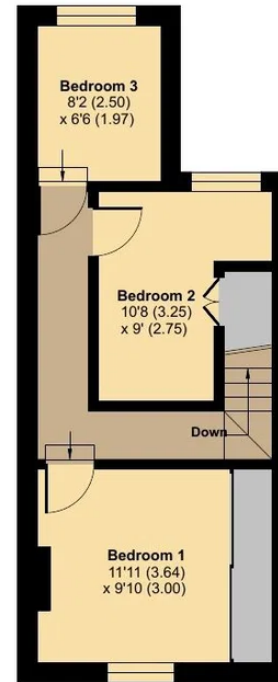
Primrose Gardens, Bushey, WD23

Approximate Area = 738 sq ft / 68.5 sq m

For identification only - Not to scale



GROUND FLOOR



FIRST FLOOR



Floor plan produced in accordance with RICS Property Measurement 2nd Edition,
Incorporating International Property Measurement Standards (IPMS2 Residential). © n̄checon 2026.
Produced for Benjamin Stevens. REF: 1457663