
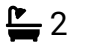



Sefton Avenue, London, NW7 3QD

Offers Over £950,000

 5  2  2



A spacious and well-maintained five-bedroom semi-detached family home in this desirable Mill Hill location.

Accommodation comprises Five Bedrooms, Two Bathrooms, a large through lounge, large kitchen and a separate utility room.

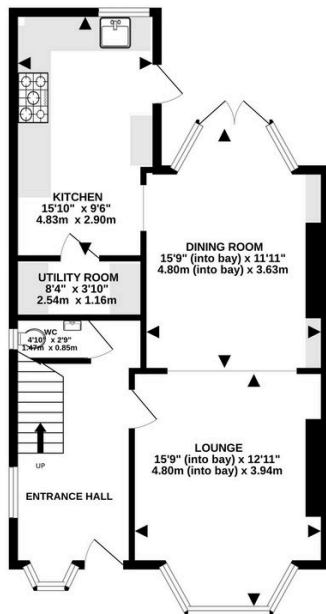
Features include ample off-street parking and a private garden.

An early viewing is recommended via vendor's agents Benjamin Stevens.

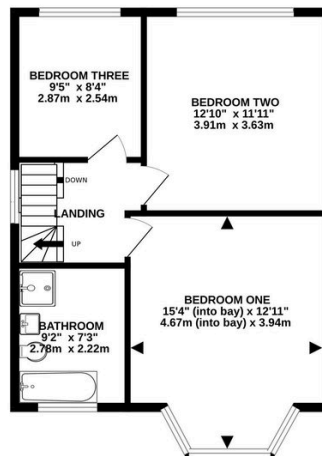
Key Features

- Five Bedrooms
- En-Suite shower room
- Separate utility room
- Desirable Mill Hill Location
- Family Bathroom
- Large Through Lounge
- Large Kitchen
- Guest Cloakroom
- Well maintained garden

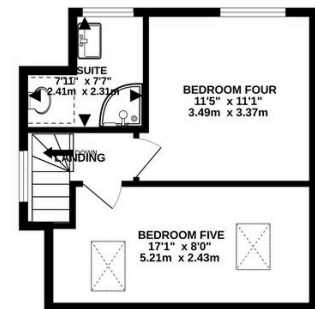
GROUND FLOOR
637 sq.ft. (59.2 sq.m.) approx.



1ST FLOOR
533 sq.ft. (49.5 sq.m.) approx.



2ND FLOOR
336 sq.ft. (31.2 sq.m.) approx.



TOTAL FLOOR AREA: 1506 sq.ft. (139.9 sq.m.) approx.

Whilst every attempt has been made to ensure the accuracy of the floorplan contained here, measurements of doors, windows, rooms and any other items are approximate and no responsibility is taken for any error, omission or mis-statement. This plan is for illustrative purposes only and should be used as such by any prospective purchaser. The services, systems and appliances shown have not been tested and no guarantee as to their operability or efficiency can be given.

Made with Metropix ©2025