



Harville Court, Mornington Close, NW9
London



**BENJAMIN
STEVENS.**
estate agents **exp**

£375,000

Bedrooms: 2

Bathrooms: 1

Receptions: 1

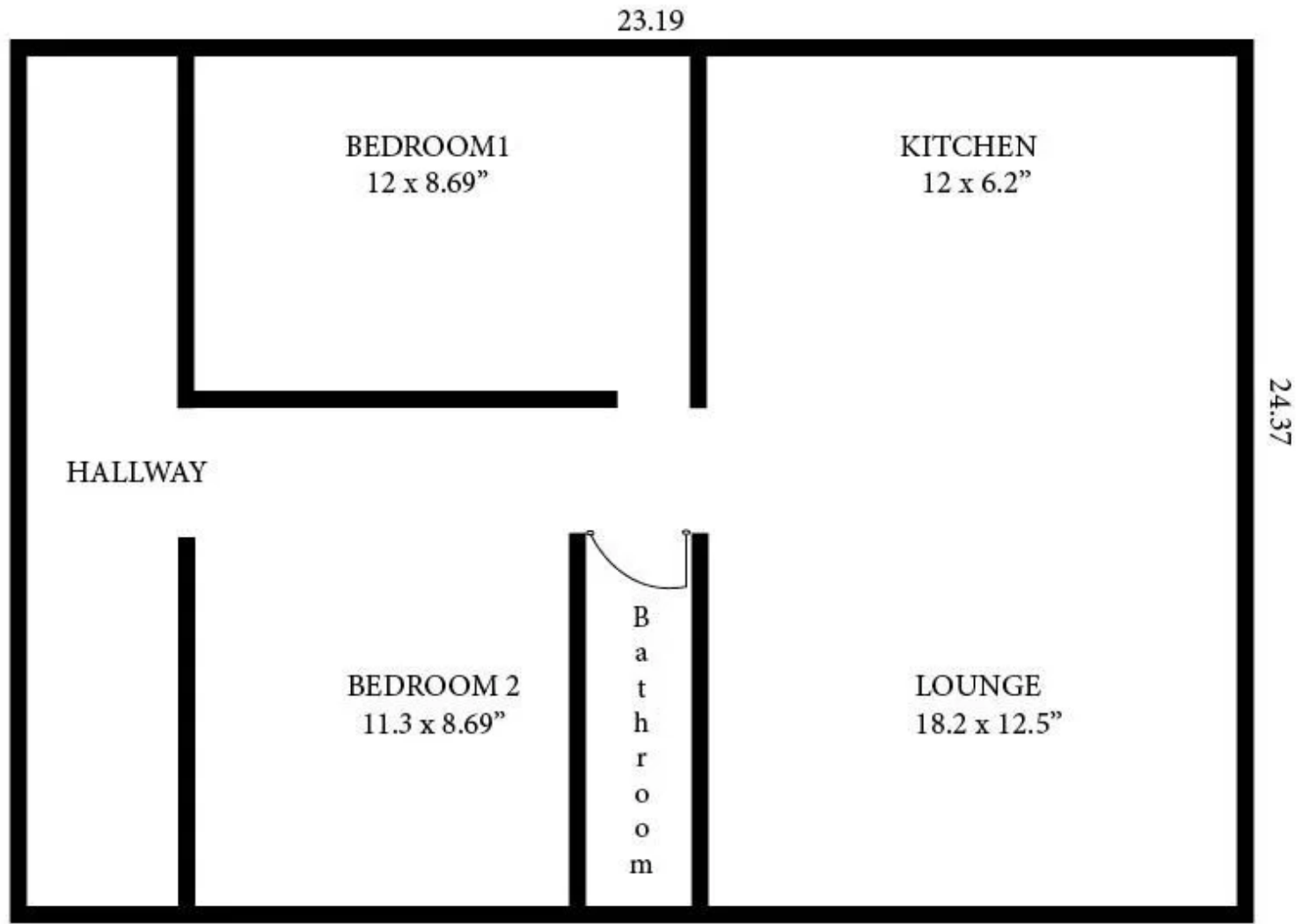
A bright and spacious two-bedroom flat set within a vibrant London neighbourhood full of shops and restaurants in the heart of Colindale within walking distance to Colindale Station.

The property features two comfortable bedrooms, providing adequate space for residents. These are complemented by a well-appointed bathroom, designed for everyday convenience. The kitchen is open plan to the reception area which also benefits from a balcony to the rear

Call Benjamin Stevens to view!



4 Harville Court, Colindale NW9 5HH



benjaminstevens.co.uk

EDGWARE OFFICE

Benjamin Stevens Estate Agents Limited Company Number 15143871 VAT number 464152108
Registered office: 194 Station Road, Edgware, England, HA8 7AT
Frederick George (Management Services) Ltd is an appointed representative of St Giles Insurance and Finance Services Limited which is authorised and regulated by the Financial Conduct Authority.

194 Station Road, Edgware, Middlesex, HA8 7AT

020 8958 1118