

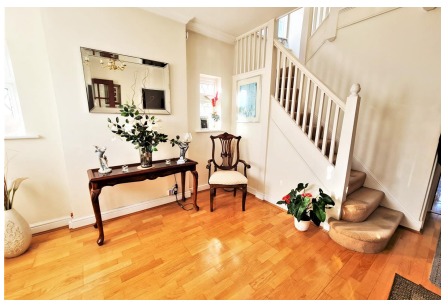


## Hazel Gardens, Edgware

Offers Over £900,000

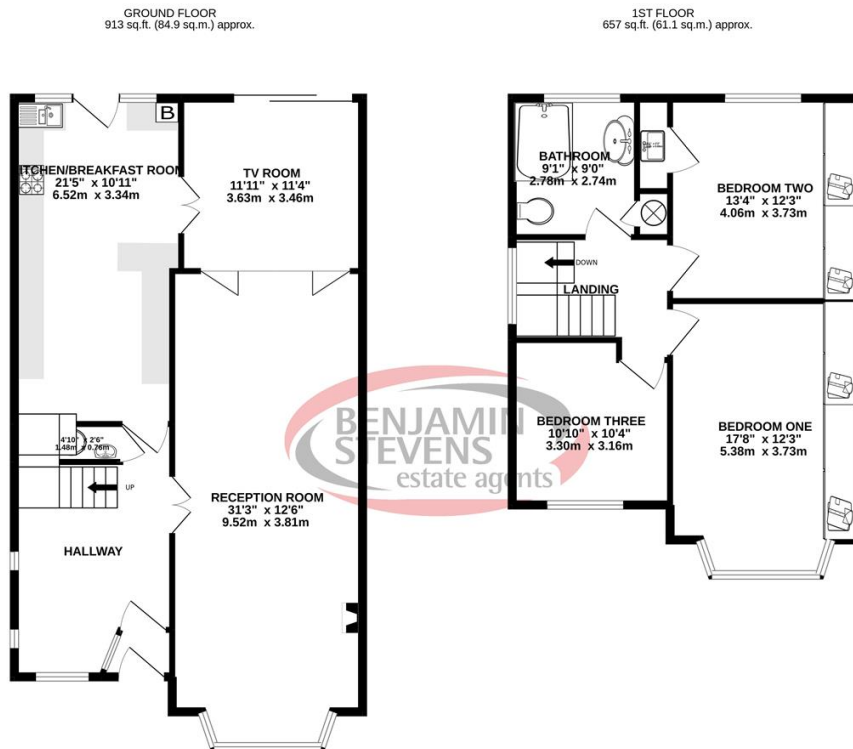
 3  1  2



A Spacious Detached Family Home in this popular Edgware location. Accommodation comprises a large through lounge and dining room, TV room, Kitchen diner, three double bedrooms, and a large family bathroom. Features include ample off street parking, and garage via own drive. Potential to extend S.T.P.P. An early viewing is highly recommended via vendor's sole agents Benjamin Stevens. Call now to view!

## Key Features

- Detached family home
- Off Street Parking
- Within the Eruv
- Sole Agent
- Popular location
- Private Garden
- Three double bedrooms



TOTAL FLOOR AREA: 1571 sq.ft. (145.9 sq.m.) approx.  
Whilst every attempt has been made to ensure the accuracy of the floorplan contained here, measurements of doors, windows, rooms and any other items are approximate and no responsibility is taken for any error, omission or mis-statement. This plan is for illustrative purposes only and should be used as such by any prospective purchaser. The services, systems and appliances shown have not been tested and no guarantee as to their operability or efficiency can be given.  
 Made with Metropix ©2022