



99 The Greenway, Offers Over £699,950

3 1

A Double Storey extended Three Double Bedroom Family Home with Off Street Parking, in this desirable location.

Accommodation comprises Three Double Bedrooms, One with Walk in Wardrobe. Large Through Lounge with Reception and Lounge area, Separate Dining Room, and Kitchen. Well located close to local shopping, schooling, transport and amenities.

Features a large private Garden.

Sole Agents. Call now to view!

- Three Double Bedrooms
- Double Story Extended
- Walk in Wardrobe
- Two Large Receptions.
- Private Garden
- Close to local Amenities, Schooling and Transport.

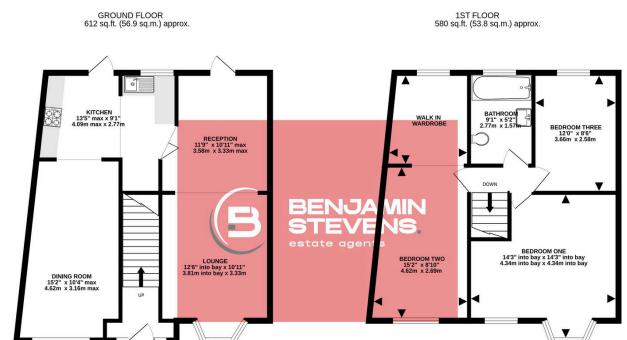
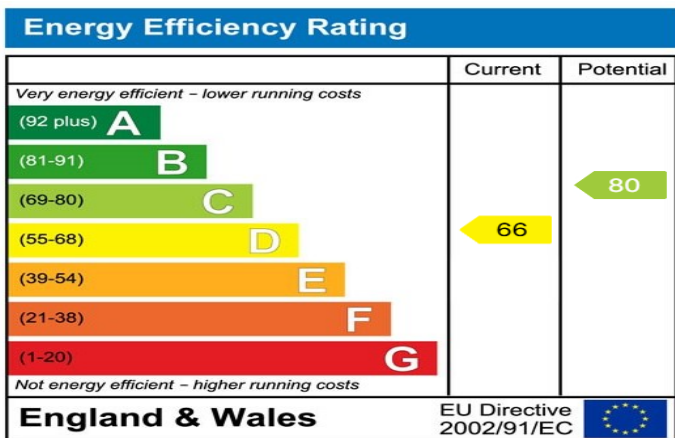


Floor Area: sq. ft.

Tenure: Freehold

Service Charge: £ per annum

Ground Rent: £ per annum



TOTAL FLOOR AREA: 1192 sq. ft. (110.7 sq. m.) approx.

While every effort has been made to ensure the accuracy of this description, Benjamin Stevens, its agents, advisers, and any other third party, does not accept any responsibility for any errors, omissions, or misstatements. This plan is for information only and does not constitute an offer of any property. The plan is subject to change without notice and is not to be relied upon for any purpose other than for general information only. The plan is not to be used for any other purpose without the prior written consent of Benjamin Stevens.