



Belvedere Southend Road, Billericay - CM11 2PT

£575,000 Freehold

This is not your usual four bedroom semi-detached house! With over 1300 sq. ft of accommodation, integral garage and large frontage for multiple vehicles and approx. 100 ft rear garden, this home certainly has a lot to offer.

Located in a non-estate position, opposite fields to the front, is this substantial home. Offering generous proportioned accommodation including 19ft x 17ft lounge opening out onto the sunny south westerly facing garden, four double bedrooms and a large loft space ripe for conversion (STPP). Those looking to create open plan living will appreciate the space to do so.

Council Tax band: E ~ EPC Energy Efficiency Rating: D



tyler estates

01277 626181

www.tylerestates.co.uk



Porch

Entrance Hall

Cloakroom

Lounge

17' 3" x 19' 0" (5.26m x 5.78m)

Dining Room/Sitting Room

15' 11" x 7' 11" (4.84m x 2.41m)

Landing

Bedroom One

12' 11" x 12' 6" (3.94m x 3.80m)

Bedroom Two

12' 11" x 9' 11" (3.94m x 3.02m)

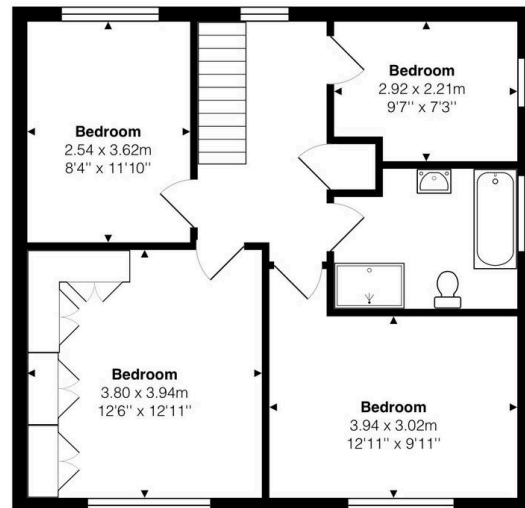
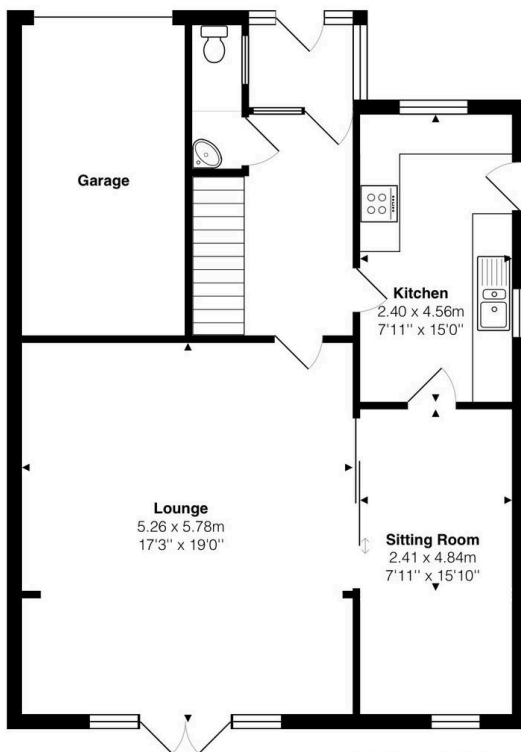
Bedroom Three

11' 11" x 8' 4" (3.62m x 2.54m)

Bedroom Four

9' 7" x 7' 3" (2.92m x 2.21m)

Bathroom



Total Area: 127.1 m² ... 1368 ft² (excluding garage)

Measurements are approximate for illustrative purposes only and may have been taken from the widest area
Floorplan Copyright The Estate Agents Photographer
www.theestatesagentsphotographer.co.uk