



54 Bramble Tye, Noak Bridge - SS15 5GS

£250,000 Leasehold

Council Tax band: C ~ EPC Energy Efficiency Rating: C

This light-filled first floor apartment offers a wonderful blend of modern living in tranquil surroundings. Overlooking an attractive tree-lined green, the property boasts two well-proportioned bedrooms, spacious open-plan living area and externally two allocated parking spaces.



tyler estates

01277 626181

www.tylerestates.co.uk



Entrance Hall

Lounge / Diner

10' 8" x 14' 6" (3.25m x 4.42m)

Kitchen

8' 0" x 8' 1" (2.44m x 2.46m)

Bedroom One

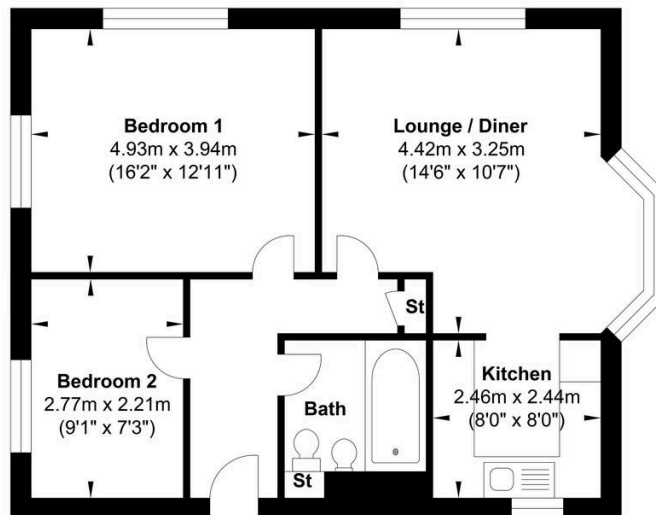
12' 11" x 16' 2" (3.94m x 4.93m)

Bedroom Two

9' 1" x 7' 3" (2.77m x 2.21m)

Bathroom

6' 6" x 5' 6" (1.98m x 1.68m)



First Floor

Gross Internal Floor Area : 57.60 m2 ... 620.0 ft2

Whilst every attempt has been made to ensure the accuracy of the floor plan contained here, measurements of doors, windows, rooms and any other items are approximate and no responsibility is taken for any error, omission, or mis-statement. This plan is for illustrative purposes only and should be used as such by any prospective purchaser. The services, systems and appliances shown have not been tested and no guarantee as to their operability or efficiency can be given.