



20 Well Lane, Stock - CM4 9LU

£725,000 Freehold

Council Tax band: F ~ EPC Energy Efficiency Rating: E

This charming three-bedroom extended end of terrace cottage is nestled in a peaceful corner position within the sought-after 'Rumbles Green' off Well Lane, in the picturesque village of Stock.

Set on a generous plot of approximately 0.2 acres, the property offers light-filled and versatile accommodation, thoughtfully designed to suit family living.



tyler estates

01277 626181

www.tylerestates.co.uk



Porch Area

Entrance Hall

Lounge

23' 8" x 12' 2" (7.22m x 3.70m)

Kitchen / Breakfast Room

15' 0" x 10' 11" (4.58m x 3.32m)

Dining Room

15' 1" x 9' 0" (4.60m x 2.74m)

Sitting Room/ Bedroom

11' 5" x 10' 8" (3.47m x 3.26m)

Cloakroom

Landing

Bedroom One

11' 7" x 11' 4" (3.52m x 3.46m)

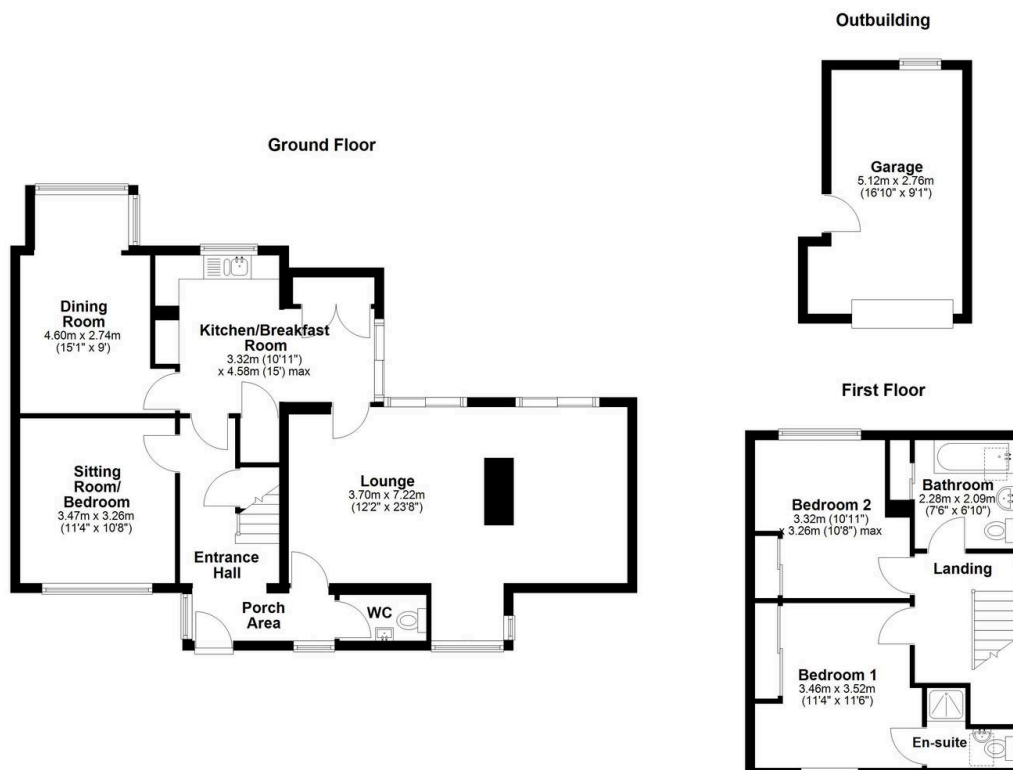
En-suite

Bedroom Two

10' 11" x 10' 8" (3.32m x 3.26m)

Bathroom

7' 6" x 6' 10" (2.28m x 2.09m)



Total area: approx. 132.8 sq. metres (1429.8 sq. feet)