



5 Fir Court, Laindon - SS15 4EY

£265,000 Leasehold

Council Tax band: D

Tenure: Leasehold

EPC Energy Efficiency Rating: C

EPC Environmental Impact Rating: B



tyler estates

01277 626181

www.tylerestates.co.uk



Hallway
22' 9" x 3' 8" (6.93m x 1.12m)

Kitchen
9' 9" x 6' 2" (2.98m x 1.89m)

Lounge
14' 11" x 11' 9" (4.55m x 3.59m)

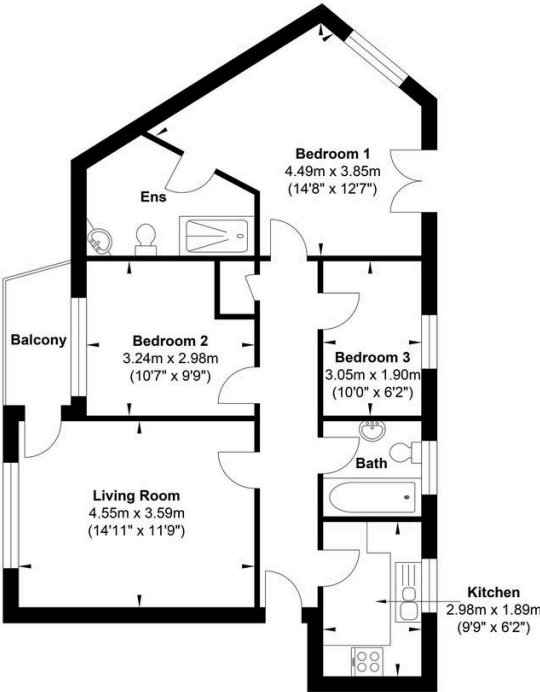
Bedroom
14' 9" x 12' 8" (4.49m x 3.85m)

En-suite
10' 11" x 7' 8" (3.32m x 2.33m)

Bedroom
10' 8" x 9' 9" (3.24m x 2.98m)

Bedroom
10' 0" x 6' 3" (3.05m x 1.90m)

Bathroom
6' 4" x 6' 0" (1.92m x 1.84m)



Gross Internal Floor Area : 72.04 m2 ... 775.43 ft2

Whilst every attempt has been made to ensure the accuracy of the floor plan contained here, measurements of doors, windows, rooms and any other items are approximate and no responsibility is taken for any error, omission, or mis-statement. This plan is for illustrative purposes only and should be used as such by any prospective purchaser. The services, systems and appliances shown have not been tested and no guarantee as to their operability or efficiency can be given.