

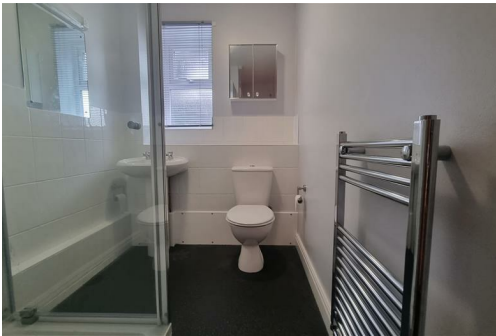


6 Grosvenor Court, Pedmore DY9 0RY



Nestled on the charming Redlake Road in Pedmore, this delightful flat offers a perfect blend of comfort and convenience. With two well-proportioned bedrooms, this property is ideal for small families, couples, or individuals seeking a peaceful retreat. The flat features a spacious reception room, providing a welcoming space for relaxation or entertaining guests.

The property boasts two modern bathrooms, ensuring that morning routines are a breeze and providing ample facilities for residents and visitors alike. The thoughtful layout maximises space and light, creating a warm and inviting atmosphere throughout.



IMPORTANT NOTICE 1. No description or information given whether or not these particulars and whether written or verbal (information) about the property or its value may be relied upon as a statement or representation of fact. Lex Allan do not have any authority to make representation and accordingly any information is entirely without responsibility on the part of Lex Allan or the seller. 2. The photographs (and artists impression) show only certain parts of the property at the time they were taken. Any areas, measurements or distances given are approximate only. 3. Any reference to alterations to, or use of any part of the property is not a statement that any necessary planning, building regulations or other consent has been obtained. 4. No statement is made about the condition of any service or equipment or whether they are year 2000 compliant.

VIEWING View by appointment only with Lex Allan. Opening times: Monday - Friday 9.00am to 5.30pm, Saturday 9.00am to 4.00pm.

LexAllan

local knowledge exceptional service

The Auction House, 87 - 88 St. Johns Road,
Stourbridge, West Midlands, DY8 1EH

info@lexallan.co.uk

01384 379450

www.lexallan.co.uk