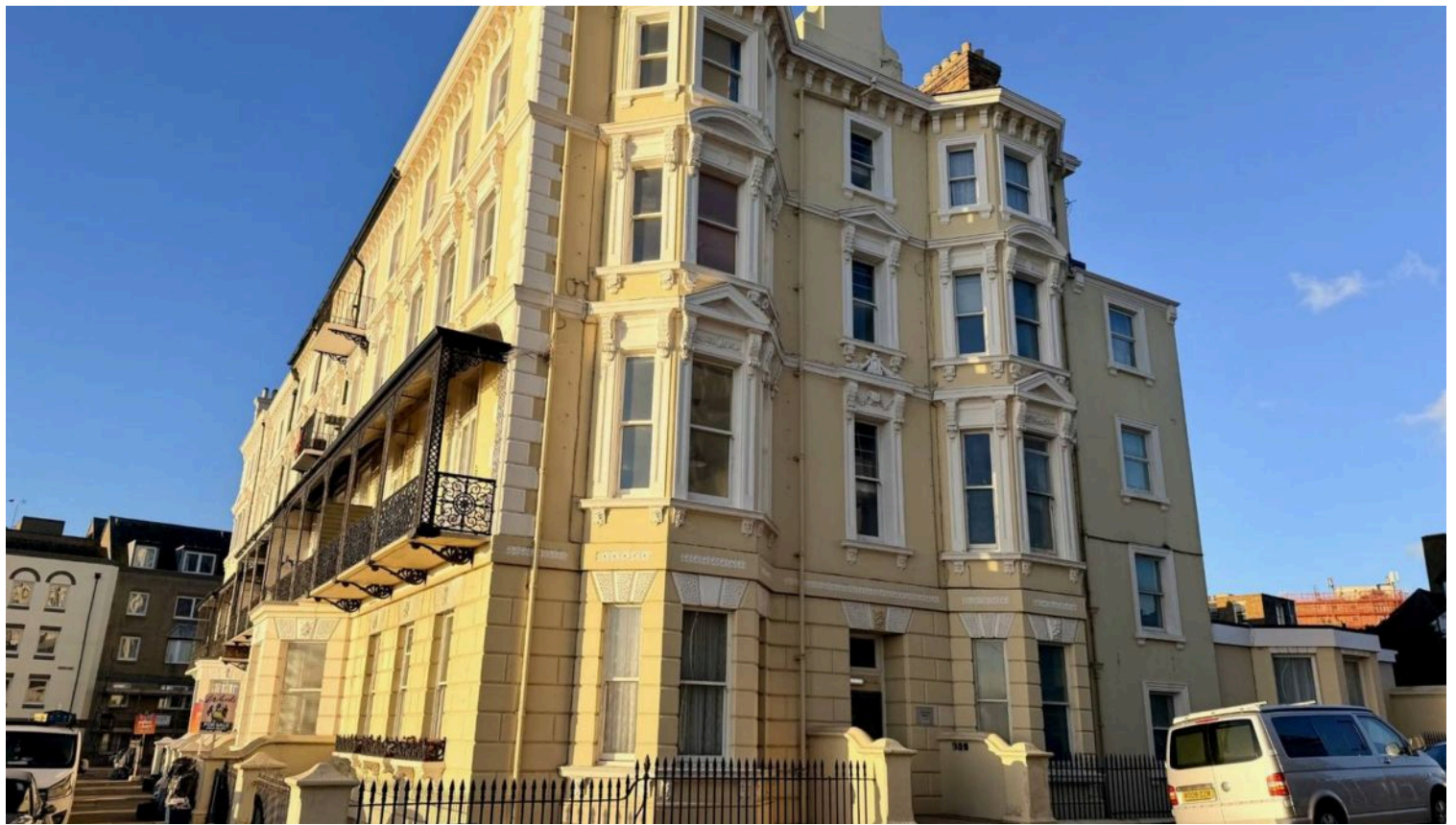




Proudly Presents
FLAT 7, VICTORIA HOUSE, 5 VICTORIA PARADE





Living Room

18' 1" x 10' 10" (5.51m x 3.30m)

This impressively spacious reception room is the centrepiece of the home, defined by a grand three-part bay window and an additional large sash window that together provide panoramic views of the coastline. The room retains its period proportions with high ceilings and offers a fantastic blank canvas for restoration. Flooded with natural light, this space has the potential to become a spectacular living and dining area once finished.

Bedroom

12' 4" x 7' 10" (3.76m x 2.39m)

A well-proportioned double bedroom offering a peaceful outlook over the water. The room features a built-in alcove perfect for storage or a wardrobe, and traditional high ceilings. Currently in a mid-renovation state, it represents an excellent opportunity for the new owner to decorate to their own taste and create a light-filled, relaxing retreat.



Kitchen

8' 10" x 6' 6" (2.69m x 1.98m)

A bright and functional kitchen space featuring modern wood-effect cabinetry and contrasting dark countertops. The room is perfectly positioned to enjoy a direct sea view through the large sash window while cooking. It includes an integrated extractor hood, stainless steel sink, and dedicated space for under-counter appliances. This is a well-arranged space that could be easily refreshed to create a contemporary coastal kitchen.

Bathroom

Living Room

18' 1" x 10' 10" (5.51m x 3.30m)

This impressively spacious reception room is the centrepiece of the home, defined by a grand three-part bay window and an additional large sash window that together provide panoramic views of the coastline. The room retains its period proportions with high ceilings and offers a fantastic blank canvas for restoration. Flooded with natural light, this space has the potential to become a spectacular living and dining area once finished.

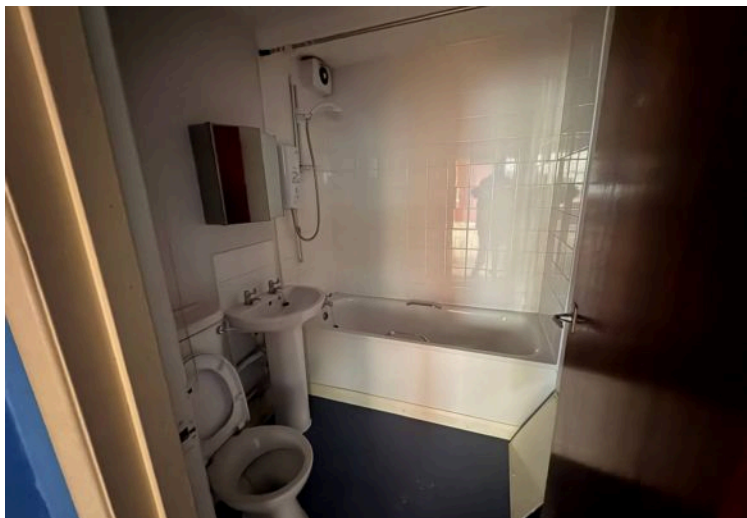
Bedroom

12' 4" x 7' 10" (3.76m x 2.39m)

A well-proportioned double bedroom offering a peaceful outlook over the water. The room features a built-in alcove perfect for storage or a wardrobe, and traditional high ceilings. Currently in a mid-renovation state, it represents an excellent opportunity for the new owner to decorate to their own taste and create a light-filled, relaxing retreat.

Kitchen







One-bedroom seafront flat with panoramic sea views, period features, spacious rooms, bright kitchen, and renovation potential. Ideal for investors or as a coastal retreat.

Council Tax band: A

Tenure: Leasehold

EPC Energy Efficiency Rating: E

EPC Environmental Impact Rating: F

You can include any text here. The text can be modified upon generating your brochure.