



**BRADFORD
& HOWLEY**
HARPENDEN | MARSHALSWICK | ST ALBANS

Netherway, St. Albans, AL3 4NE
Asking Price £700,000

Situated within a quiet cul-de-sac in the popular St Stephens area of St Albans, this attractive and extended two-bedroom semi-detached bungalow offers flexible accommodation arranged over two levels, together with a pleasant outlook and the benefit of no upper chain.

The ground floor provides well balanced living space, ideally suited to modern lifestyles.

The property benefits from two reception rooms, offering versatility for both everyday living and entertaining.

These spaces can be arranged as a comfortable sitting room and separate dining area or adapted to suit individual requirements.

A particular highlight is the wonderful outlook to the front, providing an open and appealing aspect that enhances the sense of light and space within the home.

The ground floor also includes a double bedroom served by a bathroom, making the layout particularly practical for those seeking a degree of single level living.

The property has been thoughtfully extended into the eaves, creating a principal bedroom suite on the first floor.

This space provides a more private retreat, complete with its own en-suite bathroom, and adds an extra dimension of flexibility to the accommodation.

Externally, the property benefits from parking and a garage, offering valuable convenience and storage within this established residential location.

The cul-de-sac setting adds to the overall appeal, creating a peaceful environment while still being well positioned for access to local amenities, transport links and the wider St Albans area.

Overall, this is a well located and adaptable home offering flexible living space, a pleasant outlook and the opportunity for a straightforward chain-free purchase.

Tenure: Freehold
Council Tax Band: E
EPC Rating: To be confirmed









Looking to Sell or Let your current home?



Scan me to request your FREE Instant Online Valuation!

Fresh
FINANCIAL



Sign up for FREE mortgage monitoring today, giving you peace of mind you are on the right deal, every month.

We will compare your mortgage against thousands of deals and send you a monthly report.

Please note that mortgage monitoring does not constitute mortgage advice.

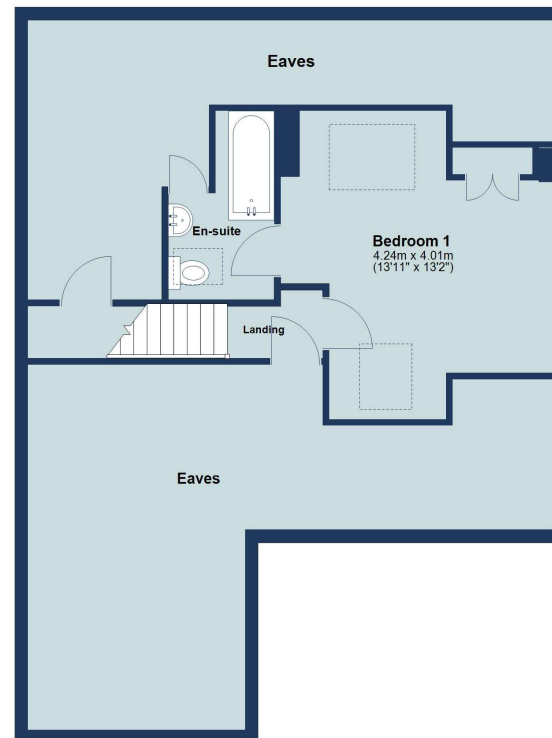
Ground Floor

Approx. 77.2 sq. metres (830.7 sq. feet)
(excluding Garage)



First Floor

Approx. 24.5 sq. metres (263.3 sq. feet)
(excluding Eaves, Eaves)



Total area: approx. 101.6 sq. metres (1094.1 sq. feet)

Floor plan is for marketing purposes only and is to be used as a guide.
Garage and eaves not included in the total floor area.
Plan produced using PlanUp.

IMPORTANT NOTICE: These particulars are for guidance only. Whilst every effort has been made to ensure the accuracy of the descriptions, plans, and measurements, these are not guaranteed, and they do not form part of any contract or tenancy. We have not tested any of the services, equipment, or fittings. No person in this firm's employment has the authority to make or give any representation or warranty in respect of the property. Interested parties should satisfy themselves as to the conditions of any such items considered material to their prospective purchase or tenancy and may wish to consult an independent advisor. It should not be assumed that any of the articles depicted in these particulars are included in the purchase or tenancy. You may download, store, and use the material for your personal use. You may not republish the material in any format without the consent of Bradford & Howley.

BRADFORD & HOWLEY
HARPENDEN | MARSHALSWICK | ST ALBANS

f @bradfordandhowley
ig @bradfordandhowley
in @bradford-howley
yt @bradfordhowley4660

tel 01727 898150
envelope stalbans@bradfordandhowley.com
location 8 Chequer Street, St Albans, Herts, AL1 3XZ