



**BRADFORD
& HOWLEY**
HARPENDEN | MARSHALSWICK | ST ALBANS

Magnolia Close, Park Street, AL2 2PP
Asking Price £880,000

Enjoying over 2,200 sq ft of thoughtfully arranged living space across three floors, this impressive FIVE BEDROOM four-reception, three-bathroom family home is situated in the ever-popular village of Park Street. Offering generous proportions, versatile rooms and a warm, contemporary feel, it is ideal for modern family life.

The property welcomes you via a front door into a useful vestibule, opening into a spacious and inviting entrance hall. From here, doors lead to a study overlooking the front—perfect for remote working—a separate family room, a practical utility room, and a guest WC. To the rear, the home truly comes into its own with an expansive open-plan living area, beautifully enhanced by Velux windows and wide bi-fold doors that open directly onto the rear garden. This bright and airy space flows seamlessly into the stylish kitchen, which offers ample storage and preparation space, and leads through to a well-sized playroom, creating the perfect hub for everyday family living and entertaining.

The first floor hosts four generous bedrooms. The principal bedroom benefits from its own en-suite shower room, while the remaining rooms are served by a modern family bathroom. All rooms enjoy good natural light and are well proportioned, offering flexibility for children, guests or additional workspaces. Stairs rise to the second floor, where a further

double bedroom enjoys its own shower room and extensive eaves storage, making it an ideal guest suite, teenager's retreat, or private home office.

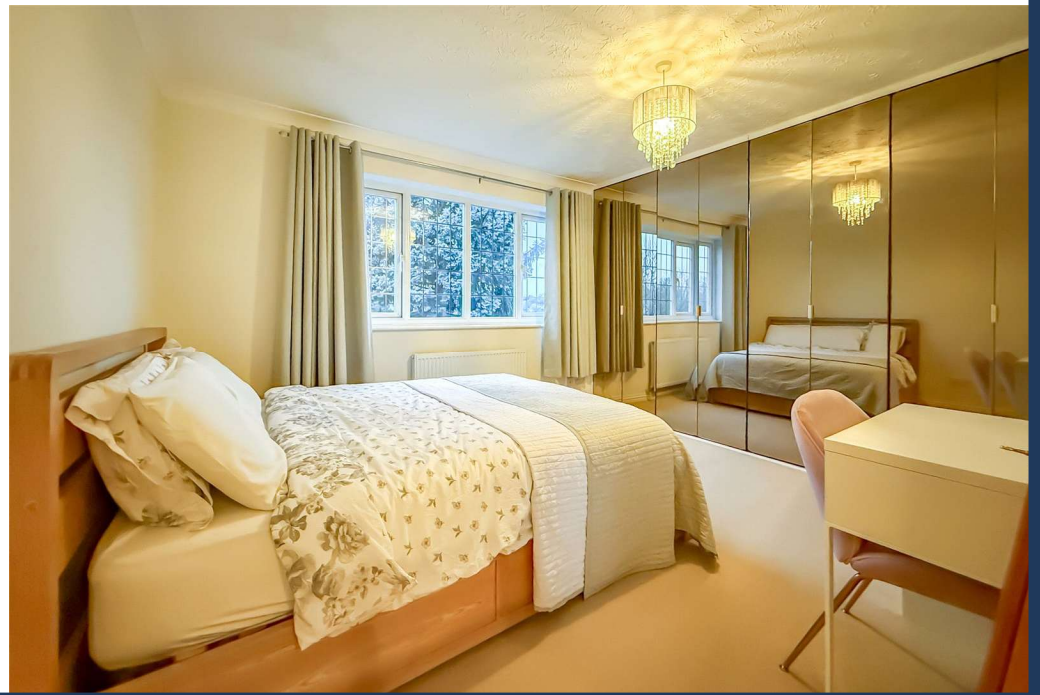
Outside, the rear garden provides a wonderful extension of the living space, featuring both lawn and paved areas for relaxation and play, along with a charming treehouse—a real treat for families with young children. To the front, a driveway offers off-street parking, adding to the home's convenience.

The property is superbly positioned within walking distance of How Wood Station, offering easy links into Watford Junction and then London. A local school on Spooners Drive, along with a nearby shopping parade, ensures everyday essentials are close at hand. For wider amenities, St Albans city centre and its mainline station—with fast services to London St Pancras—are only a short drive away. With excellent access to the major motorway networks, this location is ideal for commuters while still offering a strong sense of village community.

Tenure: Freehold
Council Tax Band: F
EPC Rating: C



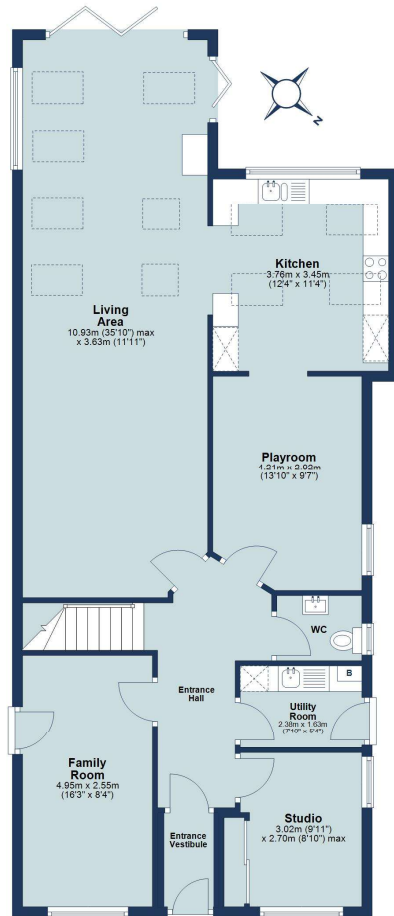






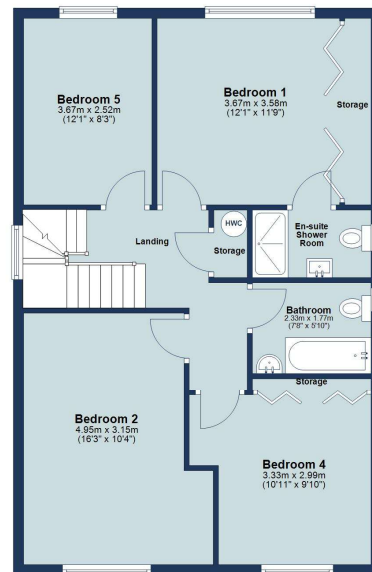
Ground Floor

Approx. 106.8 sq. metres (1149.7 sq. feet)



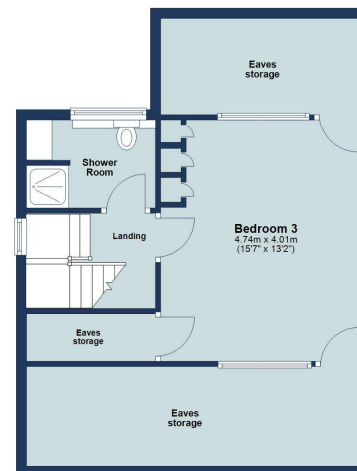
First Floor

Approx. 69.4 sq. metres (747.2 sq. feet)



Second Floor

Approx. 28.8 sq. metres (309.7 sq. feet)



Total area: approx. 205.0 sq. metres (2206.7 sq. feet)

Floor plan is for marketing purposes only and is to be used as a guide.
Eaves storage not included in the total floor area.
Plan produced using PlanUp.

IMPORTANT NOTICE: These particulars are for guidance only. Whilst every effort has been made to ensure the accuracy of the descriptions, plans, and measurements, these are not guaranteed, and they do not form part of any contract or tenancy. We have not tested any of the services, equipment, or fittings. No person in this firm's employment has the authority to make or give any representation or warranty in respect of the property. Interested parties should satisfy themselves as to the conditions of any such items considered material to their prospective purchase or tenancy and may wish to consult an independent advisor. It should not be assumed that any of the articles depicted in these particulars are included in the purchase or tenancy. You may download, store, and use the material for your personal use. You may not republish the material in any format without the consent of Bradford & Howley.

Looking to Sell or Let your current home?



Scan me to request your FREE Instant Online Valuation!

Fresh
FINANCIAL



Sign up for FREE mortgage monitoring today, giving you peace of mind you are on the right deal, every month.

We will compare your mortgage against thousands of deals and send you a monthly report.

Please note that mortgage monitoring does not constitute mortgage advice.

BRADFORD & HOWLEY
HARPENDEN | MARSHALSWICK | ST ALBANS

f @bradfordandhowley
ig @bradfordandhowley
in @bradford-howley
yt @bradfordhowley4660

tel 01727 898150
envelope stalbans@bradfordandhowley.com
location 8 Chequer Street, St Albans, Herts, AL1 3XZ