



**BRADFORD  
& HOWLEY**  
HARPENDE N | MARSHALSWICK | ST ALBANS

Villiers Crescent, St. Albans, AL4 9HY  
Guide Price £695,000

Situated within the highly sought after Jersey Farm area of St Albans, this attractive extended detached family home offers spacious and well-balanced accommodation, ideally suited to modern family living.

Occupying a desirable residential position, the property combines generous living space with excellent potential for buyers looking to establish themselves within one of the city's most popular family neighbourhoods.

The accommodation begins with a welcoming entrance hall leading through to the principal living areas. At the heart of the home is a superb open-plan arrangement of reception rooms, creating a bright and sociable environment perfect for both everyday family life and entertaining.

The flexible layout provides clearly defined areas for relaxing and dining, whilst large windows and doors allow natural light to flow throughout the space and provide pleasant views of the garden.

The kitchen/breakfast room is well appointed with ample storage and worktop space, together with room for informal dining, making it a practical and inviting hub of the home. A convenient guest cloakroom further enhances the functionality of the ground floor accommodation.

Upstairs, the property offers three well-proportioned bedrooms, all served by a family bathroom. The balanced layout provides comfortable accommodation for families, professional couples or those requiring additional space for home working.

Externally, the private rear garden offers a wonderful space for outdoor dining, entertaining and relaxation, providing a peaceful setting to enjoy throughout the year. To the front, the property benefits from a garage and off-street parking, ensuring both convenience and practicality for modern living.

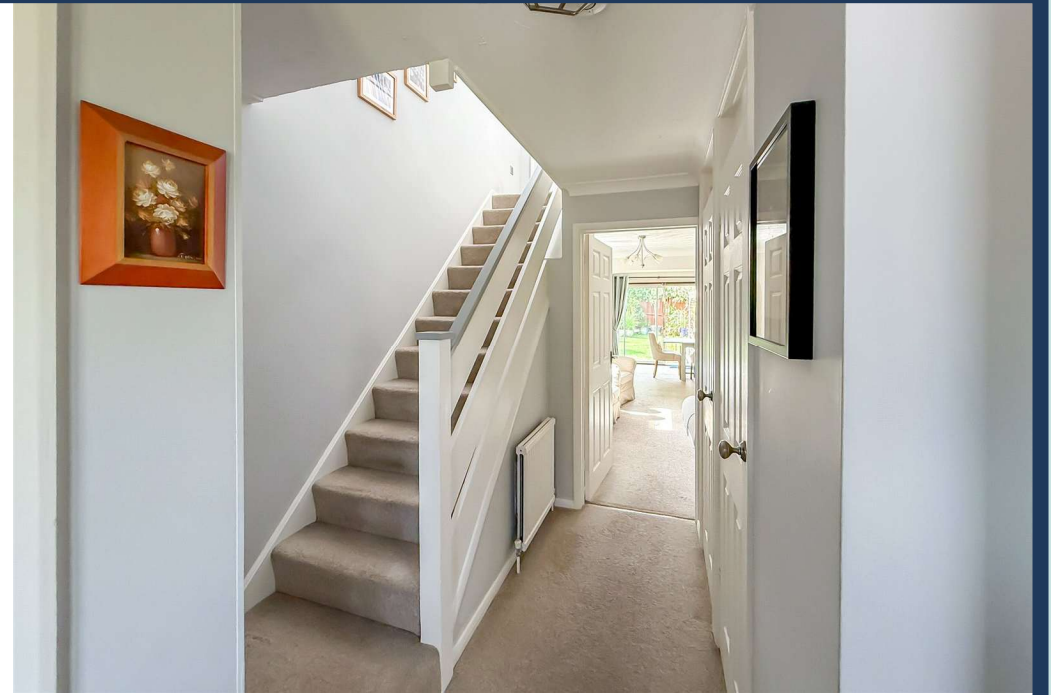
Jersey Farm remains one of St Albans' most desirable residential locations, renowned for its excellent local amenities, nearby green spaces and highly regarded schooling.

Combining spacious accommodation, a private garden and a detached setting, this is an excellent opportunity to acquire a superb family home in a prime location.

**Tenure: Freehold**  
**Council Tax Band: F**  
**EPC Rating: To be confirmed**

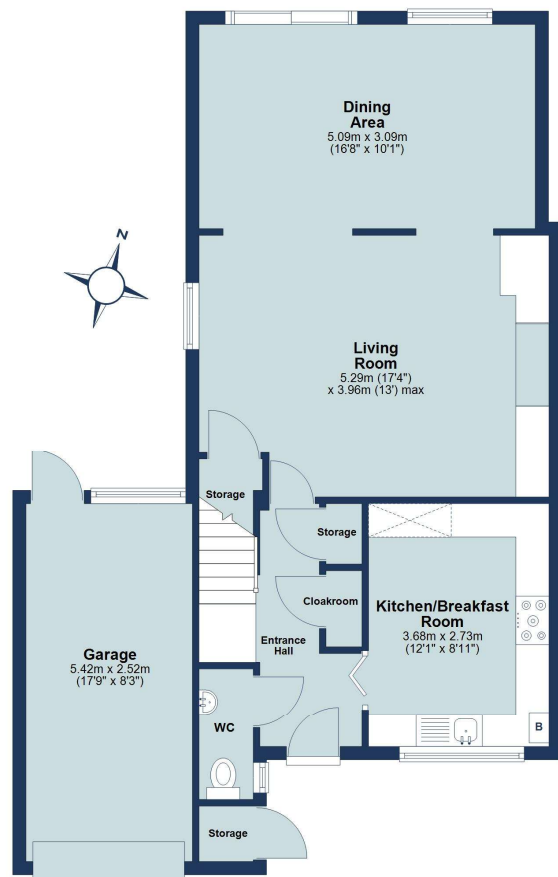




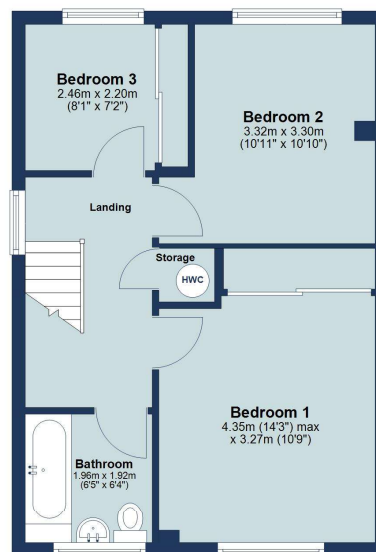




**Ground Floor**  
Approx. 72.8 sq. metres (783.3 sq. feet)



**First Floor**  
Approx. 41.6 sq. metres (447.7 sq. feet)



Total area: approx. 114.4 sq. metres (1231.0 sq. feet)

Floor plan is for marketing purposes only and is to be used as a guide.  
Garage is included in the total floor area.  
Plan produced using PlanUp.

IMPORTANT NOTICE: These particulars are for guidance only. Whilst every effort has been made to ensure the accuracy of the descriptions, plans, and measurements, these are not guaranteed, and they do not form part of any contract or tenancy. We have not tested any of the services, equipment, or fittings. No person in this firm's employment has the authority to make or give any representation or warranty in respect of the property. Interested parties should satisfy themselves as to the conditions of any such items considered material to their prospective purchase or tenancy and may wish to consult an independent advisor. It should not be assumed that any of the articles depicted in these particulars are included in the purchase or tenancy. You may download, store, and use the material for your personal use. You may not republish the material in any format without the consent of Bradford & Howley.

Looking to Sell or Let  
your current home?



Scan me to request your FREE  
Instant Online Valuation!

**Fresh**  
FINANCIAL



Sign up for FREE mortgage monitoring today,  
giving you peace of mind you are on the right  
deal, every month.

We will compare your mortgage against  
thousands of deals and send you a monthly  
report.

Please note that mortgage monitoring does not  
constitute mortgage advice.

**BRADFORD  
& HOWLEY**  
HARPENDEN | MARSHALSWICK | ST ALBANS

**f** @bradfordandhowley  
**ig** @bradfordandhowley  
**in** @bradford-howley  
**yt** @bradfordhowley4660

**tel** 01727 856999  
**envelope** marshalswick@bradfordandhowley.com  
**location** 5 The Quadrant, Marshalswick, St Albans, Herts, AL4 9RA