



**BRADFORD
& HOWLEY**
HARPENDEN | MARSHALSWICK | ST ALBANS

Lawrance Road, St. Albans, AL3 6ED
Guide Price £615,000

Set within a QUIET RESIDENTIAL turning, this attractive extended three-bedroom end-of-terrace home is well presented throughout and offers well-balanced accommodation ideally suited to MODERN FAMILY LIVING.

The heart of the home is the impressive kitchen and family room, which has been thoughtfully designed to create a bright, sociable and highly practical space. This area works perfectly for everyday family life as well as entertaining, providing ample room for cooking, dining and relaxing together. The extension adds a real sense of space and light, enhancing the overall flow of the ground floor.

In addition to the kitchen and family room, the property benefits from a separate lounge, offering a comfortable and more private space to unwind. This separation of living areas provides flexibility for families, home working or quieter evenings.

Upstairs, the home offers three well-proportioned bedrooms, all arranged to make excellent use of space and natural light. The accommodation is complemented by the property being well maintained and tastefully presented throughout, allowing buyers to move straight in with minimal work required.

Practical features include double glazed windows and gas central heating, ensuring comfort and efficiency year round. Externally, the property benefits from off street parking for two cars, a valuable feature in this type of residential setting.

The location is a particular highlight. Situated in a peaceful residential turning, the property enjoys a calm environment while remaining well located for local primary and secondary schools, making it an excellent choice for families seeking both convenience and a strong long-term setting.

Overall, this is a well presented and thoughtfully extended family home offering excellent living space, off street parking and a quiet yet well connected location.

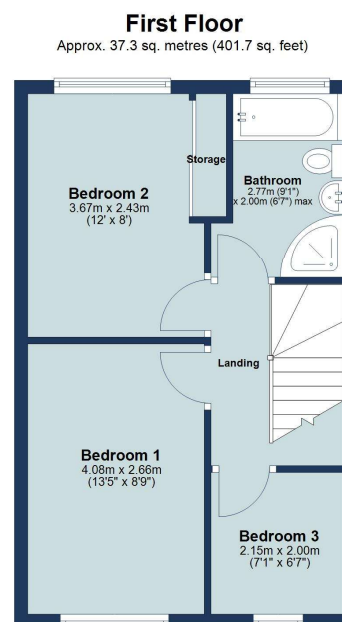
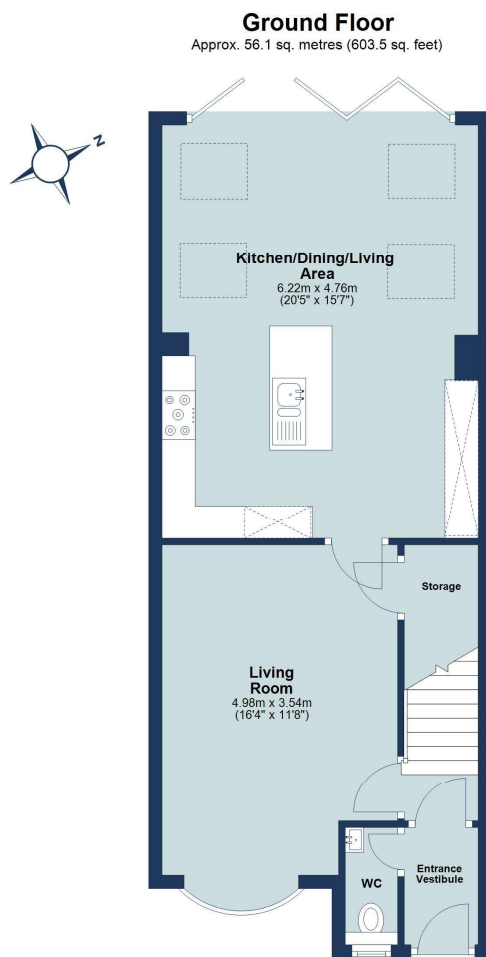
Tenure: Freehold
Council Tax Band: D
EPC Rating: C











Total area: approx. 93.4 sq. metres (1005.2 sq. feet)

Floor plan is for marketing purposes only and is to be used as a guide.
Plan produced using PlanUp.

IMPORTANT NOTICE: These particulars are for guidance only. Whilst every effort has been made to ensure the accuracy of the descriptions, plans, and measurements, these are not guaranteed, and they do not form part of any contract or tenancy. We have not tested any of the services, equipment, or fittings. No person in this firm's employment has the authority to make or give any representation or warranty in respect of the property. Interested parties should satisfy themselves as to the conditions of any such items considered material to their prospective purchase or tenancy and may wish to consult an independent advisor. It should not be assumed that any of the articles depicted in these particulars are included in the purchase or tenancy. You may download, store, and use the material for your personal use. You may not republish the material in any format without the consent of Bradford & Howley.

Looking to Sell or Let your current home?



Scan me to request your **FREE**
Instant Online Valuation!

Fresh
FINANCIAL



Sign up for **FREE** mortgage monitoring today, giving you peace of mind you are on the right deal, every month.

We will compare your mortgage against thousands of deals and send you a monthly report.

Please note that mortgage monitoring does not constitute mortgage advice.

BRADFORD & HOWLEY
HARPENDEN | MARSHALSWICK | ST ALBANS

f @bradfordandhowley
ig @bradfordandhowley
in @bradford-howley
yt @bradfordhowley4660

tel 01727 856999
envelope marshalswick@bradfordandhowley.com
location 5 The Quadrant, Marshalswick, St Albans, Herts, AL4 9RA

bradfordandhowley.com