



**BRADFORD  
& HOWLEY**  
HARPENDEN | MARSHALSWICK | ST ALBANS

Elizabeth Court, St. Albans, AL4 9JB  
Guide Price £440,000



A well-presented 2-bedroom house, thoughtfully updated by the current owners and located in a quiet and peaceful neighbourhood in Jersey Farm, St Albans.

Internally the property boasts a modern and stylish interior, creating a comfortable and homely atmosphere. The private garden provides a tranquil outdoor space perfect for relaxing or entertaining guests. With resident parking and a garage, there is ample space for your vehicles and storage needs.

The bright and airy living spaces offer a perfect blend of functionality and style, having been thoughtfully updated by the current owners, whilst large windows allow plenty of natural light to flow through this comfortable modern home.

Externally the property is conveniently situated close to local amenities, schools, and transport links, making it an ideal location for families or professionals.

**Tenure: Freehold**  
**Council Tax Band: D**  
**EPC Rating: D**





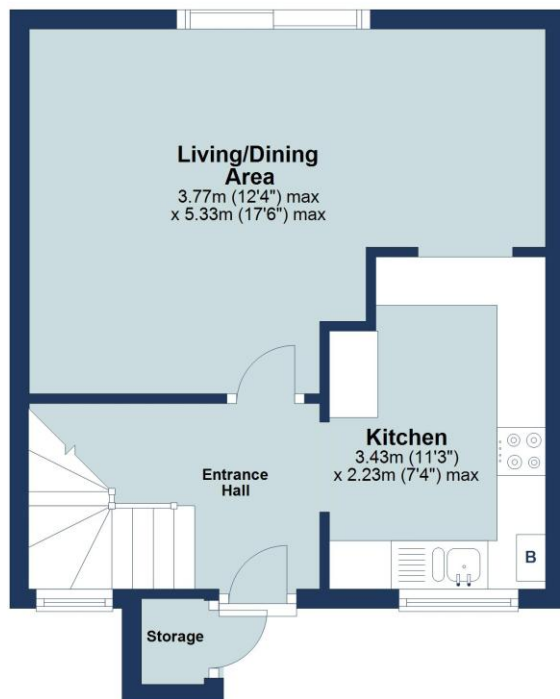






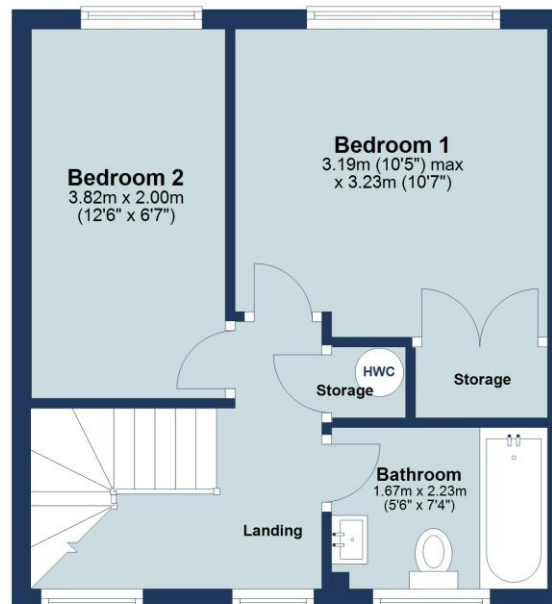
## Ground Floor

Approx. 31.5 sq. metres (339.0 sq. feet)



## First Floor

Approx. 30.9 sq. metres (332.1 sq. feet)



**Total area: approx. 62.4 sq. metres (671.1 sq. feet)**

Floor plan is for marketing purposes only and is to be used as a guide.  
Plan produced using PlanUp.

IMPORTANT NOTICE: These particulars are for guidance only. Whilst every effort has been made to ensure the accuracy of the descriptions, plans, and measurements, these are not guaranteed, and they do not form part of any contract or tenancy. We have not tested any of the services, equipment, or fittings. No person in this firm's employment has the authority to make or give any representation or warranty in respect of the property. Interested parties should satisfy themselves as to the conditions of any such items considered material to their prospective purchase or tenancy and may wish to consult an independent advisor. It should not be assumed that any of the articles depicted in these particulars are included in the purchase or tenancy. You may download, store, and use the material for your personal use. You may not republish the material in any format without the consent of Bradford & Howley.

Looking to Sell or Let  
your current home?



Scan me to request your **FREE**  
Instant Online Valuation!

**Fresh**  
FINANCIAL



Sign up for **FREE** mortgage monitoring today,  
giving you peace of mind you are on the right  
deal, every month.

We will compare your mortgage against  
thousands of deals and send you a monthly  
report.

Please note that mortgage monitoring does not  
constitute mortgage advice.

**BRADFORD  
& HOWLEY**  
HARPENDEN | MARSHALSWICK | ST ALBANS

**f** @bradfordandhowley  
**@** @bradfordandhowley  
**in** @bradford-howley  
**▶** @bradfordhowley4660

**☎** 01727 856999  
**✉** marshalswick@bradfordandhowley.com  
**📍** 5 The Quadrant, Marshalswick, St Albans, Herts, AL4 9RA

bradfordandhowley.com