



**BRADFORD  
& HOWLEY**  
HARPENDEN | MARSHALSWICK | ST ALBANS

**Beverley Gardens, Jersey Farm, AL4 9BJ**  
**Guide Price £535,000**



For sale with NO UPPER CHAIN is this beautifully presented THREE BEDROOM family home, ideally positioned in the highly sought-after residential area of Jersey Farm, St Albans just a short walk from the outstanding Sandringham School.

This bright and spacious property has been lovingly maintained by the current owners and offers a wonderful blend of modern living and practical design, making it an ideal choice for growing families or those looking to settle in a well-connected yet peaceful location.

Upon entering, you're welcomed into a stylish open plan living and dining area that creates an immediate sense of space and comfort. With natural light, this versatile space is perfect for everyday living as well as entertaining family and friends.

The living area extends into a delightful conservatory, which provides direct access to the rear garden a tranquil outdoor space, ideal for relaxing, playing with children, or enjoying summer barbecues. The kitchen is well-appointed with modern fittings, offering everything needed to prepare delicious meals with ease.

Upstairs, you'll find three well-proportioned bedrooms and a family bathroom, all presented in excellent decorative order, ready for immediate occupation.

Additional benefits include a garage and off-street parking, ensuring convenience for busy households.

Jersey Farm is a popular location for families, thanks to its community feel, nearby green spaces, and proximity to highly regarded schools including Sandringham and Wheatfields.

A selection of local shops and amenities are just a short stroll away, while excellent transport links provide easy access to St Albans city centre, the mainline station, and surrounding areas.

This truly is a home that ticks all the boxes stylish, comfortable, and in a prime location. Early viewing is highly recommended.

**Tenure: Freehold**  
**Council Tax Band: D**  
**EPC Rating: D**











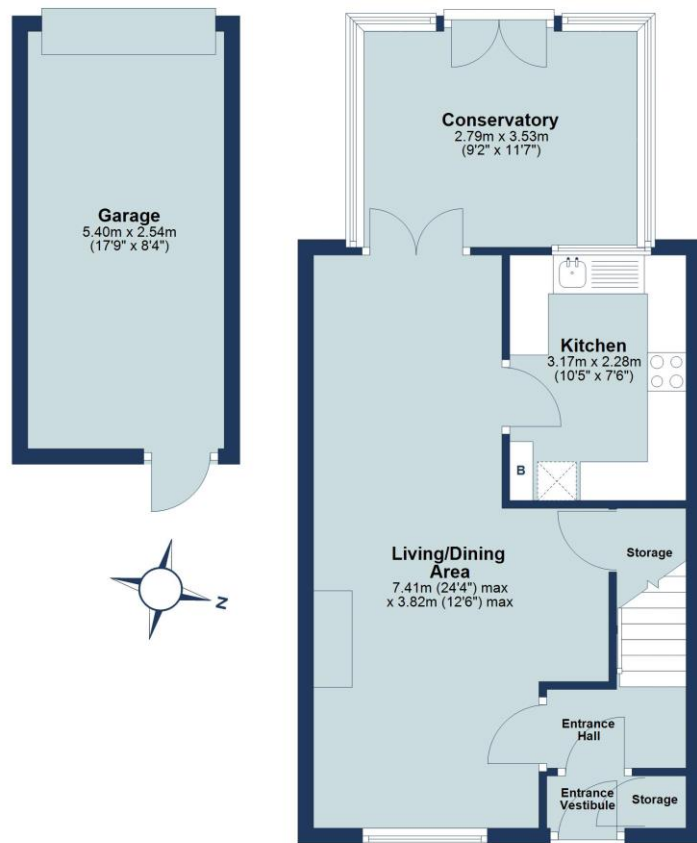






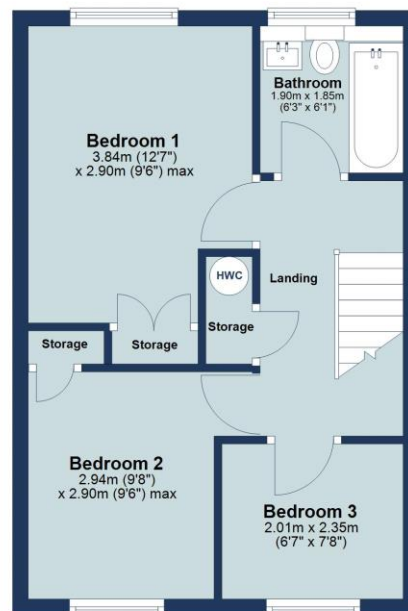
## Ground Floor

Approx. 45.9 sq. metres (494.4 sq. feet)



## First Floor

Approx. 35.9 sq. metres (386.9 sq. feet)



Total area: approx. 81.9 sq. metres (881.4 sq. feet)

Floor plan is for marketing purposes only and is to be used as a guide.  
Garage not included in total floor area.  
Plan produced using PlanUp.

IMPORTANT NOTICE: These particulars are for guidance only. Whilst every effort has been made to ensure the accuracy of the descriptions, plans, and measurements, these are not guaranteed, and they do not form part of any contract or tenancy. We have not tested any of the services, equipment, or fittings. No person in this firm's employment has the authority to make or give any representation or warranty in respect of the property. Interested parties should satisfy themselves as to the conditions of any such items considered material to their prospective purchase or tenancy and may wish to consult an independent advisor. It should not be assumed that any of the articles depicted in these particulars are included in the purchase or tenancy. You may download, store, and use the material for your personal use. You may not republish the material in any format without the consent of Bradford & Howley.

Looking to Sell or Let  
your current home?



Scan me to request your FREE  
Instant Online Valuation!

**Fresh**  
FINANCIAL



Sign up for FREE mortgage monitoring today,  
giving you peace of mind you are on the right  
deal, every month.

We will compare your mortgage against  
thousands of deals and send you a monthly  
report.

Please note that mortgage monitoring does not  
constitute mortgage advice.

**BRADFORD  
& HOWLEY**  
HARPENDEN | MARSHALSWICK | ST ALBANS

**f** @bradfordandhowley  
**@** @bradfordandhowley  
**in** @bradford-howley  
**▶** @bradfordhowley4660

**☎** 01727 856999  
**✉** marshalswick@bradfordandhowley.com  
**📍** 5 The Quadrant, Marshalswick, St Albans, Herts, AL4 9RA

bradfordandhowley.com