



**BRADFORD  
& HOWLEY**  
HARPENDEN | MARSHALSWICK | ST ALBANS

Front Street, Slip End, LU1 4BS  
Guide Price £395,000

A well-presented three-bedroom semi-detached home, ideally situated in the highly sought-after village of Slip End, offering a wonderful balance of countryside charm and everyday convenience.

This attractive property has been carefully maintained by the current owners, creating a comfortable and welcoming home, while still providing excellent scope for modernisation and further enhancement to suit individual tastes.

The accommodation is well-proportioned and thoughtfully arranged throughout. The ground floor features two versatile reception rooms, ideal for both formal entertaining and relaxed family living, along with a front extension that adds valuable additional space and enhances the overall layout.

The kitchen and living areas offer plenty of potential for reconfiguration, allowing future owners to create a more open-plan design if desired, subject to the necessary planning permissions (STPP).

Upstairs, the property continues to impress with three good-sized bedrooms and a family bathroom, making it well-suited to growing families, first-time buyers, or those looking to upsize.

Each room benefits from natural light, contributing to a bright and airy feel throughout the home.

Externally, the property occupies a generous plot and enjoys a particularly attractive position backing directly onto open farmland. This provides a peaceful, uninterrupted outlook and a strong sense of privacy, rarely found in properties of this type.

The garden offers plenty of space for outdoor entertaining, gardening, or potential landscaping projects.

Additional benefits include a detached garage and ample off-street parking, catering comfortably for multiple vehicles and adding further practicality to the home.

With its desirable semi-rural location, spacious accommodation, and significant potential for improvement or extension, this property represents a fantastic opportunity for buyers seeking to create a long-term family home tailored to their own style and needs.

**Tenure: Freehold**  
**Council Tax Band: D**  
**EPC Rating: TBC**









Looking to Sell or Let  
your current home?



Scan me to request your FREE  
Instant Online Valuation!

**Fresh**  
FINANCIAL



Sign up for FREE mortgage monitoring today,  
giving you peace of mind you are on the right  
deal, every month.

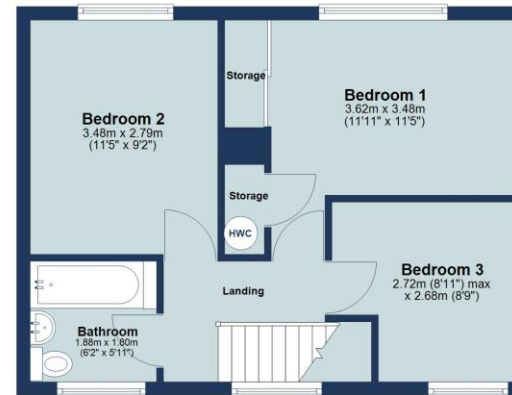
We will compare your mortgage against  
thousands of deals and send you a monthly  
report.

Please note that mortgage monitoring does not  
constitute mortgage advice.

**Ground Floor**  
Approx. 52.7 sq. metres (567.2 sq. feet)  
(excluding Garage, Greenhouse)



**First Floor**  
Approx. 38.8 sq. metres (417.2 sq. feet)



Total area: approx. 91.5 sq. metres (984.4 sq. feet)

Floor plan is for marketing purposes only and is to be used as a guide.  
Garage and greenhouse not included in the total floor area.  
Plan produced using PlanUp.

IMPORTANT NOTICE: These particulars are for guidance only. Whilst every effort has been made to ensure the accuracy of the descriptions, plans, and measurements, these are not guaranteed, and they do not form part of any contract or tenancy. We have not tested any of the services, equipment, or fittings. No person in this firm's employment has the authority to make or give any representation or warranty in respect of the property. Interested parties should satisfy themselves as to the conditions of any such items considered material to their prospective purchase or tenancy and may wish to consult an independent advisor. It should not be assumed that any of the articles depicted in these particulars are included in the purchase or tenancy. You may download, store, and use the material for your personal use. You may not republish the material in any format without the consent of Bradford & Howley.

**BRADFORD  
& HOWLEY**  
HARPENDEN | MARSHALSWICK | ST ALBANS

**f** @bradfordandhowley  
**@**bradfordandhowley  
**in** @bradford-howley  
**▶** @bradfordhowley4660

**☎** 01582 769966  
**✉** harpenden@bradfordandhowley.com  
**📍** 42 High Street, Harpenden, Herts, AL5 2SX

bradfordandhowley.com