



**BRADFORD
& HOWLEY**
HARPENDEN | MARSHALSWICK | ST ALBANS

Knowle Drive, Harpenden, AL5 1RW
Asking Price £575,000

Located within a quiet and sought-after cul-de-sac, this well-presented three-bedroom family home offers spacious and versatile accommodation, ideal for modern family living.

The property is entered via a welcoming entrance hall, which benefits from a convenient ground floor WC. Stairs rise to the first floor and there is useful built-in storage beneath.

A door leads through to the generously sized dual-aspect living room, a light and airy space perfect for both relaxing and entertaining, with doors opening directly onto the rear garden and allowing plenty of natural light to flow through.

Completing the ground floor is the kitchen, situated to the rear of the property and enjoying pleasant views over the garden, offering ample potential for further enhancement.

To the first floor, a spacious landing provides access to all three bedrooms and the family bathroom. The bedrooms are well proportioned and offer flexibility for family use, guest accommodation or home working, while the family bathroom serves the floor.

Externally, the property enjoys communal green space to the front, creating an open and attractive outlook.

There is also a single garage located en-bloc, providing secure parking or additional storage.

To the rear, the garden is mainly laid to lawn and bordered with an established variety of flowers, trees and shrubs, offering a pleasant outdoor space for families and keen gardeners alike.

Southdown local shops are easily accessible and within walking distance, as is a selection of well-regarded local schooling.

Harpenden town centre, with its wider range of shops, cafés, restaurants and leisure facilities, is also only a walk away, making this an excellent location for convenience and lifestyle.

Tenure: Freehold
Council Tax Band: D
EPC Rating: TBC



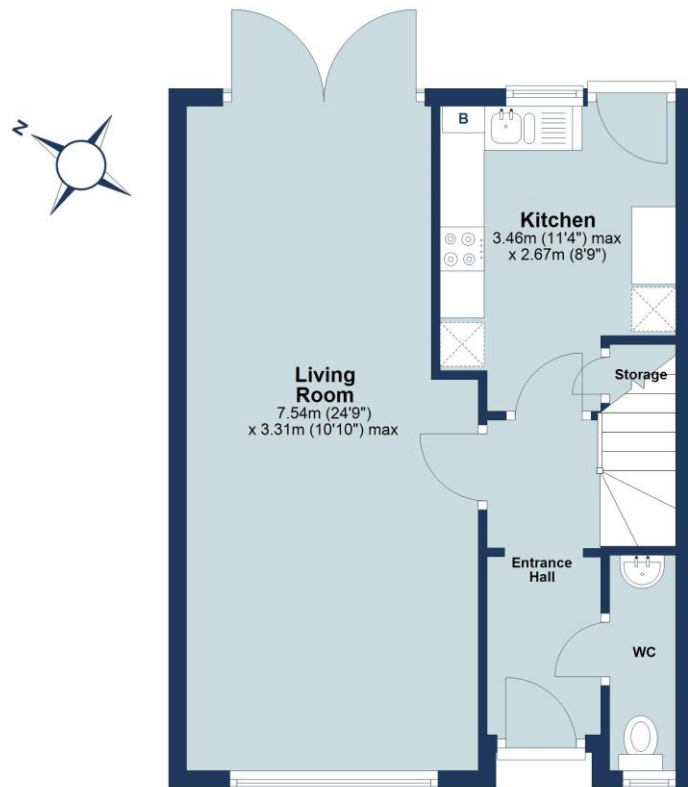






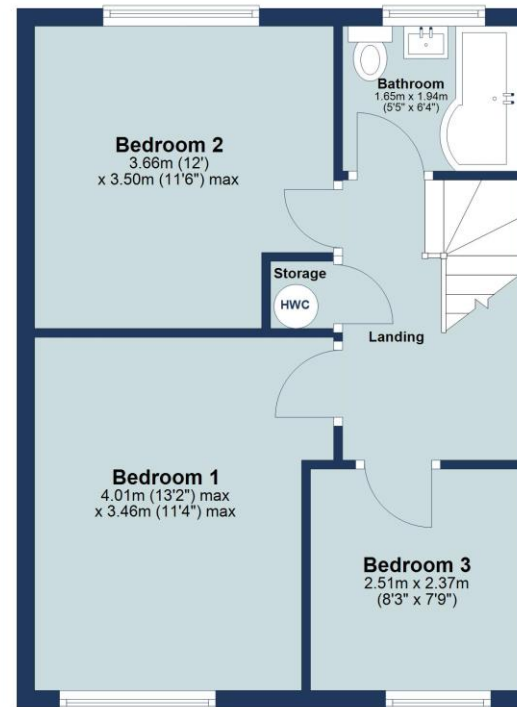
Ground Floor

Approx. 41.2 sq. metres (444.0 sq. feet)



First Floor

Approx. 41.6 sq. metres (448.0 sq. feet)



Total area: approx. 82.9 sq. metres (892.0 sq. feet)

Floor plan is for marketing purposes only and is to be used as a guide.
Plan produced using PlanUp.

IMPORTANT NOTICE: These particulars are for guidance only. Whilst every effort has been made to ensure the accuracy of the descriptions, plans, and measurements, these are not guaranteed, and they do not form part of any contract or tenancy. We have not tested any of the services, equipment, or fittings. No person in this firm's employment has the authority to make or give any representation or warranty in respect of the property. Interested parties should satisfy themselves as to the conditions of any such items considered material to their prospective purchase or tenancy and may wish to consult an independent advisor. It should not be assumed that any of the articles depicted in these particulars are included in the purchase or tenancy. You may download, store, and use the material for your personal use. You may not republish the material in any format without the consent of Bradford & Howley.

Looking to Sell or Let
your current home?



Scan me to request your **FREE**
Instant Online Valuation!

Fresh
FINANCIAL



Sign up for **FREE** mortgage monitoring today,
giving you peace of mind you are on the right
deal, every month.

We will compare your mortgage against
thousands of deals and send you a monthly
report.

Please note that mortgage monitoring does not
constitute mortgage advice.

**BRADFORD
& HOWLEY**
HARPENDEN | MARSHALSWICK | ST ALBANS

f @bradfordandhowley
@bradfordandhowley
in @bradford-howley
@bradfordhowley4660

01582 769966
harpenden@bradfordandhowley.com
42 High Street, Harpenden, Herts, AL5 2SX

bradfordandhowley.com