



**BRADFORD
& HOWLEY**
HARPENDEN | MARSHALSWICK | ST ALBANS

Dammersey Close, Markyate, AL3 8JS
Asking Price £675,000

Occupying an enviable corner plot, this deceptively spacious home offers generous accommodation, excellent outdoor amenities and far-reaching views, creating a property that is as practical as it is impressive.

The internal layout has been thoughtfully designed to maximise both space and light. At the heart of the home is a well-appointed kitchen and dining room, providing an ideal setting for everyday living and entertaining.

This sociable space comfortably accommodates family dining while also offering plenty of storage and preparation areas, making it a highly functional part of the home.

To the rear, the property enjoys elevated views across rooftops and open fields, creating an appealing sense of outlook and privacy. These views enhance the feeling of space and connection to the surrounding area and are a particular highlight from the roof terrace to the rear.

The accommodation is deceptively spacious, with well-proportioned rooms throughout. There are three generous double bedrooms, all offering excellent flexibility for families, guests or home working.

The principal bedroom benefits from a private en-suite, while the remaining bedrooms are served by a well-appointed family bathroom, ensuring comfort and convenience for all occupants.

Externally, the property continues to impress. The corner plot provides a sense of separation and space, while the rear of the property benefits from gated parking and twin garages, offering excellent storage and secure off-street parking. This combination is rarely found and will appeal to buyers requiring parking for multiple vehicles or additional storage.

A standout feature of the home is the swimming pool, which adds a real lifestyle element and creates an ideal setting for relaxation, recreation and entertaining. This feature enhances the outdoor space and offers a sense of privacy and enjoyment that elevates the overall appeal of the property.

Overall, this is a unique and well-balanced home that combines generous internal accommodation with outstanding external features.

With its spacious layout, attractive views, excellent parking and leisure facilities, the property offers an exceptional opportunity for buyers seeking space, versatility and a distinctive setting.

Tenure: Freehold
Council Tax Band: E
EPC Rating: C









Looking to Sell or Let your
current home?



Scan me to request your FREE
Instant Online Valuation!

Fresh
FINANCIAL



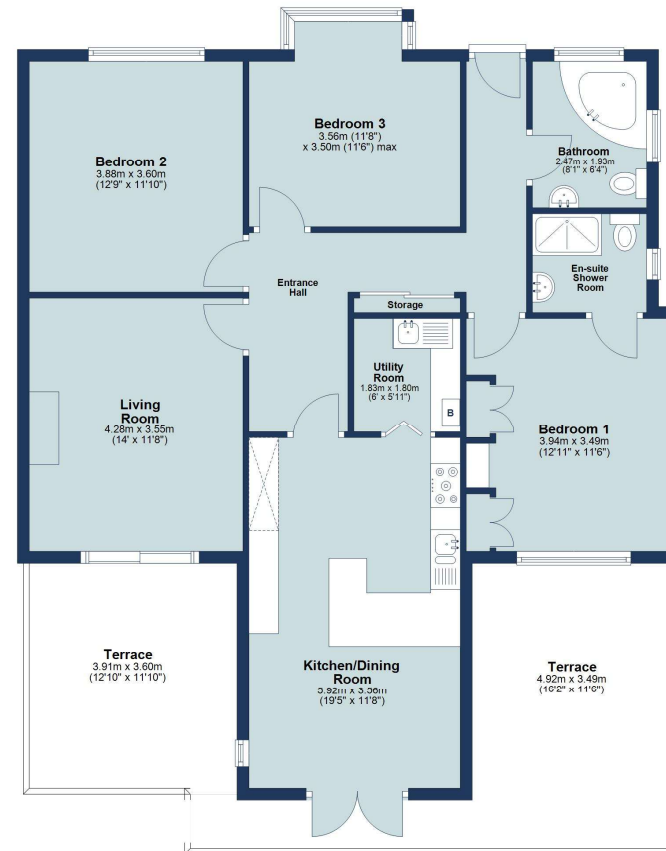
Sign up for FREE mortgage monitoring today, giving
you peace of mind you are on the right deal, every
month.

We will compare your mortgage against thousands of
deals and send you a monthly report.

Please note that mortgage monitoring does not
constitute mortgage advice.

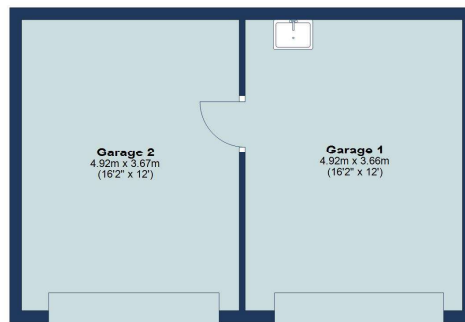
Ground Floor

Approx. 103.3 sq. metres (1112.1 sq. feet)



Undercroft

Approx. 36.6 sq. metres (393.7 sq. feet)



Total area: approx. 139.9 sq. metres (1505.8 sq. feet)

Floor plan is for marketing purposes only and is to be used as a guide.
Garages included in total floor area but not terraces.
Plan produced using PlanUp.

IMPORTANT NOTICE: These particulars are for guidance only. Whilst every effort has been made to ensure the accuracy of the descriptions, plans, and measurements, these are not guaranteed, and they do not form part of any contract or tenancy. We have not tested any of the services, equipment, or fittings. No person in this firm's employment has the authority to make or give any representation or warranty in respect of the property. Interested parties should satisfy themselves as to the conditions of any such items considered material to their prospective purchase or tenancy and may wish to consult an independent advisor. It should not be assumed that any of the articles depicted in these particulars are included in the purchase or tenancy. You may download, store, and use the material for your personal use. You may not republish the material in any format without the consent of Bradford & Howley.

**BRADFORD
& HOWLEY**
HARPENDEN | MARSHALSWICK | ST ALBANS

f @bradfordandhowley
ig @bradfordandhowley
in @bradford-howley
yt @bradfordhowley4660

tel 01582 769966
envelope harpenden@bradfordandhowley.com
location 42 High Street, Harpenden, Herts, AL5 2SX

bradfordandhowley.com