



**BRADFORD
& HOWLEY**
HARPENDEN | MARSHALSWICK | ST ALBANS

Bramble Close, Harpenden, AL5 4AN
Asking Price £647,500

Set within a peaceful CUL-DE-SAC LOCATION, this attractive home enjoys a quiet residential setting while remaining exceptionally well connected to Harpenden's excellent amenities.

The property is well positioned for SOUGHT AFTER LOCAL SCHOOLING making it particularly appealing to families. Well regarded primary and secondary schools are within comfortable walking distance, adding to the long-term desirability of the location.

Internally, the accommodation has been thoughtfully arranged to provide flexibility for modern living.

A notable feature is the inclusion of a ground floor study, which offers an ideal space for home working, reading or hobbies. This is complemented by a ground floor shower room, enhancing convenience for both day-to-day family life and visiting guests. The presence of shower facilities on the ground floor also offers adaptability for multi-generational living if required.

Upstairs, the property offers three good sized bedrooms, all well-proportioned and filled with natural light.

The layout provides comfortable and flexible accommodation, ideal for family living or those requiring additional space for guests or home working.

The property further benefits from a private driveway, providing valuable off-street parking within this established residential area and a well maintained rear garden and patio.

Beyond the immediate surroundings, the home is perfectly positioned for enjoying the lifestyle that Harpenden is known for. The town centre and mainline station are easily accessible, offering a wide range of shops, cafés and services, along with fast rail connections into London for commuters.

For those who enjoy the outdoors, the property is also close to lovely walks along the Nicky Line, providing scenic routes for walking, running and cycling through attractive countryside. This proximity to green space adds to the sense of calm and balance offered by the setting.

Overall, this is a well located and versatile home, combining a peaceful cul-de-sac position with excellent schooling, connectivity and access to open space. An excellent opportunity for families seeking both convenience and quality of life in Harpenden.

Tenure: Freehold
Council Tax Band: D
EPC Rating: D



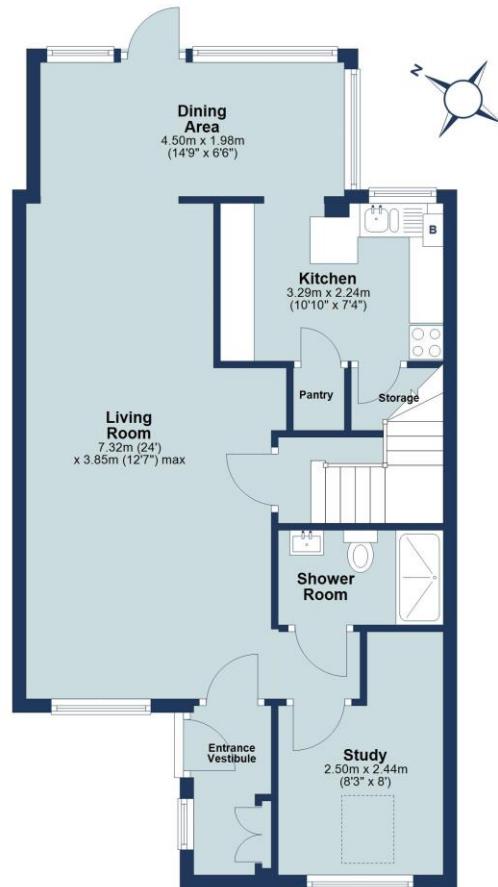






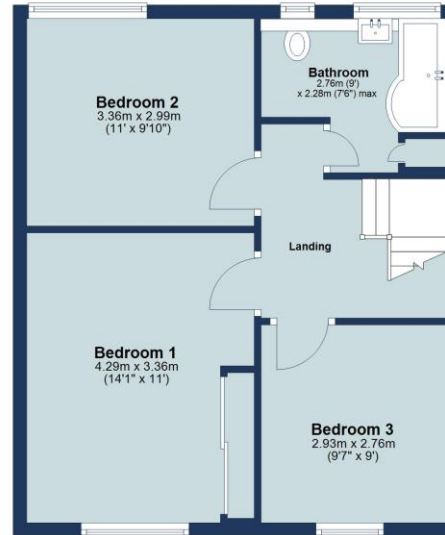
Ground Floor

Approx. 64.1 sq. metres (690.1 sq. feet)



First Floor

Approx. 46.3 sq. metres (498.8 sq. feet)



Total area: approx. 110.5 sq. metres (1188.9 sq. feet)

Floor plan is for marketing purposes only and is to be used as a guide.
Plan produced using PlanUp.

IMPORTANT NOTICE: These particulars are for guidance only. Whilst every effort has been made to ensure the accuracy of the descriptions, plans, and measurements, these are not guaranteed, and they do not form part of any contract or tenancy. We have not tested any of the services, equipment, or fittings. No person in this firm's employment has the authority to make or give any representation or warranty in respect of the property. Interested parties should satisfy themselves as to the conditions of any such items considered material to their prospective purchase or tenancy and may wish to consult an independent advisor. It should not be assumed that any of the articles depicted in these particulars are included in the purchase or tenancy. You may download, store, and use the material for your personal use. You may not republish the material in any format without the consent of Bradford & Howley.

Looking to Sell or Let
your current home?



Scan me to request your FREE
Instant Online Valuation!

Fresh
FINANCIAL



Sign up for FREE mortgage monitoring today,
giving you peace of mind you are on the right
deal, every month.

We will compare your mortgage against
thousands of deals and send you a monthly
report.

Please note that mortgage monitoring does not
constitute mortgage advice.

**BRADFORD
& HOWLEY**
HARPENDEN | MARSHALSWICK | ST ALBANS

f @bradfordandhowley
@ @bradfordandhowley
in @bradford-howley
▶ @bradfordhowley4660

☎ 01582 769966
✉ harpenden@bradfordandhowley.com
📍 42 High Street, Harpenden, Herts, AL5 2SX

bradfordandhowley.com