



HALE OFFICE:
212 ASHLEY ROAD, HALE,
CHESHIRE WA15 9SN
TEL: 0161 941 6633
FAX: 0161 941 6622
Email: hale@watersons.net

SALE OFFICE:
91-93 SCHOOL ROAD, SALE,
CHESHIRE M33 7XA
TEL: 0161 973 6688
FAX: 0161 976 3355
Email: sale@watersons.net



INDEPENDENT ESTATE AGENTS
PROPERTY SALES AND RENTALS



HALE OFFICE:
212 ASHLEY ROAD, HALE,
CHESHIRE WA15 9SN
TEL: 0161 941 6633
FAX: 0161 941 6622
Email: hale@watersons.net

SALE OFFICE:
91-93 SCHOOL ROAD, SALE,
CHESHIRE M33 7XA
TEL: 0161 973 6688
FAX: 0161 976 3355
Email: sale@watersons.net



INDEPENDENT ESTATE AGENTS
PROPERTY SALES AND RENTALS



24 Croft Road, Wilmslow, Cheshire, SK9 6JJ

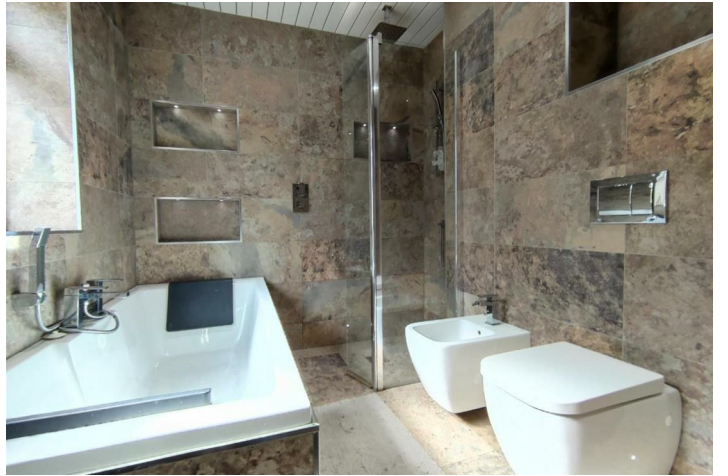
£3,500 PCM

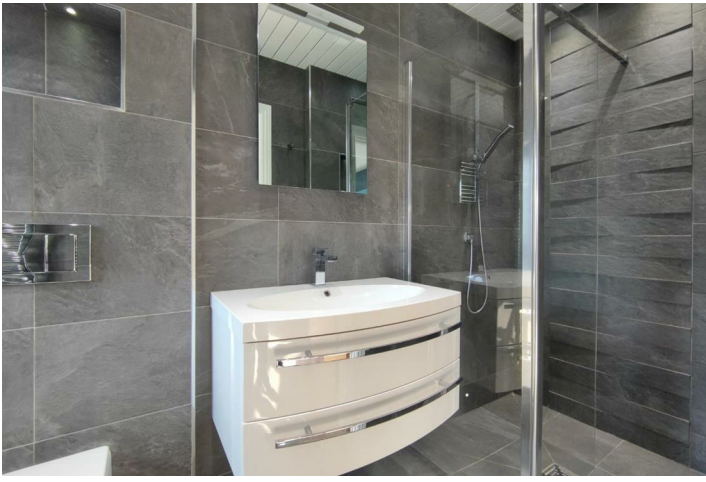
Directions

A STUNNING FIVE BEDROOM DETACHED LOCATED ON A POPULAR CUL DE SAC. Hall. Open Plan Living Dining Kitchen. Family Room. Sitting Room. Study. Ground Floor WC. Four Double Bedrooms plus One Single Bedroom. Modern Family Bathroom plus 2 En-Suite Shower Rooms. Tax Band E. UNFURNISHED. Available from 21st August.











Floorplans