



Leslie  
& Co.

ALTON COURT, COPLEY CLOSE, HANWELL, W7

Guide Price: **£650,000**



Leslie & Co





## About the property

What the owners love:

It is a brand-new property that requires no extra work, with a very spacious garden and shed. The triple-glazed windows and efficiency of the house were also attractive, as we like warm houses (we are from Singapore!). The kitchen has generous space, and so do all the bedrooms and bathrooms.

We have the best neighbours and always felt incredibly safe here. Summers were perfect for hosting, and the kids loved playing in the garden—even during winter!

What the agent says:

*A Modern Haven with Space, Style & Warmth*

Welcome to Alton Court, a stunning three-bedroom freehold home nestled within a quiet residential development in Hanwell, W7. Built in 2018, this spacious and energy-efficient (EPC B) property offers circa 1,200 sq. ft of beautifully designed living space—ideal for families, professionals, and anyone looking for a hassle-free home!



## Key features

- Three bedroom House
- Two Bathrooms
- Separate WC
- Allocated Parking
- Circa 1,200sqft
- Private Garden
- Bike Storage
- Newly Built in 2018
- EPC Rating: B
- Council Tax Band: E

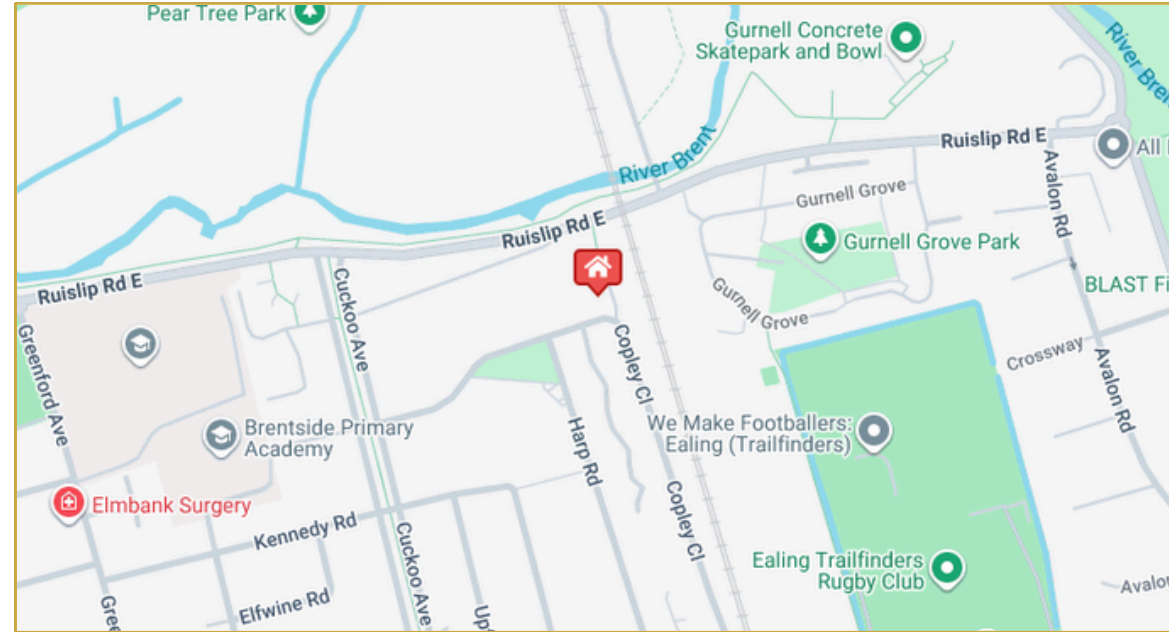
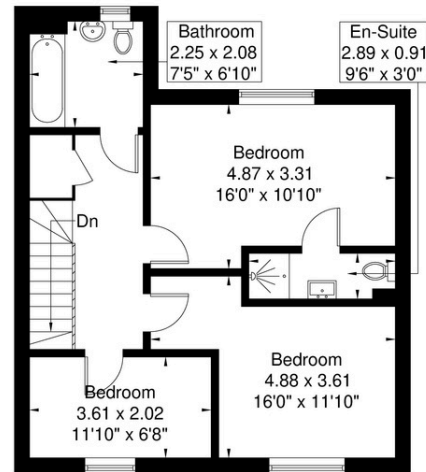
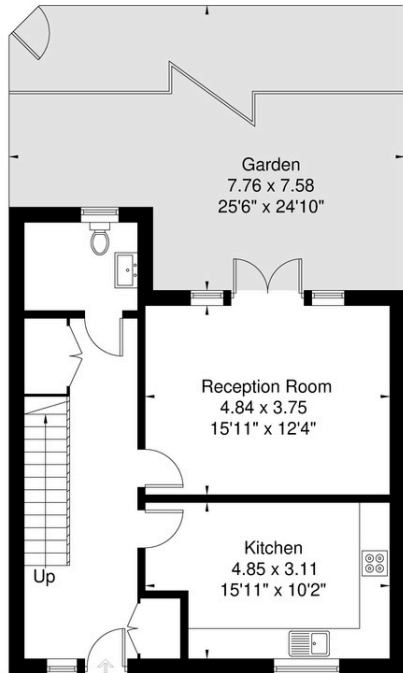
## Material information

- Tenure - Freehold
- Council Tax Amount - £2,613.77 (Band E)
- Guide Price - **£650,000**



## Alton Court

Approximate Gross Internal Area = 109 sq m / 1172 sq ft



### Key Facts for Buyers



### Buyer Information Pack

