



Leslie  
& Co.

LUDLOW ROAD, EALING, LONDON, W5

Guide Price: **£1,100,000**



Leslie & Co





## About the property

What the owners love:

What truly sets this home apart is the incredible sense of space, the versatile layout, and the fantastic views that greet you every day. The outdoor space has been perfect for relaxing and entertaining, making the property feel like a private retreat while keeping us completely connected to the local community.

Being just moments away from the charm of Pitshanger Lane, the Brentham Club for tennis and cricket, and some of Ealing's finest parks and excellent local schools has made living here an absolute joy. It's a wonderful neighbourhood with a community spirit that is incredibly hard to beat.

Why we would buy this home:

Nestled within the historic charm of the Brentham Garden Suburb, this stunning family home commands its environment from an imposing corner plot. Combining architectural grace with the warmth of a true sanctuary, the property stands as a rare opportunity to secure a residence in one of the area's most highly desirable and coveted locations.

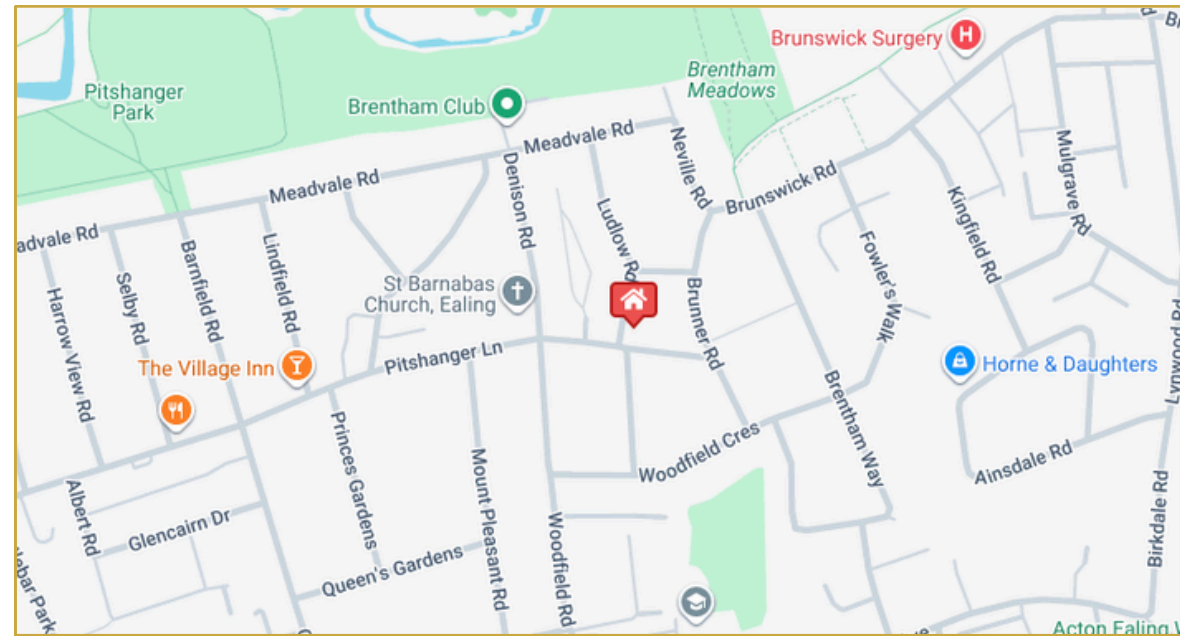
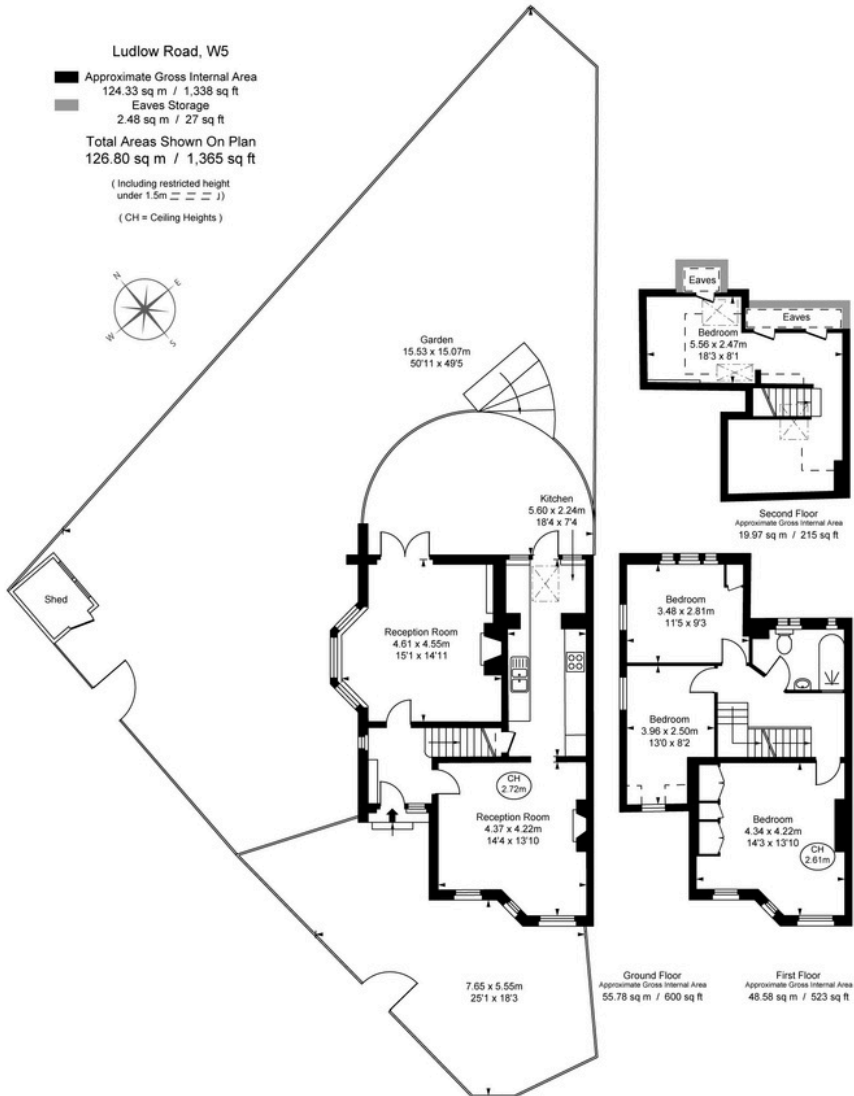


## Key features

- Stunning Brentham Garden Suburb family home
- Imposing corner plot
- Over 1300 sq ft of beautiful internal accommodation
- Highly desirable location
- Expansive sunny private garden
- Perfectly placed for exceptional schools
- Moments from the award-winning Pitshanger Lane
- Close to Ealing Broadway with its excellent amenities and transport links
- Buyer information pack available
- Secure with Reservation or Deposit Agreement

## Material information

- Tenure - Freehold
- Council Tax Amount - £3088.98 (Band F)
- Guide Price - **£1,100,000**



### Key Facts for Buyers



### Buyer Information Pack

