



Leslie  
& Co.

THE DENE, EALING, LONDON, W13

Guide Price: **£1,250,000**



Leslie & Co





## About the property

What the owner loves:

Our property is an exceptional residence combining luxury, comfort and character. Beautifully designed with exquisite attention to detail. This remarkable property offers refined living throughout. Our neighbours are so friendly, kind, respectful, supportive and always helpful.

Why we would buy this home:

It is rare to find a property that so perfectly balances cutting-edge design with idyllic family living. This staggering, architect-led residence is a masterclass in modern luxury, offering an exceptional lifestyle in one of West London's most desirable pockets. Other notable benefits include a manicured sun-trap private garden and generous driveway providing highly coveted off-street parking.

From the moment you arrive, the visionary design of this stunning family home is immediately apparent. Spanning approximately 1,800 square feet of truly luxurious accommodation, the residence offers expansive proportions tailor-made for both sophisticated entertaining and relaxed daily life.

## Key features

- Staggering architect-led family home
- Generous driveway for off-street parking
- Unparalleled spec throughout
- C. 1800 sq ft of luxurious accommodation
- Nestled between Pitshanger Park and Cleveland Park
- Moments from the award-winning Pitshanger Lane
- Buyer information pack available
- Close to Ealing Broadway with its excellent amenities and transport links
- Perfectly placed for exceptional schools
- Secure with Reservation or Deposit Agreement

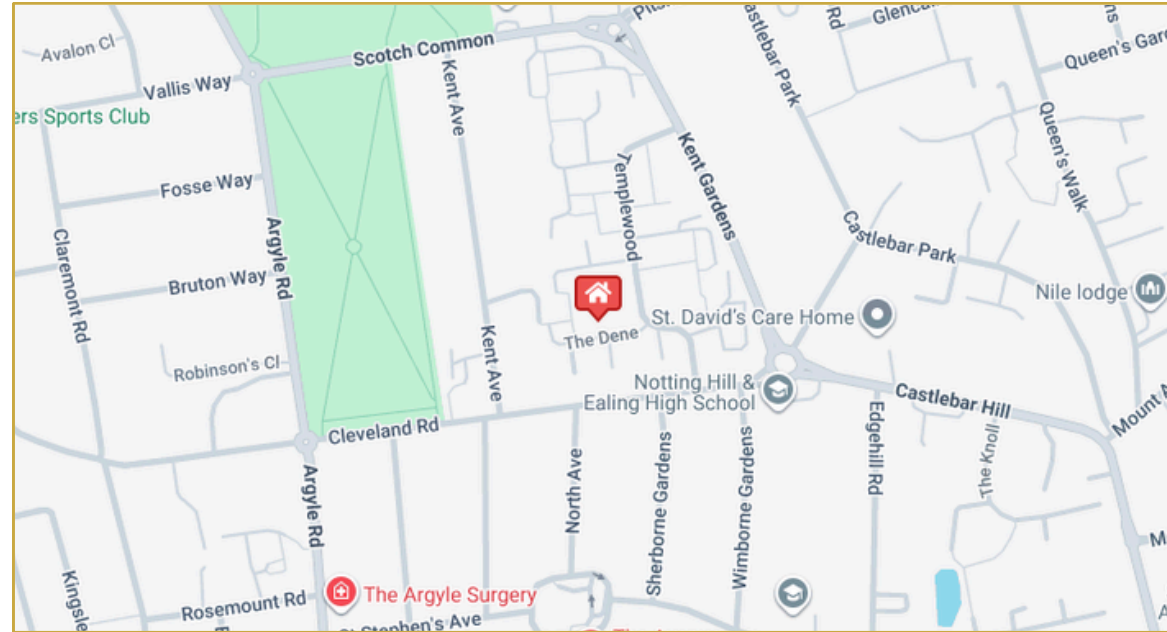
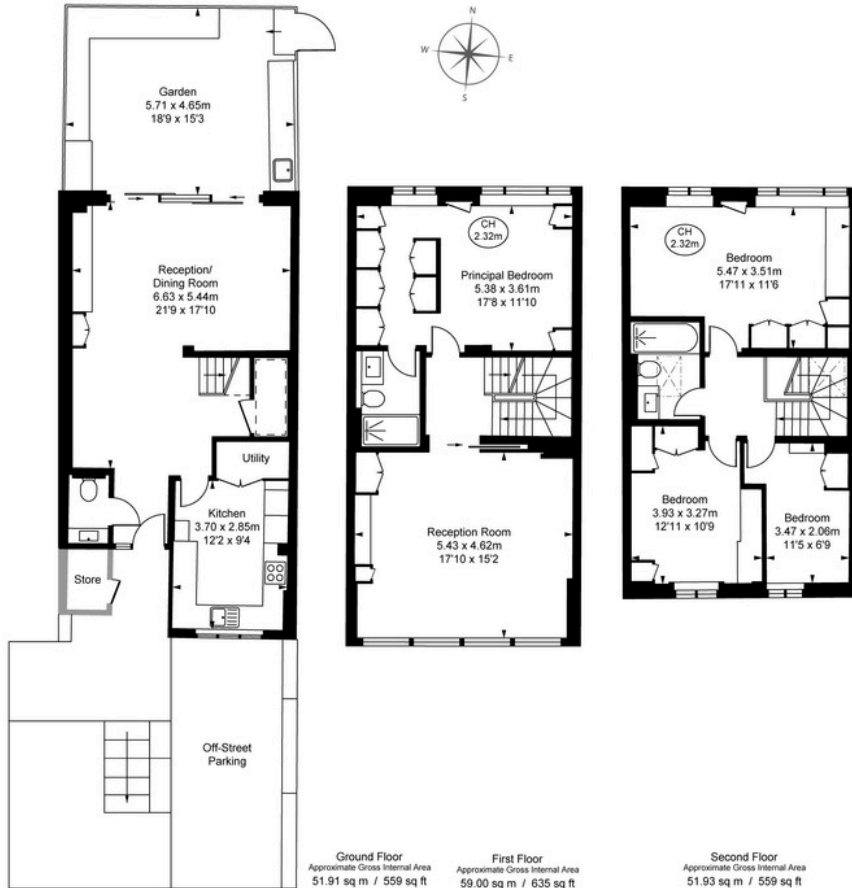
## Material information

- Tenure - Freehold
- Council Tax Amount - £3088.98 (Band F)
- Guide Price - **£1,250,000**



### The Dene, W13

- Approximate Gross Internal Area  
162.84 sq m / 1,753 sq ft
- Store  
1.53 sq m / 16 sq ft
- Total Areas Shown on Plan  
164.37 sq m / 1,769 sq ft
- (Including restricted height  
under 1.5m  $\square = = =$ )
- (CH = Ceiling Heights)



### Key Facts for Buyers



### Buyer Information Pack

