



Jodrell Road, Bow, E3 2LQ Offers In The Region Of £300,000



**** TWO BEDROOM 15TH FLOOR FLAT OPPOSITE VICTORIA PARK WITH AMAZING VIEWS OF THE CITY SKYLINE. SOUGHT AFTER LOCATION. CHAIN FREE ****

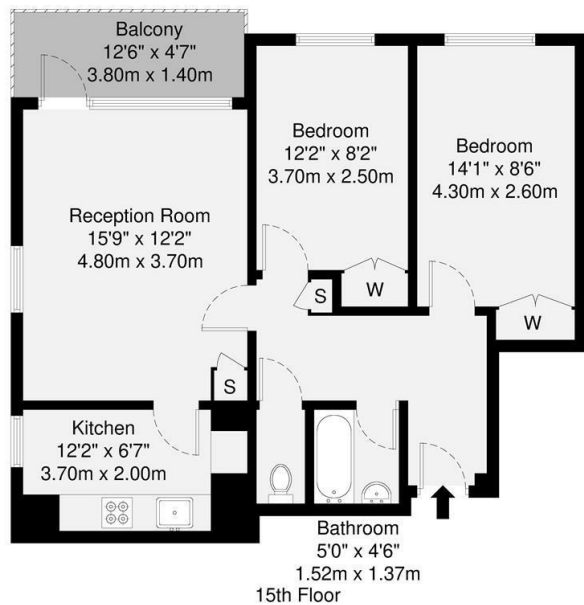
OC Homes are delighted to present to the sales market, this two bedroom apartment on the 15th floor of this ex local authority building in Jodrell Road, E3. The property boasts incredible views over Victoria Park and of the City skyline from its private balcony and is ideal for a first time buyer or buy to let investor due to its superb location close to a number of local amenities and transport links.

Accommodation comprises; a bright and spacious reception room with semi open plan kitchen, two double bedrooms, and three piece bathroom suite. The property is located by a number of local amenities, including shops, bars and restaurants and is across the road from the popular Victoria Park. To arrange a viewing please call the OC Homes Sales team.

Viewing

Please contact our OC Homes Leyton Office on 02085561212 if you wish to arrange a viewing appointment for this property or require further information.

- 15TH FLOOR WITH STUNNING VIEWS OVER VICTORIA PARK
- LOTS OF LOCAL AMENITIES
- EXCELLENT TRANSPORT LINKS
- 24 HOUR CONCIERGE SERVICE
- CASH BUYERS PREFERRED
- SOUGHT AFTER LOCATION
- IDEAL FIRST TIME BUY OR INVESTMENT
- CHAIN FREE



GROSS INTERNAL AREA (GIA)
The total area of the property.
62.7 sq m / 674 sq ft

TOTAL STORAGE SPACE
Storage and wardrobe total area.
1.9 sq m / 20 sq ft

EXTERNAL FEATURES
Climax, Heating, Storage, Translucent etc.
5.3 sq m / 57 sq ft

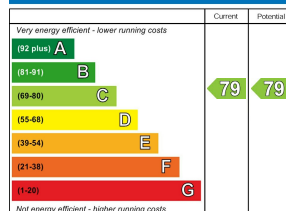
RESTRICTED HEAD HEIGHT
Limited one area under 2.0m.
0.0 sq m / 0.0 sq ft

Disclaimer: Floorplan measurements are approximate and are for illustrative purposes only. While we do not doubt the floorplan accuracy and completeness, you or your advisors should conduct a careful, independent investigation of the property in respect of monetary valuation.

Maison VUE

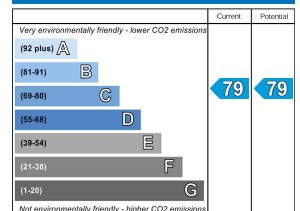


Energy Efficiency Rating

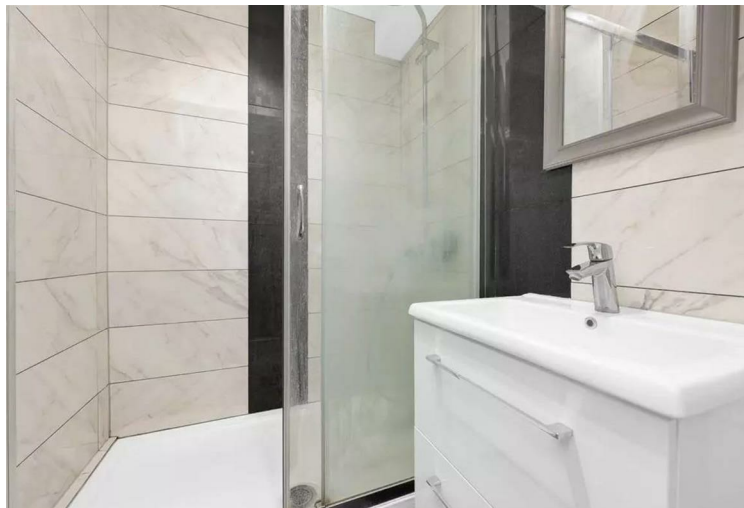


England & Wales EU Directive 2002/91/EC

Environmental Impact (CO₂) Rating



England & Wales EU Directive 2002/91/EC



These particulars, whilst believed to be accurate are set out as a general outline only for guidance and do not constitute any part of an offer or contract. Intending purchasers should not rely on them as statements of representation of fact, but must satisfy themselves by inspection or otherwise as to their accuracy. No person in this firm's employment has the authority to make or give any representation or warranty in respect of the property.