



Epsom Road, Seven Kings, IG3 8QP Offers In Excess Of £550,000



**** GREAT SIZE BUNGALOW IN SOUGHT AFTER LOCATION IN SEVEN KINGS. SUPERBLY PRESENTED THROUGHOUT WITH OFF STREET PARKING & GARAGE - CHAIN FREE ****

OC Homes are delighted to offer to the market, this well presented two bedroom bungalow on the charming Epsom Road just by Seven Kings Park. This delightful detached bungalow offers a perfect blend of comfort and convenience. Spanning an impressive 1,171 square feet, the property boasts a well-designed layout that is ideal for both relaxation and entertaining.

Upon entering, you are welcomed into a spacious reception room, which serves as the heart of the home. This inviting space is perfect for hosting friends and family or simply enjoying a quiet evening in. The bungalow features two generously sized bedrooms, providing ample space for rest and privacy. Each room is filled with natural light, creating a warm and welcoming atmosphere.

The property also includes a well-appointed bathroom, designed for both functionality and comfort. The layout of the bungalow ensures that every inch of space is utilised effectively, making it a practical choice for a variety of lifestyles.

Situated in a desirable location, this bungalow is conveniently close to local amenities, schools, and transport links, making it an excellent choice for families and professionals alike. The surrounding area offers a pleasant community feel, with parks and recreational facilities nearby.

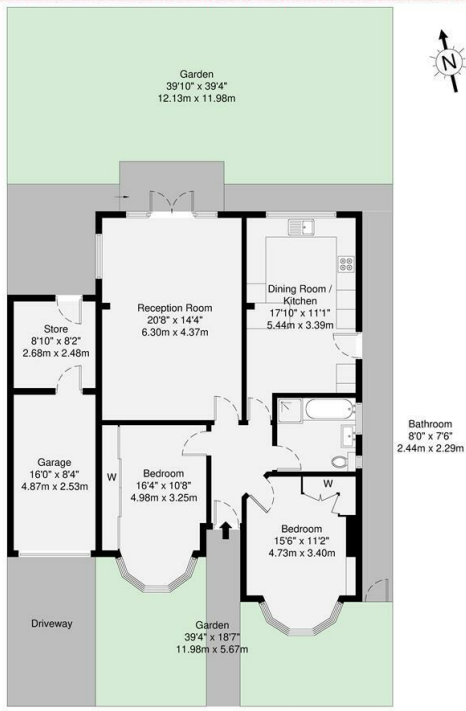
In summary, this detached bungalow on Epsom Road presents a wonderful opportunity for those seeking a comfortable and spacious home in Seven Kings. With its appealing features and prime location, it is sure to attract interest from a range of potential buyers. Call the OC Homes sales team now and do not miss the chance to make this charming property your own.

- 2 BEDROOM BUNGALOW
- OVER 1100 SQ FT
- OFF STREET PARKING & GARAGE
- EXCELLENT CONDITION THROUGHOUT
- LOTS OF LOCAL AMENITIES
- LOCATED BY SEVEN KINGS PARK
- IDEAL FAMILY HOME
- CHAIN FREE

Viewing

Please contact our OC Homes Leyton Office on 02085561212 if you wish to arrange a viewing appointment for this property or require further information.





GROSS INTERNAL AREA (GIA)
108.8 sq m / 1171 sq ft

TOTAL STORAGE SPACE
Storage and wardrobe included
3.1 sq m / 33 sq ft

EXTERNAL FEATURES
Double Glazing, Fenced, Transoms etc.
213.2 sq m / 2294 sq ft

RESTRICTED HEAD HEIGHT
Landing area less than 2.0m
0.0 sq m / 0.0 sq ft

Disclaimer: Floorplan measurements are approximate and are for illustrative purposes only. While we do not doubt the floorplan accuracy and completeness, you or your advisors should conduct a careful, independent investigation of the property in respect of monetary valuation.

Maison VUE



| Energy Efficiency Rating | |
|--------------------------|-----------|
| Current | Potential |
| 52 | 81 |

Very energy efficient - lower running costs

Not energy efficient - higher running costs

England & Wales EU Directive 2002/91/EC

| Environmental Impact (CO ₂) Rating | |
|--|-----------|
| Current | Potential |
| 52 | 80 |

Very environmentally friendly - lower CO₂ emissions

Not environmentally friendly - higher CO₂ emissions

England & Wales EU Directive 2002/91/EC



These particulars, whilst believed to be accurate are set out as a general outline only for guidance and do not constitute any part of an offer or contract. Intending purchasers should not rely on them as statements of representation of fact, but must satisfy themselves by inspection or otherwise as to their accuracy. No person in this firm's employment has the authority to make or give any representation or warranty in respect of the property.