



## Ferguson Court, Gidea Park, RM2 6RJ

### £1,600 Per Calendar Month



**\*\* WELL PRESENTED TWO BEDROOM APARTMENT WITH COMMUNAL GARDEN IN GIDEA PARK \*\***

OC Homes are delighted to present to the Lettings market this beautifully presented two bedroom first floor apartment within this quiet development situated within walking distance to Gidea Park Station. The property boasts lots of natural light and is finished to a very good standard throughout having been recently renovated. Accommodation comprises; bright and spacious reception room, modern fitted kitchen, two well proportioned double bedrooms and a three piece bathroom suite. There is also access to a sizeable communal garden for residents within the block.

The property is situated in a sought after location offering easy access to local amenities including Gidea Park Station (Elizabeth Line, direct line to Liverpool Street in 30 mins), a choice of bars, restaurants and shops within short walking distance, as well as a David Lloyd's Leisure Centre, and some outstanding local schools. To arrange a viewing please call the OC Homes Lettings team.

AVAILABLE 25/02/2026

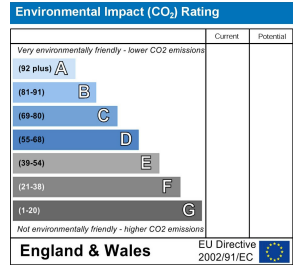
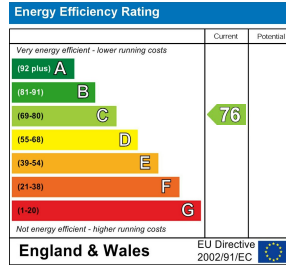
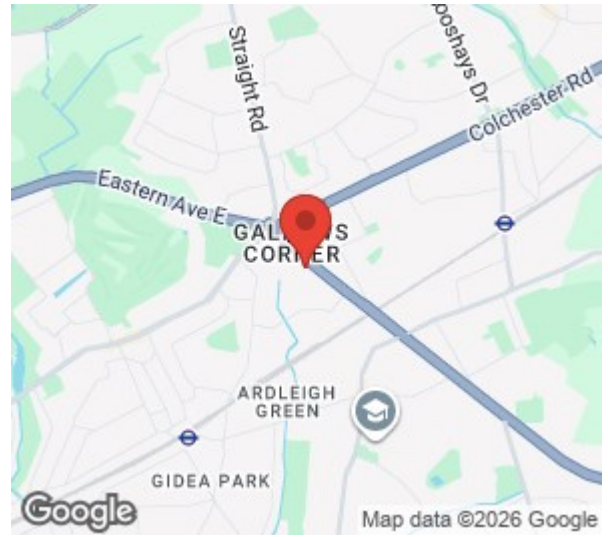
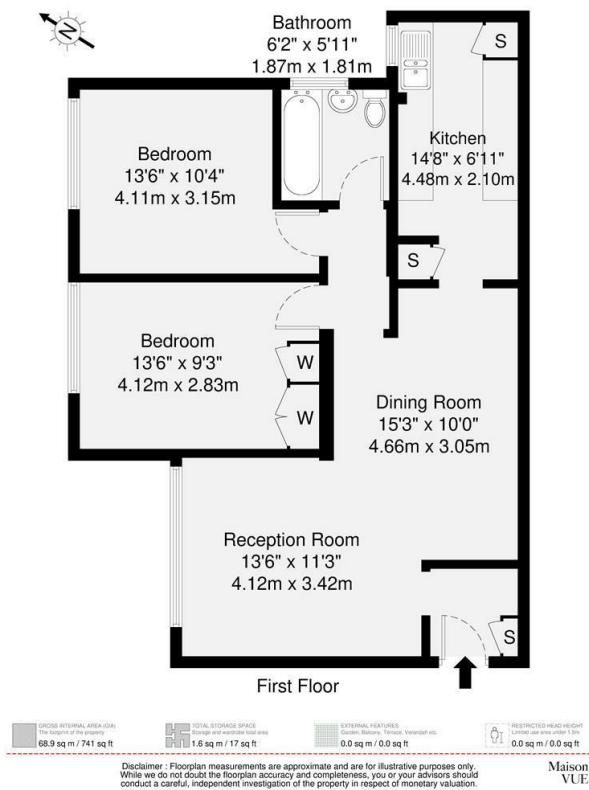
- NEWLY RENOVATED FIRST FLOOR FLAT
- QUIET RESIDENTIAL BLOCK
- COMMUNAL GARDEN
- LOTS OF LOCAL AMENITIES
- EXCELLENT TRANSPORT LINKS
- AVAILABLE NOW

### Viewing

Please contact our OC Homes Gidea Park Office on 01708989888 if you wish to arrange a viewing appointment for this property or require further information.







These particulars, whilst believed to be accurate are set out as a general outline only for guidance and do not constitute any part of an offer or contract. Intending purchasers should not rely on them as statements of representation of fact, but must satisfy themselves by inspection or otherwise as to their accuracy. No person in this firm's employment has the authority to make or give any representation or warranty in respect of the property.