



Hainault Road, Leytonstone, E11 1ER

£1,400 Per Calendar Month



****SPACIOUS ONE BEDROOM FLAT LOCATED A SHORT WALK TO LEYTONSTONE TUBE STATION****

OC Homes are delighted to present to the lettings market, this spacious one-bedroom apartment within a small purpose built block on Hainault Road, Leytonstone. The property is on the second floor and boasts a bright and spacious reception room, good size kitchen, large double bedroom, and three-piece bathroom suite. It is just a 10 minute walk to Leytonstone Tube Station (Central Line) via Fairlop Road.

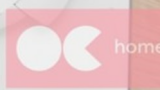
Other benefits include access to a communal garden to the rear of the building and being within close walking distance to a number of local amenities including the shops on Hainault Road and a number of restaurants, cafes and bars on High Road Leyton. The property is larger than the average one-bedroom apartment and is within walking distance to Leytonstone Tube Station (Central Line) and Leyton Midland Overground station, as well as being close to a number of local amenities. To arrange a viewing please contact the OC Homes Lettings team now.

AVAILABLE 21/08/2026

Viewing

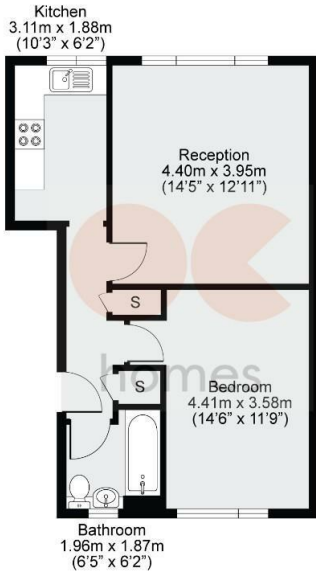
Please contact our OC Homes Leyton Office on 02085561212 if you wish to arrange a viewing appointment for this property or require further information.

- AVAILABLE 21/08/2026
- EXCELLENT TRANSPORT LINKS
- COMMUNAL GARDEN
- WALKING DISTANCE TO LEYTONSTONE TUBE
- CLOSE TO LOCAL AMENITIES
- UNFURNISHED



Hillboro Court, Hainault Road, Leytonstone, London, E11

Approx. Gross Internal Area = 46.4sqm / 499.4sqft



Energy Efficiency Rating	
Current	Potential
Very energy efficient - lower running costs	
(92 plus) A	
(81-91) B	
(69-80) C	
(55-68) D	
(38-54) E	
(21-38) F	33
(1-20) G	
Not energy efficient - higher running costs	
England & Wales	

Environmental Impact (CO ₂) Rating	
Current	Potential
Very environmentally friendly - lower CO ₂ emissions	
(92 plus) A	
(81-91) B	
(69-80) C	
(55-68) D	
(38-54) E	47
(21-38) F	
(1-20) G	
Not environmentally friendly - higher CO ₂ emissions	
England & Wales	



Disclaimer: Floorplan measurements are approximate and are for illustrative purposes only. While we do not doubt the floorplan accuracy and completeness, you or your advisors should conduct a careful, independent investigation of the property in respect of monetary valuation.

Maison VUE



These particulars, whilst believed to be accurate are set out as a general outline only for guidance and do not constitute any part of an offer or contract. Intending purchasers should not rely on them as statements of representation of fact, but must satisfy themselves by inspection or otherwise as to their accuracy. No person in this firm's employment has the authority to make or give any representation or warranty in respect of the property.



320 High Road Leyton, Leyton, London, E10 5PW
t. 02085561212 | e. hello@ochomes.co.uk
w. oneclickhomes.co.uk