



Hare Hall Lane, RM2 6BD

£1,800 Per Month



****STUNNING PERIOD PROPERTY WITH PRIVATE GARDEN – MINUTES FROM GIDEA PARK STATION (ELIZABETH LINE)****

OC Homes is delighted to offer this exceptional two-bedroom ground-floor flat, featuring a private garden and exquisite period details. This distinctive property includes a spacious lounge, a separate dining area, a fitted kitchen, two generously sized double bedrooms, and a four-piece bathroom suite.

Additional benefits include a private garden, perfectly positioned in the sought-after Gidea Park area, with convenient access to local amenities and public transport. Gidea Park Rail Station, a mere 5-minute walk from the property, offers an ideal location for commuters travelling into London.

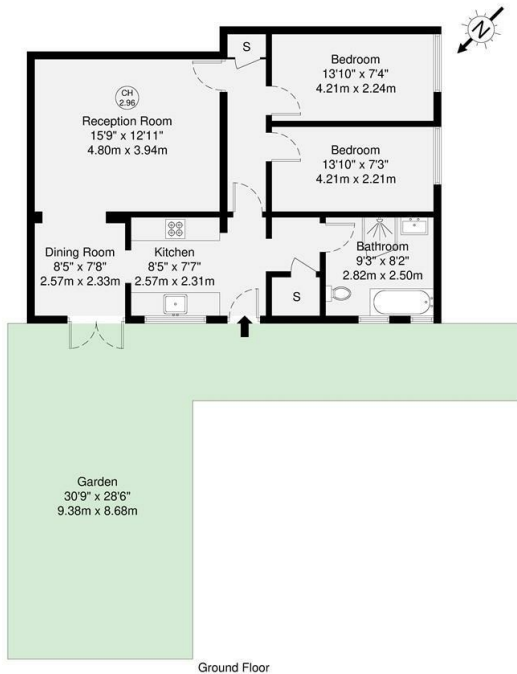
AVAILABLE NOW

Viewing

Please contact our OC Homes Gidea Park Office on 01708989888 if you wish to arrange a viewing appointment for this property or require further information.

- PERIOD FEATURES
- PRIVATE GARDEN
- WALKING DISTANCE TO GIDEA PARK STATION (ELIZABETH LINE)
- GROUND FLOOR
- TWO DOUBLE BEDROOMS
- DINING AREA
- AVAILABLE NOW





GROSS INTERNAL AREA (GIA)
 The total of this property: 72.3 sq m / 778 sq ft

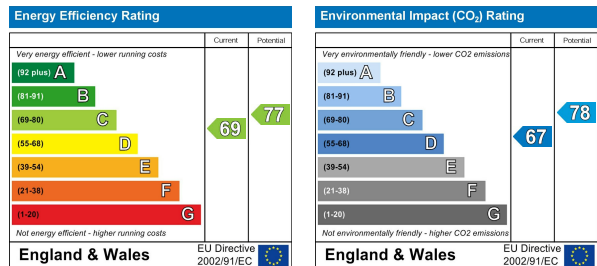
TOTAL STORAGE SPACE
 Storage and wardrobe total area: 1.8 sq m / 19 sq ft

EXTERNAL FEATURES
 Garden, Storage, Terrace, Transoms etc.: 81.4 sq m / 876 sq ft

RESTRICTED HEAD HEIGHT
 Limited on area under 2.0m: 0.0 sq m / 0.0 sq ft

Disclaimer: Floorplan measurements are approximate and are for illustrative purposes only. While we do not doubt the floorplan accuracy and completeness, you or your advisors should conduct a careful, independent investigation of the property in respect of monetary valuation.

Maison VUE



These particulars, whilst believed to be accurate are set out as a general outline only for guidance and do not constitute any part of an offer or contract. Intending purchasers should not rely on them as statements of representation of fact, but must satisfy themselves by inspection or otherwise as to their accuracy. No person in this firm's employment has the authority to make or give any representation or warranty in respect of the property.