



Earsby Street, WEST KENSINGTON, W14 8QW

£1,850 Per Calendar Month



****STUNNING GROUND FLOOR APARTMENT WITHIN SOUGHT AFTER MANSION BLOCK IN WEST KENSINGTON****

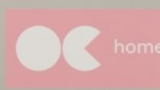
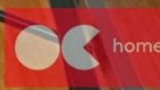
OneClickHomes are delighted to offer to the Lettings market, this ground floor one bedroom apartment in a prime location. The property boasts a bright and spacious reception room, fitted kitchen, double bedroom, bathroom, and separate w/c. The property is within a beautiful brick built period mansion block with communal gardens in an area boasting lots of local amenities. Palace Mansions is a sought after development, benefiting from a resident's concierge service and located just a short walk away from Kensington High Street. Nearby transport links include Kensington Olympia Tube Station (District Line and Overground), West Kensington (District Line) and High Street Kensington (District line and Circle Line) and Baron's Court (Piccadilly Line). To arrange a viewing please call the OneClickHomes Lettings team now.

AVAILABLE NOW!

Viewing

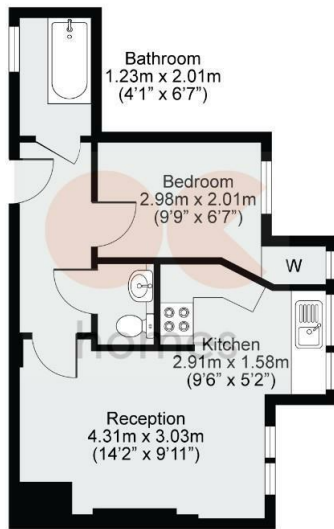
Please contact our OC Homes Leyton Office on 02085561212 if you wish to arrange a viewing appointment for this property or require further information.

- PERIOD MANSION BLOCK
- SOUGHT AFTER LOCATION
- RESIDENT'S CONCIERGE SERVICE
- EXCELLENT TRANSPORT LINKS
- OFF KENSINGTON HIGH STREET
- GROUND FLOOR APARTMENT
- AVAILABLE NOW!



Palace Mansions, Earsby Street, London, W14

Approx. Gross Internal Area = 35.4sqm / 381.0sqft



Ground Floor



Energy Efficiency Rating	
Current	Potential
Very energy efficient - lower running costs	
(92 plus) A	
(81-91) B	
(69-80) C	
(55-68) D	
(39-54) E	
(21-38) F	
(1-20) G	
Not energy efficient - higher running costs	
55	74
England & Wales	
EU Directive 2002/91/EC	

Environmental Impact (CO ₂) Rating	
Current	Potential
Very environmentally friendly - lower CO ₂ emissions	
(92 plus) A	
(81-91) B	
(69-80) C	
(55-68) D	
(39-54) E	
(21-38) F	
(1-20) G	
Not environmentally friendly - higher CO ₂ emissions	
54	74
England & Wales	
EU Directive 2002/91/EC	



Disclaimer: Floorplan measurements are approximate and are for illustrative purposes only. While we do not doubt the floorplan accuracy and completeness, you or your advisors should conduct a careful, independent investigation of the property in respect of monetary valuation.

Maison VUE



These particulars, whilst believed to be accurate are set out as a general outline only for guidance and do not constitute any part of an offer or contract. Intending purchasers should not rely on them as statements of representation of fact, but must satisfy themselves by inspection or otherwise as to their accuracy. No person in this firm's employment has the authority to make or give any representation or warranty in respect of the property.



320 High Road Leyton, Leyton, London, E10 5PW
 t. 02085561212 | e. hello@ochomes.co.uk
 w. oneclickhomes.co.uk