



Lettings.

Kings Gate,
Horsham RH12 1AE

Rent
£1200.00 pcm



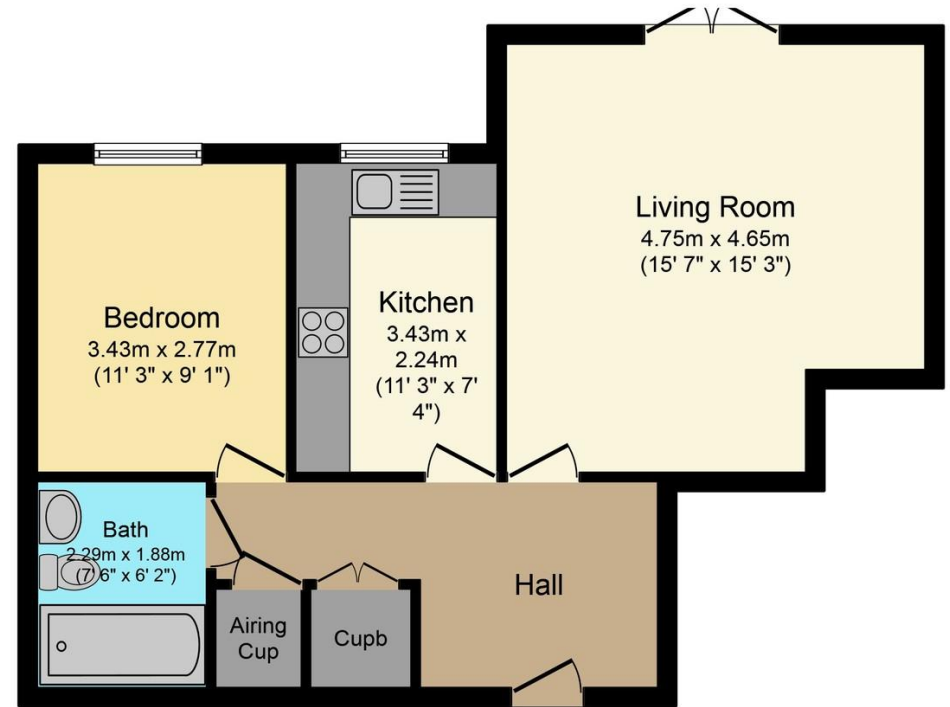
Kings Gate, Horsham RH12 1AE



LOCATION Kings Gate is a gated development in a central town location. The historic town of Horsham has many amenities which include John Lewis and Waitrose store, a variety of restaurants and cafes, the Capitol theatre/cinema, Pavilions leisure centre, Horsham park and many further leisure facility and The Gym. Horsham mainline station is within a short walk which offers great transport links to London Victoria, London Bridge and the South Coast.

THE PROPERTY A modern, stylish and contemporary apartment situated in a popular sought after development. The property briefly comprises; Entrance hall with secure entry system, large living/dining room with French doors opening onto a private balcony, a well appointed kitchen with integrated appliances, a double bedroom with fitted wardrobes and a modern bathroom suite with a shower over the bath. The property is offered to the market on an unfurnished basis, water included in the monthly rent and available for occupation from November 2021.

OUTSIDE Outside there are landscaped communal gardens and an underground car park with parking for one car.



Floor area 54.8 sq. m. (590 sq. ft.) approx

Total floor area 54.8 sq. m. (590 sq. ft.) approx

This plan is for illustration purposes only and may not be representative of the property. Plan not to scale.

Powered by audioagent.com



Buses
mins walk



Shops



Trains
Horsham –
Littlehaven –



Sport & Leisure
Pavilions in the Park
miles



Airport
Gatwick
miles



Schools



Broadband
Up to Mbps



Roads
M23



Council Tax
Band D

Total Approximate Floor Area
590 sq ft / 55 sq m

Viewing arrangements by
appointment through :

Brock Taylor
01403 272002
horshamlettings@brocktaylor.co.uk



Map Location



Brock Taylor Disclaimer: we would like to inform prospective purchasers that these sales particulars have been prepared as a general guide only. A detailed survey has not been carried out, nor the services, appliances and fittings tested. Room sizes should not be relied upon for furnishing purposes and are approximate. If floor plans are included they are for guidance only and illustration purposes only and may not be to scale. If there are any important matters likely to affect your decision to buy, please contact us before viewing this property.

EPC Rating

Score	Energy rating	Current	Potential
92+	A		
81-91	B		
69-80	C	71 c	73 c
55-68	D		
39-54	E		
21-38	F		

Residential sales, lettings,
land and new homes.

01403 272002
brocktaylor.co.uk

2-4 East Street, Horsham, West Sussex, RH12 1HL