

SUNNISIDE

SKEEBY

LOVE PROPERTY.

LOVE THE JOURNEY



Welcome home...

The village of Skeeby has lots to get involved with, including a community-run pub and an active village hall. Despite its peaceful setting, it remains well connected, with a main bus route and easy access to Richmond, Catterick and Darlington.

Arrive through the pretty gated front garden, where a path leads past well-kept planting towards the front door. The stone frontage gives an immediate sense of character, with mature borders and flowers creating a warm welcome.

Inside, the home has a traditional feel, with a spacious living room featuring exposed beams and an open fire, a lovely room for quiet evenings and relaxing weekends. To the rear, the extended kitchen/diner offers a practical everyday space with free-standing appliances including oven, dishwasher, washer/dryer and fridge/freezer, with direct access out towards the garden.



Upstairs...

The main bedroom sits at the front of the house and is a comfortable double room. Two further double bedrooms overlook the rear, one benefitting from fitted wardrobes, giving flexibility for children, guests or home working.

The bathroom includes a bath with an overhead shower, keeping the layout simple and practical for day-to-day living.





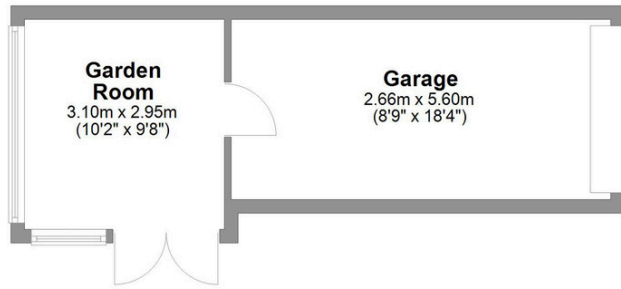
Step Outside...

The garden is a real highlight. From the kitchen/dining area, you step out to a hardstanding area, then onto a walkway passing the rear of the house, with neighbour right of way. You then continue up into the private garden. Arranged across gentle tiers, it offers lawned spaces, stone paths, colourful borders, mature shrubs and established planting.

It is the sort of garden made for quiet mornings, pottering, reading in the sun and enjoying the rhythm of village life. The conservatory at the rear adds another useful space and connects directly to the back of the garage, making it ideal as a home office, creative room or peaceful garden retreat.

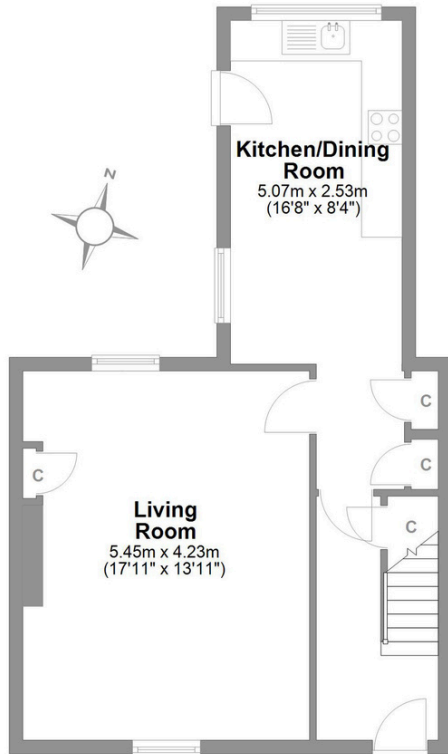






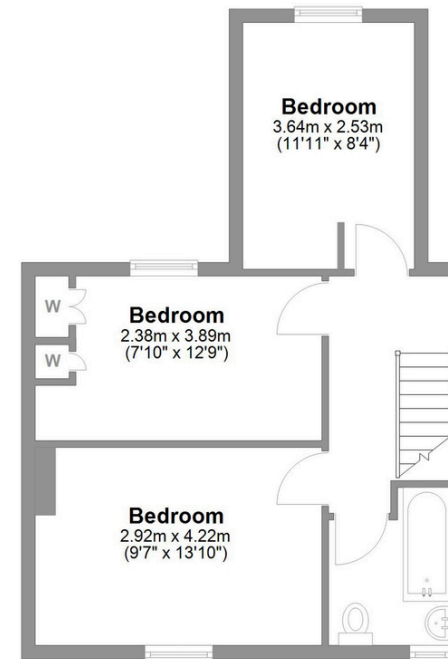
21 Skeeby Skeeby

Total area: approx. 112.6 sq. metres (1212.2 sq. feet)



Ground Floor

Approx. 70.8 sq. metres (762.0 sq. feet)



First Floor

Approx. 41.8 sq. metres (450.2 sq. feet)

LOVE PROPERTY.♥

Whilst every attempt has been made to ensure the accuracy of the floorplans contained here, measurements of doors, windows, rooms and any other items are approximate and no responsibility is taken for any error, omission or mis-statement. This plan is not drawn to scale and is for illustrative purposes only & should be used as such by any prospective purchaser. Created especially for Love Property by Vue3sixty Ltd